

FirePit™

Whalen

DESIGNER SERIES

Assembly Instructions / Owner's Manual
for

Model 41240/41242

FOR CUSTOMER SERVICE

OR

ASSEMBLY ASSISTANCE

CALL 1-800-225-1438

PLEASE DO NOT RETURN TO RETAIL STORE!

!WARNING!

THE FirePit™ IS FOR OUTDOOR USE ONLY!
DO NOT USE THE FirePit™ INDOORS!
INDOOR USE CAN BE FATAL!

WHALEN LIMITED WARRANTY

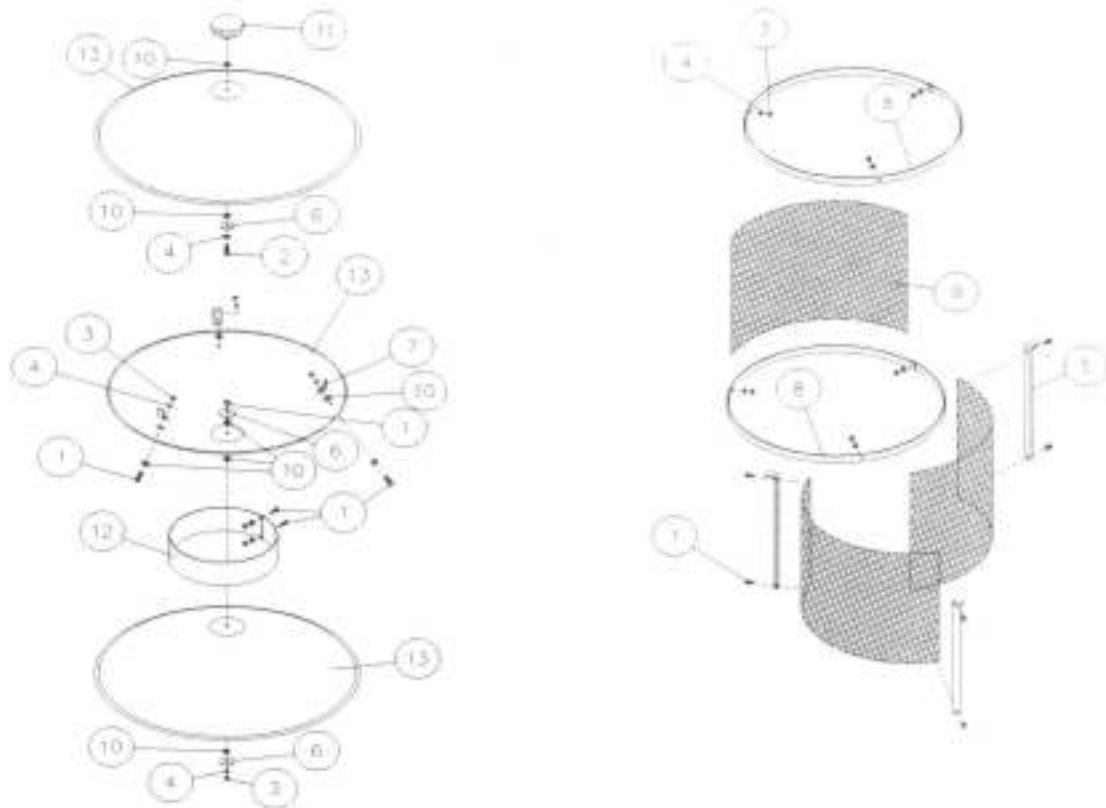
Whalen Mfg. Co., (Whalen) hereby warrants to the ORIGINAL RETAIL PURCHASER of this product that if it is assembled and operated in accordance with Whalen's printed instructions accompanying it, then for a period of five (5) years from the date of purchase all parts of the Whalen **FirePit™**, excluding the screen unit, shall be free from defects in material and workmanship.

Whalen shall not be liable under this or any implied warranty for incidental or consequential damages. This warranty gives you specific legal rights, and you may have other rights which vary from state to state. This warranty is applicable in the USA and Canada. Whalen requires reasonable proof of your date of purchase. **THEREFORE, YOU SHOULD RETAIN YOUR SALES SLIP OR INVOICE.**

This Limited Warranty shall be limited to the repair or replacement of parts which prove defective under normal use and service and which on examination shall indicate, to Whalen's satisfaction, they are defective. Any part that is claimed to be defective and covered by this Limited Warranty must be returned with transportation costs prepaid to Whalen Mfg. Co., Customer Service Center, 1270 E. Murray St, Macomb, IL 61455. If Whalen's inspection confirms the defect and the claim, Whalen will elect to repair or replace such part without charge and return it to you freight or postage prepaid.

Note: All Whalen Mfg. Co products are subject to change, upgrade and improvement without notification.

Exploded Parts Diagram



PARTS LIST FOR 28" FirePit™ DESIGNER SERIES

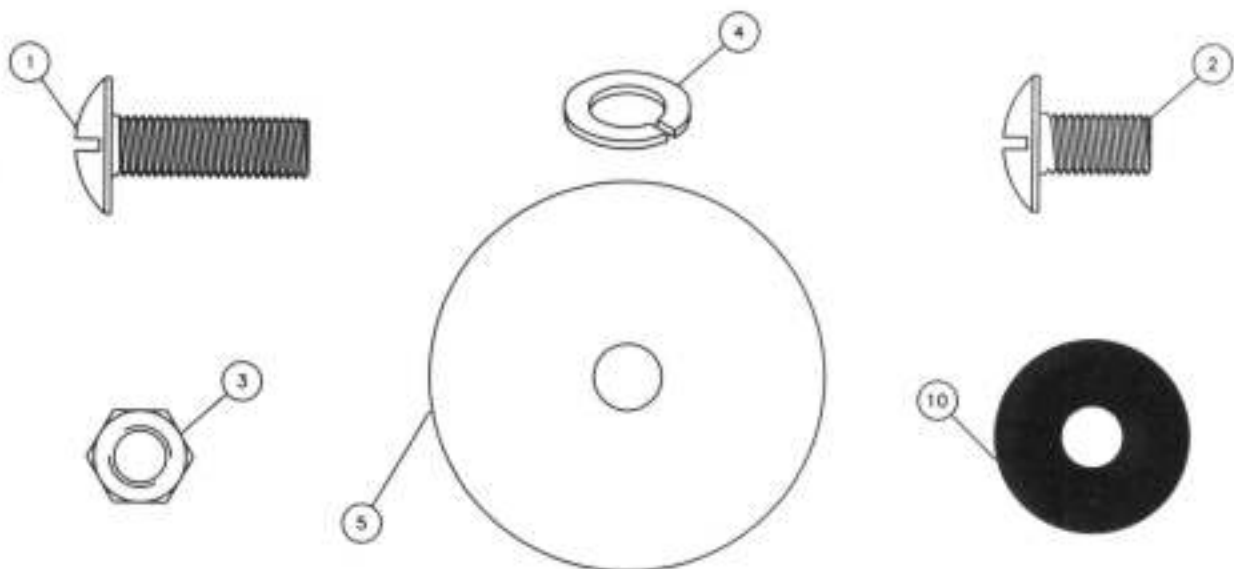
Ref No.	Part No.	Part Description	Quantity
1	2503-102	5/16-18 x 1 Truss Head Bolt	12
2	2503-101	5/16-18 x 1/2 Truss Head Bolt	1
3	2502-201	5/16-18 Hex Nut ZP	12
4	2525-201	5/16 Med Lockwashers	13
5	40310	18" Screen Upright	3
6	40542	5/16 x 2 Fender Washer	3
7	40311	Ring Clip, FirePit™	3
8	40309	Screen Rings, FirePit	2
9	40488	18" Screen, 28" FirePit	3
10	40369	Fiber Washer	11
11	40541	Handle, FirePit™ Designer	1

PARTS LIST FOR 28" FirePit™ DESIGNER SERIES

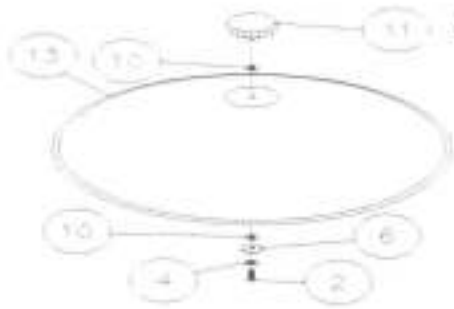
Ref No.	Part No.	Part Description	Quantity
		(MODEL 41240- BLACK)	
12	40535	Support Ring, FirePit™ Designer	1
13	40337	Top / Base, FirePit™ Designer Black	2
14	40338	Bottom, FirePit™ Designer Black	1
		(MODEL 41242- GREEN)	
12	40548	Support Ring, FirePit™ Designer	1
13	40375	Top / Base, FirePit™ Designer Green	2
14	40376	Bottom, FirePit™ Designer Green	1

TOOLS REQUIRED FOR ASSEMBLY

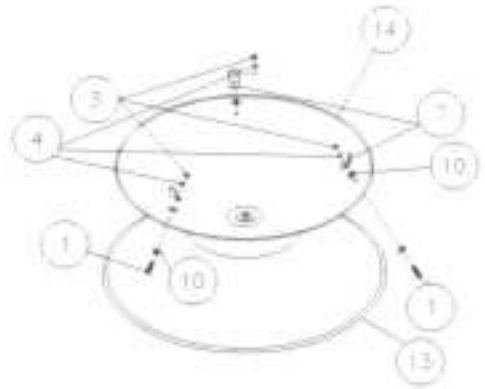
Straight Bit Screwdriver & Adjustable End Wrench *or* Screwdriver & 1/2" Open or Box End Wrench



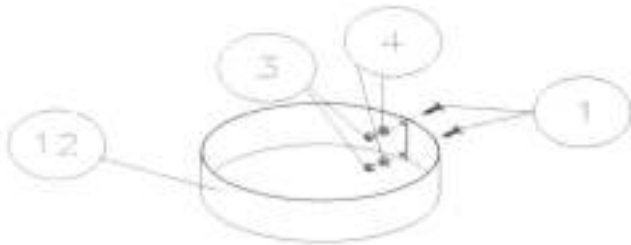
ASSEMBLY INSTRUCTIONS



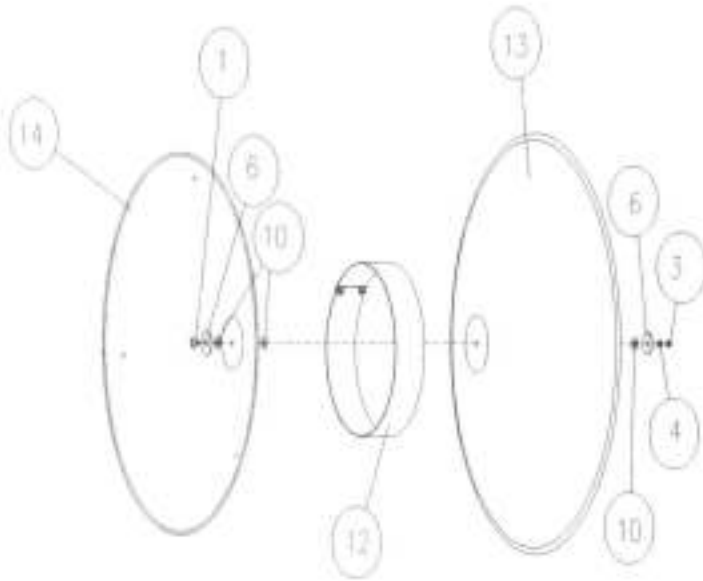
Step 1- Assemble Handle to Lid- Assemble Handle(11) to FirePit Top(13) using 5/16-1/2 bolt(2). Insert from concave side through lockwasher(4), fender washer(6), fiber washer(10) and through center hole in lid. Add another fiber washer(10) and thread into Handle(11). Tighten securely. Do not over tighten! Over-tightening may fracture porcelain. **IMPORTANT!** Only fiber washers(10) should contact porcelain!



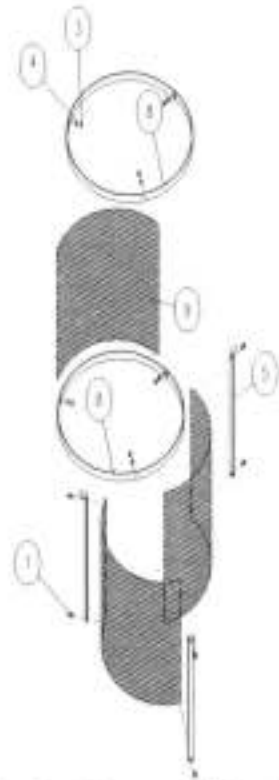
Step 4- Attach Ring Clips to FirePit Bowl- Place fiberwasher(10) onto 5/16 bolt(1). Insert 5/16 bolt(1) through FirePit Bottom bowl(14) *from the outside*. Place fiber-washer(10) onto bolt. Follow this with a Ring Clip(7) and a lockwasher(4). Secure with a hex nut(3). Hold end of Ring Clip(7) straight up and finish tighten. Repeat for all Ring Clips.



Step 2- Assemble FirePit Support Ring- Assemble Support Ring(12) into a circle by placing a 5/16 bolt(1) through each of the overlapped holes in the end. Secure using a 5/16 lockwasher (4) and 5/16 nut(3). Finish tighten. Work into a circular shape with gentle pressure.



Step 3- Assemble Base Bowl to FirePit Bottom- Note! This step is much easier with two people. Place fender washer(6), then fiber washer(10) onto 5/16 bolt(1). Insert bolt with washers through center hole of FirePit Bottom(14). Place fiber washer(10) onto 5/16 bolt(1). Trap Support Ring(12) between FirePit Bottom(14) and Base Bowl(13) and guide this bolt through the center hole in Base Bowl(13). Follow this with a fiber washer(10), a fender washer(6) and a lockwasher(4). Thread on a 5/16 hex nut(3) and finger tighten. Adjust Support Ring(12) between FirePit Bottom and Base Bowl so that the Support Ring (12) is approximately centered. Snug down the nut until you feel gentle resistance. Set the Base Bowl(13) onto flat surface with the FirePit Bottom(14) facing up. Place your hands on either side of the FirePit Bottom and rock gently from side to side until edge of bowl is level. Place both bowls on edge taking care not to change alignment. Finish tighten at this time. Do not over tighten! When tightened correctly the FirePit Bottom Bowl(14) should not rock on the Base Bowl(13).



Step 6- Screen Unit Assembly- Begin by temporarily inserting a 5/16 bolt(1) through hole in end of Screen Ring(8). Overlap with opposite end and push bolt through hole. Loosely secure with 5/16 hex nut(3). Repeat with other Screen Ring(8).

CAUTION! - Wear work gloves whenever handling screens!

Place all three Screens(9) over your knee and gently bend downward several times to pre-curve screens. Use a 5/16 bolt(1) to go through the top hole in the Screen Upright(5) just below the angle. Place this bolt through the corner diamond of one Screen (9). Overlap one row of screen diamonds from top to bottom and insert bolt through the uppermost diamond of this Screen(9) as well. Place the bolt through a hole in one Screen Ring(8). Secure with 5/16 lock washer(4) and 5/16 hex nut(3). Finger tighten. Insert 5/16 bolt(1) through hole at bottom of same Screen Upright(5). Place bolt(1) through corner diamond of Screen(9), through second Screen(9) and through hole in lower screen Ring(8). Repeat process with second Screen Upright(5) and finish with third Screen Upright where Screen Rings overlap. Remove temporary bolt and insert through Screen Upright(5), Screens(9) and Screen Ring(8). When all bolts are in place, set bottom of screen unit onto floor and finish tighten.

WHALEN

FirePit™ • Lawn & Turf
1270 E. Murray ST
Macomb, IL 61455
1.800.225.1438



WHALEN

FirePit™ • Lawn & Turf
1270 E. Murray ST
Macomb, IL 61455
1.800.225.1438

Step 6- Assemble Screen unit, FirePit and Top Cover- Install screen unit on FirePit by placing unit over all three Ring Clips(7) with short right angle bends to the top. Place FirePit Top(13) over screen unit assembly to complete.

!IMPORTANT!

BEFORE USING, FILL BOTTOM BOWL WITH AT LEAST 25 POUNDS OF CLEAN SAND TO INSULATE BOTTOM AND SUPPORT SURFACE FROM HEAT AND FLAME!
LEAVE SAND IN AT ALL TIMES!

!WARNING!

FirePit™ is for outdoor use only. Keep **FirePit™** away from homes, garages and flammable materials/fluids or vehicles while in use. **FirePit™** is not to be used by children. Be sure screens are in place while in use. Do not use in windy conditions. Use caution when using on combustible surfaces and avoid wearing flammable clothing while **FirePit™** is in use. Always extinguish with lid only and remember ashes can remain hot for long periods. Do not overload or use to burn leaves, trash or paper. Use caution and mitts whenever handling or moving. Handles can be hot! When in use, surfaces will be hot. All fires must be completely extinguished before retiring. Do not store hot or with ashes inside. See below for further safety information.

IMPORTANT RULES FOR SAFE OPERATION

- 1 Keep away from flammable material and fluids such as gasoline, alcohol, diesel fuel, kerosene, and charcoal lighter fluid or vehicles while in use.
- 2 Do not use flammable fluids such as gasoline, alcohol, diesel fuel, kerosene or charcoal lighter fluid to light or relight fires.
- 3 Exercise the same precautions you would with an open fire.
- 4 Do not allow children to use **FirePit™**. Keep children and pets away from **FirePit™**.
- 5 Do not wear flammable or loose fitting clothing such as nylon when using **FirePit™**.
- 6 Do not burn trash, leaves, paper, cardboard or plywood in **FirePit™**. Avoid using soft woods such as pine or cedar that are likely to "pop" and throw sparks. Use of seasoned hardwood is suggested.
- 7 Before starting the fire make sure that the lid will still close to extinguish the fire in case of emergency. Do not overload **FirePit™** to the point that the lid will not close.
- 8 Always extinguish the fire with the **FirePit™** lid. Do not use water to douse the the fire as this will fracture the porcelain finish. **FirePit™** and ashes inside will remain hot for some time. Always leave the lid in place until **FirePit™** is cold.
- 9 Do not store **FirePit™** with ashes or combustible materials inside. Do not store **FirePit™** until the fire is completely out and all surfaces are cold.
- 10 Use fireplace mitts/gloves to handle **FirePit™** and tend the fire. Use long handled, sturdy fireplace equipment when adding or moving logs.
- 11 Do not move **FirePit™** while in use. If it becomes necessary to move **FirePit™**, remove the screened section and replace **FirePit™** lid before attempting to move **FirePit™**.
- 12 Before using **FirePit™**, fill the bottom bowl with approximately 25 pounds of sand to to help insulate the bottom and support surfaces from heat. Leave sand in **FirePit™** at all times.
- 13 Always use in accordance with all applicable local and national fire codes.
- 14 Use only on noncombustible surfaces such as concrete, brick, rock, etc. Do not use on a wooden deck *unless* screens are in place and **FirePit™** is under constant supervision. Do not leave unattended at any time.
- 15 Keep all bolts, nuts and screws tight to be sure **FirePit™** is in safe working condition. Inspect on a routine basis to ensure that **FirePit™** is operating reliably.

THANK YOU FOR PURCHASING THIS WHALEN MFG. CO. PRODUCT!

Questions? Comments? Concerns? Please Call 1-800-225-1438