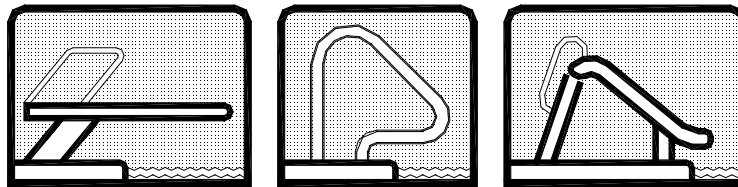


# THE ROGUE™ FUNSLIDE™

## SLIDE OWNER'S MANUAL

# S.R. Smith, LLC



### **\*\* CAUTION \*\***

S.R. SMITH ROGUE™ FUNSLIDES™ ARE MANUFACTURED FOR INSTALLATION AND USE ON RESIDENTIAL INGROUND POOLS ONLY. ROGUE™ FUNSLIDES™ ARE NEVER TO BE INSTALLED AND USED ON PUBLIC INGROUND POOLS, ABOVEGROUND POOLS, ONGROUND POOLS, HOUSEBOATS, BOAT DOCKS, FLOATING DOCKS OR PLATFORMS

CORPORATE HEADQUARTERS  
WESTERN SALES AND MANUFACTURING PLANT  
P.O. Box 400 • 1017 SW Berg Parkway  
Canby, Oregon 97013  
(503) 266-2231 • (503) 266-4334

## **Table of Contents**

<b><u>Topic</u></b>	<b><u>Page #</u></b>
Introduction.....	2
Applicable Standards and Codes.....	2
Installation.....	2
Drawings.....	2
Subsequent Owners.....	2
Manufacturer's Placement Instructions.....	3
Installed Slide's Structural & Installation Checklist.....	5
Intended Use Instructions.....	5
Sitting Slide Position.....	6
Do Not Slide Head First.....	7
Daily/Weekly Maintenance Of Slide.....	7
Cleaning Instructions.....	8

## **INTRODUCTION**

S.R. Smith Rogue™ FunSlides™ are manufactured for installation and use on residential inground swimming pools only. S.R. Smith Rogue™ FunSlides™ are NEVER to be installed and used on public inground pools, aboveground pools, onground pools, houseboats, boat docks, floating docks or platforms.

## **APPLICABLE STANDARDS AND CODES**

1. All S.R. Smith Rogue™ FunSlides™ are manufactured in accordance with Consumer Products Safety Commission STANDARD FOR SWIMMING POOL SLIDES, 16 CFR Ch. 11 Part 1207 (latest edition).
2. Installer must comply with all applicable governmental and building codes.

## **ASSEMBLY AND INSTALLATION**

All S.R. Smith Rogue FunSlides™ are inspected prior to shipment from the factory. Proper assembly and installation is mandatory. Improper assembly and installation voids S.R. Smith's warranty and may affect the safety of the user. S.R. Smith cannot and does not guarantee customer's concrete deck.

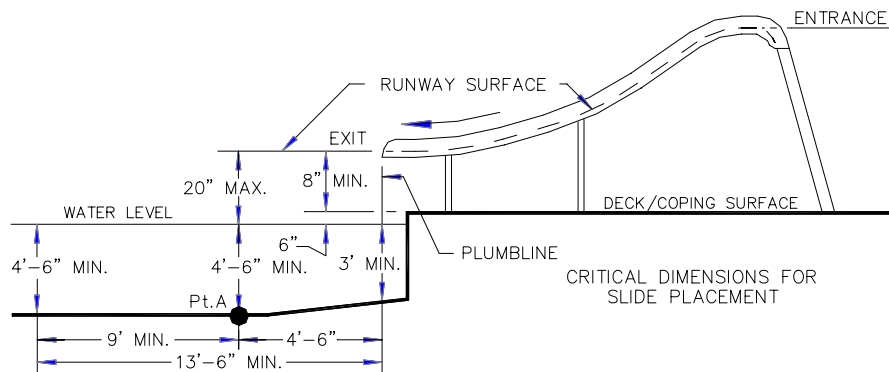
## **DRAWINGS**

All drawings in this Slide Owner's Manual (FIGURES I through O) are for illustration purposes only and are NOT TO SCALE.

# MANUFACTURER'S PLACEMENT INSTRUCTIONS

The Rogue™ FunSlide™ owner must confirm that the Manufacturer's Placement Instructions have been followed by the Installer.

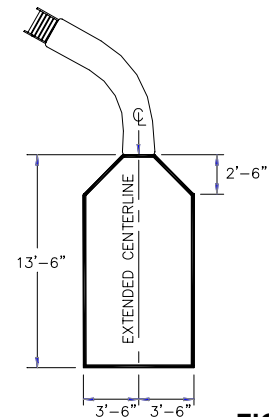
1. The critical dimensions for placement of the slide are as shown in FIGURES I and J.
  - A. The slide exit runway surface shall not exceed twenty inches (20") above the water surface and not less than eight inches (8") above the deck/coping surface (see Figure I).
  - B. The slide shall be positioned so that all water flowing off the runway exit drops into the pool.
  - C. The minimum depth of water below the exit lip of the slide shall be three feet (3') and increases to four feet six inches (4'-6") at Pt.A which is a distance of four feet six inches (4'-6") from the exit lip of the slide. (see Figure I).
  - D. A minimum depth of four feet six inches (4'-6") shall be maintained at a distance of nine feet (9') along the extended centerline of the slide from Pt.A. (see FIGURE I).



**FIGURE I**

2. A minimum clearance area in front of the slide shall be maintained away from the coping, another slide, a diving board or a rope and float line. (see FIGURE L)

- A. The minimum clearance distance on either side of the extended centerline of the slide runway shall not be less than three feet six inches (3'-6") at a point no less than two feet six inches (2'-6") from the exit of the slide and extending a distance of thirteen feet six inches (13'-6") in front of the slide. (see FIGURE J)



**FIGURE J**

- B. The minimum clearance area in front of a diving board is a minimum distance of three feet six inches (3'-6") on either side of the board's centerline. Pt.C

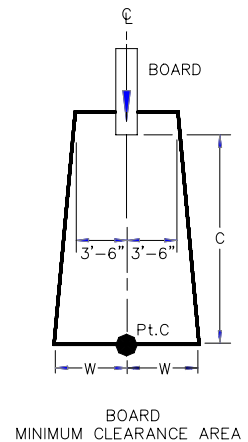
extends a minimum distance of “C” from the tip end of the board. The width distance “W” on either side of Pt.C is given in CHART 1 and shown in FIGURE K.

**CHART 1**

BOARD MINIMUM CLEARANCE AREA		
TYPE	“C” DIMENSION	“W” DIMENSION
I	14'-6"	5'-0"
II	14'-6"	6'-0"
III	16'-6"	6'-0"
IV	18'-6"	7'-6"
V	21'-0"	7'-6"

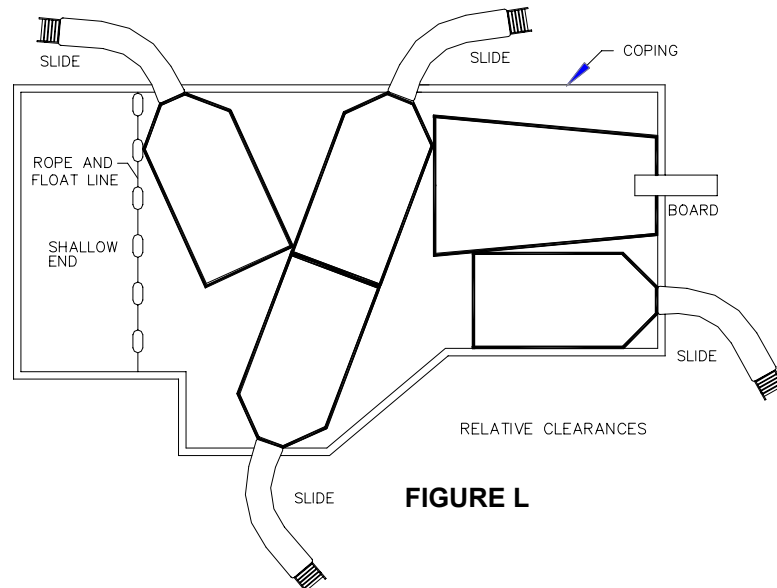
See ANSI/NSPI-5 1995 STANDARD FOR RESIDENTIAL INGROUND SWIMMING POOLS Article 5.8 Drawings and Diagrams of Type I-V Diving Equipment Pools.

“C” DIMENSION FOR BOARD = AB + BC  
 “W” DIMENSION FOR BOARD = WIDTH AT PT.C



**FIGURE K**

- C. The minimum clearance area of a slide or diving board shall not intersect any coping or rope and float line. (see FIGURE L) The minimum clearance area of a slide or diving board may intersect each other provided that they are not used simultaneously.



## **INSTALLED SLIDES' STRUCTURAL & INSTALLATION CHECKLIST**

After installation and prior to the first use of the Rogue™ Funslide™ and periodically thereafter the owner must:

1. Inspect the runway for visible cracks or tears.
2. Inspect the slide for sharp edges, protrusions, cracks or tears.
3. Inspect all attachment flanges for loose or corroded fasteners.
4. Inspect all ladder tread or step-attachment points for evidence of shear, bending yield, or fatigue in the ladder steps, rails, or attachments means. Yield is evidenced by crystallization or fine cracking of the ladder tread and/or surface.
5. Inspect the ladder handrails for rigidity and attachment. (Can they be pulled out of their sockets?)
6. Measure the following dimensions and compare with the Manufacturer's Placement Instructions on pages 3 and 4.
  - Measure the depth of water in front of the slide exit. (4-1/2' min. depth 4-1/2' from exit end of slide.)
  - Measure the height of the slide runway exit above the water. (20" max.)
  - Measure the distance between the slide centerline and the edge of other pool equipment.
7. Observe the position of the exit of the slide as shown in FIGURES J, K and L on pages 3 and 4.

## **INTENDED USE INSTRUCTIONS**

**\*\* IMPORTANT \*\***

**READ AND FOLLOW THE SIMPLE SAFETY RULES BELOW.**

**MAKE SURE THAT EVERYONE WHO USES THE ROGUE™ FUNSLIDE™ KNOWS AND FOLLOWS THESE RULES.**

**ENFORCE THESE RULES WITH ADULT SUPERVISION**

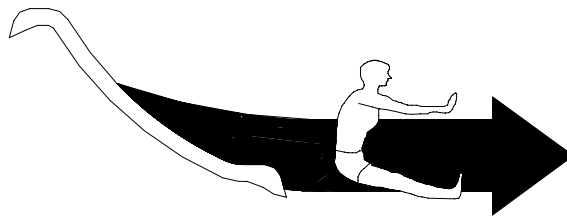
Installed and used properly, the Rogue™ FunSlide™ will give you, your family, friends and guests many hours of enjoyment. Like any other piece of equipment however, the Rogue™ FunSlide™ can be misused in such a way as to cause the user injury, even serious and crippling injury. As the owner of a Rogue™ FunSlide™ it is your responsibility to do the following:

1. Only one person allowed on the slide at any given time.
2. Roughhousing or horseplay on the slide is strictly forbidden.
3. Do not use the slide as a diving platform. The slide is made for sliding only, not diving.
4. Before sliding, always be sure that the water lubrication is turned on.

5. Familiarize yourself with the shape of the pool bottom and the water depth before you slide. Use the correct slide configuration shown on the ladder when sliding.
6. Avoid sliding until all submerged obstacles, surface objects or other swimmers are clear of the slider's pathway.
7. Don't slide at or through objects such as inner tubes, as they force the slider deeper increasing the potential of a crippling injury.
8. Don't drink alcoholic beverages and slide.
9. Don't slide alone; use the buddy system.
10. The slide is a deep water slide and should be installed only according to the instructions on pages 3 and 4 of this manual. Don't allow children to use the slide without adequate supervision. Users must be swimmers.
11. Take your time in preparing to slide. Move forward slowly and get yourself positioned properly before starting the slide.
12. Handicapped persons should use caution and may require supervision.
13. Do not use the slide if any part of it becomes damaged, weakened, or broken. Don't take chances. Have the slide inspected and, if necessary, repaired by a competent professional, who is familiar with acrylic water slides before using the Rogue™ water slide again. See INSTALLED SLIDES' STRUCTURAL & INSTALLATION CHECKLIST on page 5.
14. Individuals who exhibit frailty due to age should not use the slide.
15. People with history of back problems, heart conditions or fear of heights should not use the slide.
16. People who weigh over 250 pounds should not use the slide.
17. Women who are pregnant should not use the slide.
18. Don't use any other sliding technique, other than the following:

### **SITTING SLIDE POSITION**

In sitting slides, face forward on the slide holding the legs and arms straight out with the palms of your hands tilted upward. (see FIGURE M).



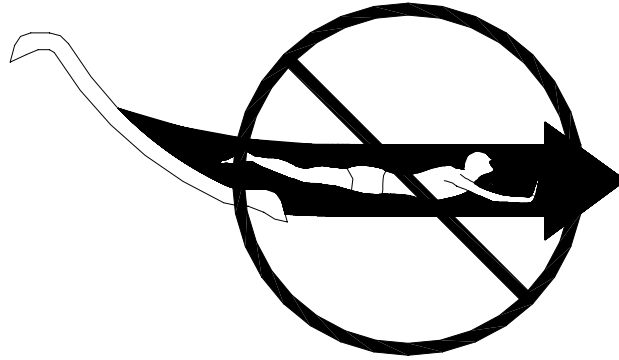
**FIGURE M**

#### **\*\* IMPORTANT \*\***

In order for a person to minimize the possibility of injury, **HEAD FIRST SLIDES ARE STRICTLY PROHIBITED**. (see FIGURE N below). It is necessary that the user know that the chief danger of this type of slide is serious spinal injury. Injuries to the spine may result in temporary or permanent paralysis or even death. Research studies have shown that you cannot rely on the water to slow you down sufficiently to avoid injury.

As a Rogue™ FunSlide™ owner, it is your responsibility to explain the nature of this danger to all persons who may use your Rogue™ FunSlide™, since they may not otherwise appreciate the dangers of performing head first slides.

FIGURE N

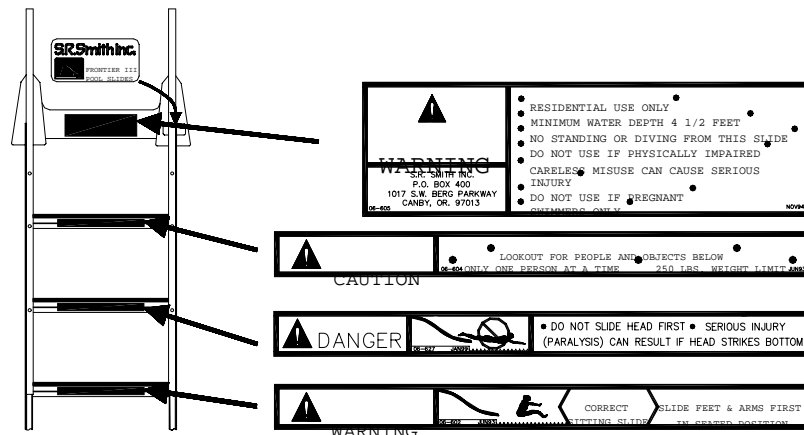


DO NOT SLIDE HEAD FIRST

### DAILY/WEEKLY MAINTENANCE OF THE ROGUE™ FUNSLIDE™

1. When hosing down the deck, hose your Rogue™ FunSlide™ to wash away any dust, dirt or other debris, which may have accumulated.
2. Be sure that water fittings are not leaking, and clean spray nozzles periodically to permit water to be sprayed on the slide runway.
3. All anodized aluminum parts require little maintenance. Hose and wipe to clean.
4. While cleaning aluminum parts, check and see that all nuts and bolts are tight and secure.
5. The INTENDED USE LABELS shall be maintained on the ladder and the transom of the slide entrance as indicated to the right. If they become faded or un readable they should be replaced. Additional labels are available from S.R. Smith upon request. (see FIGURE O).

FIGURE O



## **CLEANING INSTRUCTIONS**

Use Nonabrasive soap and water when possible. In addition, you may safely use:

Windex® With Ammonia  
Spiffits Bath  
Spic and Span® Powder  
Clorox® Bleach

Formula 409®  
Scrubfree  
Calgon® Bath  
Glass Plus®

Fantastik®  
Tackle®  
Topjob®  
Tilex®

Always read the label instructions on any cleaner carefully before applying it to a *Plexiglas® DR®* acrylic surface.

### **AVOID HARSH CHEMICALS AND DISINFECTANTS. DO NOT USE:**

Dow with Scrubbing Bubbles®  
Windex® With Vinegar  
White Cap®

Lysol® Disinfectant  
White Cap®  
Soft Scrub®

Ajax® Cleanser  
Ajax® Liquid