

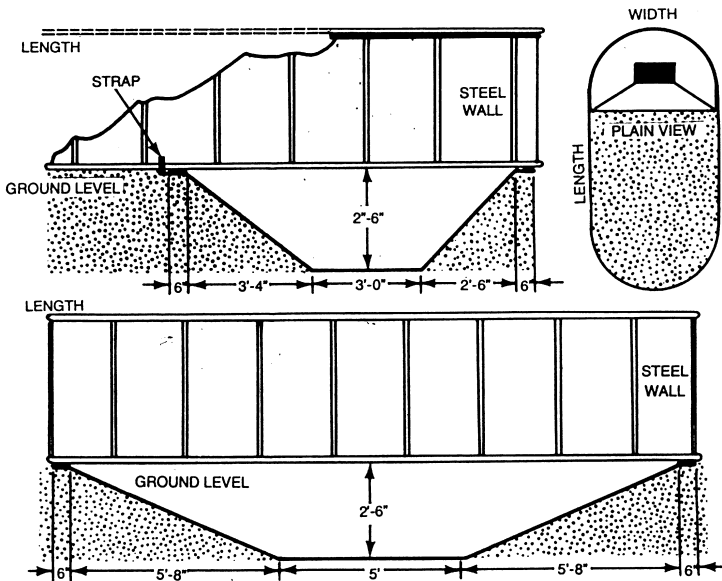
WIL-BAR INTERNATIONAL

INSTRUCTIONS: FOR INSTALLING LINER WITH DEEP SWIMMING AREA FOR OVAL POOLS

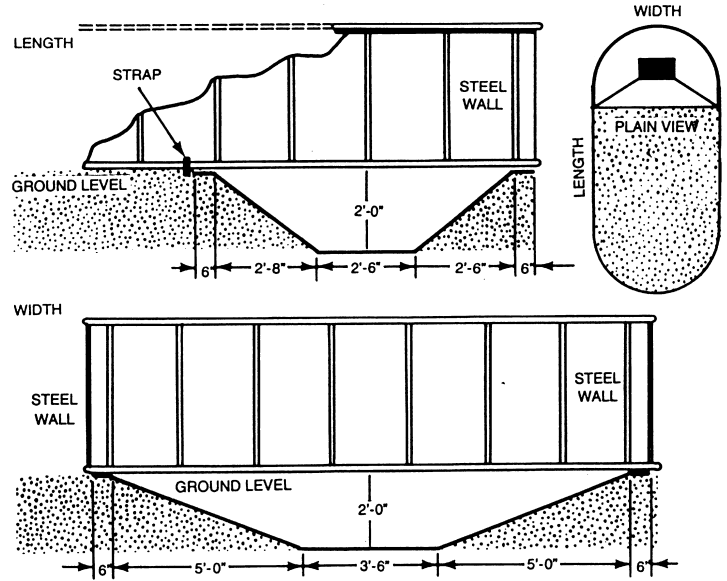
Wil-Bar International has supplied you with this deep swimming area liner to further enhance your enjoyment of its products. This area has not been designed to be a diving area, and its use for diving or jumping can lead to physical injury.

DO NOT DIVE OR JUMP INTO YOUR POOL

1. Complete all steps in the instructions until reference is made to install liner. Do not install liner, but continue to set up pool as per instructions. Entire frame and metal wall should be installed before starting on these instructions.
 2. Excavate the deep swimming area according to dimensions shown in diagram of your pool size. The 6" area along the circumference of the pool has been allotted for the earth covering that is required. Protect the entire area with sifted earth. Dampen and tamp earth to prevent shifting and to remove footprints.
 3. Unroll the liner in the pool. Initially, the seam of the liner at the circumference should be resting on the cove. The wall of the liner should be positioned over the top rails and secured with a piece of rope. Using excess liner material from the entire circumference, drop liner into excavated area.
 4. Start the water, and as you fill the excavated area, smooth away as may wrinkles as possible. Since the liner is not custom fitted to the excavation, there will be some wrinkles.
 5. When the water has reached a level above the cove, remove top rails and secure liner to the top of the metal wall as described in the instructions. A professional installation may be realized by smoothing out the wrinkles in the wall, and doubling over the excess material over the wall before attaching the blue coping. Replace top rails as you work around the pool.
- You are supplied with decals to be placed on the pool. The positioning of these decals is self-explanatory except that the decal "no diving-jumping" is best affixed on the vinyl liner above water level and below the top rail.



1833 AND 1838 OVAL



1525 AND 1530 OVAL

