


[Making Backyards Fun Again](#) [Search Our Site](#)
**888-352-7582**
[Proceed to  
Check-Out](#)

[Home](#) | [Above Ground Pools](#) | [Inground Pools](#) | [On Ground Pools](#) | [Backyard & Patio](#) | [Worldwide Export](#) | [Product Manuals](#)
[Browse the Catalog](#)
[Customer Reviews](#) | [Press Release](#) | [About Pro Pools](#) | [Legal Stuff](#) | [Reference Guide](#)
**Call 888-352-7582**
[Above Ground Pools](#) | [In Ground Pools](#) | [On Ground Pools](#) | [Blog](#) | [Chat](#)

## Solar Pool Heaters - Above Ground Pools


[Click Image to Enlarge](#)

Make your pool a Smartpool with a Solar Pool Heater from Propools. These Solar Pool Heaters are Simple Do-It-Yourself Installations that utilize your existing pool pump. Solar Pool Heaters provide the same result as gas or electric heaters but without the expense. Solar Pool Heaters require no fuel or electricity. No expensive installation of equipment and connections. A SunHeater solar pool heater heating system will raise the temperature of your pool water by up to 10 F (6 C). or more. It is a lightweight, durable and easy to install solar pool heater. Water simply flows through the SunHeater's many tubes via your existing above ground pool pump where it is heated by the sun and returned to the above ground pool. The solar pool heater system can be installed on the roof of your house, shed or cabana, mounted to a rack, or simply placed on the ground. Get the solar pool heaters used by hundreds of thousands of Americans, the SunHeater solar pool heaters, and save money on fuel and electricity bills, extend your swimming season by weeks, and get more enjoyment from your above ground pool than ever before. Solar Pool Heater Systems are available to suit all sizes of aboveground and inground pools.

| Product No. | Mfg. No | Description  | Pro Pools Price Freight Included          |
|-------------|---------|--|---|
| 2211        | 18006   | 2' x 20' Above Ground Solar Heating Panel (40 Sq. Ft.) ( <a href="#">details</a> ) | \$ 167.58 ... <a href="#">Add to Cart</a> |
| 2209        | S421    | 4' x 20' Above Ground Solar Heating Panel (80 Sq. Ft.) ( <a href="#">details</a> ) | \$ 282.06 ... <a href="#">Add to Cart</a> |

|      |       |   |   |
|------|-------|---|---|
| 2294 | S425P | 4' x 20' Above Ground Solar Heating Panel - <b>Complete</b> , Your Best Buy  <a href="#">(details)</a> | \$ 313.97 ... <a href="#">Add to Cart</a> |
| 2213 | SK34  | High-Wind Roof Rack Mounting Kit for Above Ground Pool Solar Panels (In Addition to Regular Mounting Kit) <a href="#">(details)</a>   | \$ 26.04 ... <a href="#">Add to Cart</a>  |
| 2212 | SK43  | Roof Rack Mounting Kit for Above Ground Pool Solar Panels <a href="#">(details)</a>   | \$ 46.87 ... <a href="#">Add to Cart</a>  |
| 2210 | 60635 | Solar Diverter Valve Kit for Swimming Pool Solar Heating Panel; required for multiple solar panels <a href="#">(details)</a>  | \$ 47.23 ... <a href="#">Add to Cart</a>  |

**Got Questions? Call**

**888-352-7582**



# SUNHEATER

SWIMMING POOL SOLAR HEATING SYSTEMS

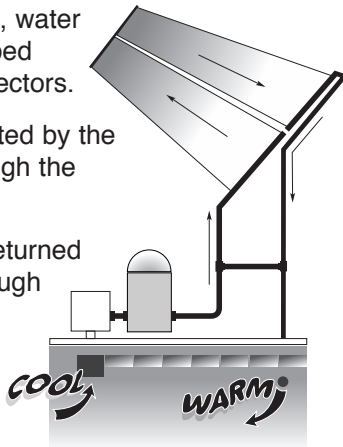
for Aboveground Pools

Product Number S425

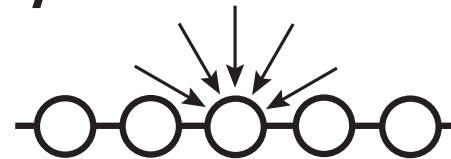
## INSTALLATION & OPERATION MANUAL

### How Solar Pool Heating Works

- Using your pool pump, water is automatically pumped through the solar collectors.
- The water is then heated by the sun as it moves through the collectors.
- The heated water is returned back to the pool, through your return lines.
- You enjoy your own heated pool with no fuel costs.



### Why Solar Heat Works Best



Collector Cross Section

- Water is heated as it moves through the many tubes in the solar collectors.
- Tube and web design traps heat and catches light as the sun moves across the sky.
- Tough polypropylene material won't rust, corrode or scale. Plus, the collector is reversible.

**PLEASE READ THIS MANUAL CAREFULLY. YOUR ENJOYMENT OF YOUR SOLAR HEATED POOL AND YOUR WARRANTY ARE AFFECTED BY HOW YOUR SOLAR HEATING SYSTEM IS INSTALLED**

**CAUTION:** a) Solar collectors are often installed on the roofs of buildings. Unless you are very familiar with working on roofs and have the proper ladders and safety equipment for such work, you should hire someone with the necessary experience to do the installation. Failure to observe safe practices on a roof or other elevated structure may result in falling, leading to serious injury to you.

b) When installing collectors on the ground, do not build a rack support that could allow children access into the pool.

# IMPORTANT READ THIS ENTIRE MANUAL BEFORE STARTING

## How Well Does Solar Heating Work?

A properly sized and installed system will raise pool temperatures up to 10°F (6 °C) during the season. You will only want to circulate water through the solar collector when the sun is shining. When it's cloudy or rainy, solar won't work as well (and you probably won't be swimming during those times), but your water will be back up to temperature after one or two warm days.

## Do I Need A Special Pump?

If your pool pump is in good working condition, there shouldn't be any problem using your existing pump. A one HP pump will handle installations up to 30 ft. (9 m) away from the pool equipment and one story up. If the collectors are cool to touch when the water is running through them on a warm sunny day, you are getting enough flow.

## Where Can I Put The Solar Collectors?

Anywhere you get at least 6 hours of full sun during the day. The longer the collectors are in full sun, the better they will work. If you are mounting the solar on an angle (like a roof or rack), the collectors should face in a southerly direction. For roof or rack mounting, you'll need one SK-43 mounting kit for each solar box. For high wind areas, we recommend one SK-34 High Wind Kit for each collector. Call SmartPool at 1-732-730-9880 for ordering info.

## What Tools Will I Need?

- Flat head screwdriver or 5/16" (8 mm) nut driver
- For roof or rack mounting you will also need:
- Power drill
- 1/8" (3 mm) drill bit and a Phillips head bit
- Silicone sealant (GEI or equivalent)

## What additional parts will I need to install the solar system on a roof?

- One SmartPool Mounting Kit SK-43 for each solar box. One High wind kit SK-34 for each collector in high wind areas.
- You will need the correct amount of 1 1/2" (3.81 cm) Schedule 40 PVC pipe for the plumbing, going to and from your pool equipment.
- You will also need PVC primer, glue, and fittings (available where you buy PVC pipe).

## What additional parts will I need to install the solar system on the ground or on a rack?

- For a ground mount installation everything you need is included if you are installing within 6 feet (2 m) of pool equipment.
- For a rack mount installation you'll need SmartPool's mounting kit SK-43. For high wind areas you will need one SK-34 for each collector.

**Use only SmartPool-approved mounting kit SK43 and follow the directions provided.  
Failure to comply will void your warranty.**

**WARNING! POSITION THE RACK SO THAT IT DOES NOT  
PROVIDE ACCESS TO THE POOL FOR CHILDREN.**

## How much will the solar system weigh when filled with water?

Each solar box (2 Collectors) will weigh approximately 80 lbs. (36 kg) when filled with water. There is very little additional load on your roof since the weight is dispersed over a large area.

Order Guide for S425

| Pool Sizes                |  | Number of<br>Solar Boxes | Area<br>Needed               |
|---------------------------|--|--------------------------|------------------------------|
| Round                     | Oval   |                          |                              |
| 12' - 24' (3.7 m - 7.3 m) | 12' x 24' (3.7 m x 7.3 m)                              | 1                        | 5 ft x 21 ft (1.5 m x 6.5 m) |
| 27' - 28' (4.9 m - 9.8 m) | 16' x 32' (4.9 m x 9.8 m) - 18' x 34' (5.5 m x 10.4 m) | 2                        | 10 ft x 21 ft (3 m x 6.5 m)  |

Use a solar blanket to hold in heat at night or during cool weather.

# Product # S425 Kit Components

| Kit | Qty | Item #   | Description  |
|-----|-----|----------|--|
|     | 2   | SCPNL220 | 2' x 20' (610 cm x 6.1 m) Polypropylene Solar Collectors |
|     | 2   | SC600HSE | 6' (1.829 m) Flex Hoses                                  |
|     | 1   |          | Limited Warranty   |

| SK-41 |   | System Kit for S425 |  |
|-------|---|---------------------|--|
|       | 2 | 69003               | Elbow Connectors                                   |
|       | 2 | 69002               | PVC End Caps 1 1/2" (3.81 cm) FPT                  |
|       | 4 | SC150CLMP           | 1 1/2" (3.81 cm) Stainless Steel Hose Clamps 35-64 |
|       | 1 | 60554               | Teflon Tape 1/2" (1.27 cm)                         |
|       | 1 | SC375HOSE           | 6" (15.24 cm) Long Rubber Hose                     |
|       | 1 | SC150VLVE           | 1 1/2" (3.81 cm) PVC FPTxFPT Ball Valve w/Union    |
|       | 1 |                     | Installation Manual                                |

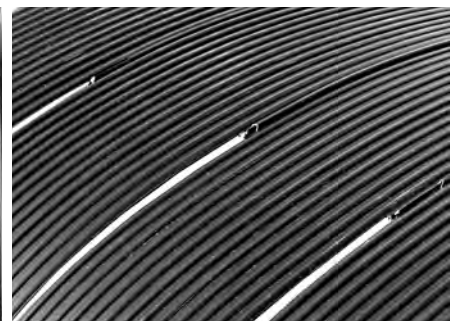


SC600HSE

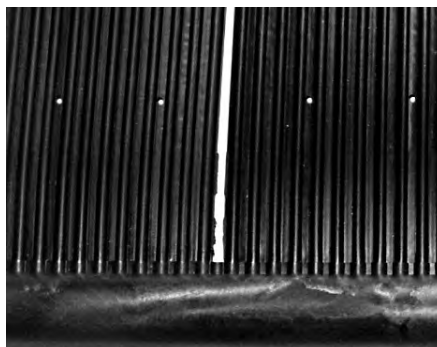


SK-41

SunHeater collectors are manufactured with special molds and materials designed to provide you with the most durable, high performance solar pool heating system available. Note: during manufacturing certain mechanical incisions are required to complete the assembly of the collector (see photos on right). These are normal and do not adversely affect the performance or durability of your SunHeater.



**Please Note:** Small holes in collector (see photo at right) are NOT to be used for mounting. Use only SmartPool-approved mounting kit SK43 and follow the directions provided. Failure to comply will void your warranty.

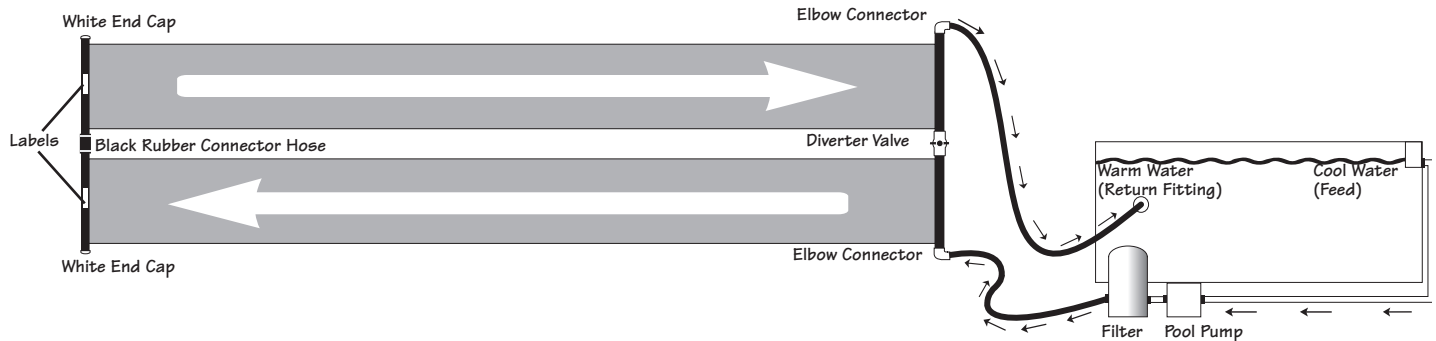


# SYSTEM LAYOUT

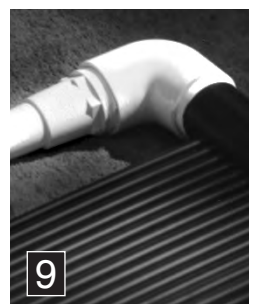
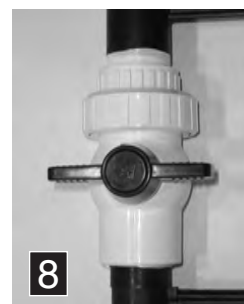
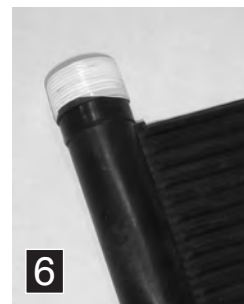
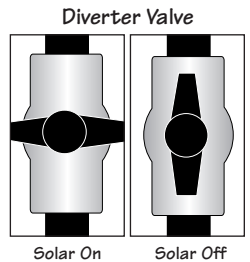
## Single Box

### Required:

- Flathead screwdriver or 5/16" (8 mm) nut driver.
- If solar collectors are placed farther than 6 ft. (1.829 m) from your pool equipment, you will need to purchase sufficient hose or pipe to connect the collectors to your pool equipment.



1. Provide an area that is free of any sharp objects with at least 6 hours of full sunlight a day.
2. Remove strap from collectors and unroll them next to each other placing the headers with the serial number labels away from your pool equipment (as shown above).
3. Allow the collectors to relax in the sun (30 minutes to an hour). **DO NOT LAY COLLECTORS ON THE GRASS IT CAN DAMAGE THE LAWN UNDERNEATH! DO NOT WALK ON COLLECTORS.**
4. Remove and discard the black protective end caps covering the threaded ends of the header pipes.
5. Join the headers with the labels together using one black rubber connector hose and two 1 1/2" (3.81 cm) hose clamps. Position hose clamps 1/2" (1.27 cm) in from each end of rubber connector hose and tighten (as shown). Do Not Overtighten. Do not push connector hose against tubes of collector.
6. Wrap the 6 remaining threaded ends of the headers with Teflon tape provided (as shown) for a watertight seal.
7. Thread white end caps on the open ends of the headers with the labels (as shown).
8. Join the headers without the labels together using the diverter valve provided (as shown).
9. Thread elbow connectors on the open ends of the headers without the labels (as shown). Be careful not to cross-thread.
10. Turn off pool pump.
11. Go to pool and plug the round return fitting on the pool wall from the inside so the water won't drain through (a winter plug works well).
12. Remove the hose that is clamped to the filter outlet and the back of the return fitting.
13. With one of the flex hoses provided, clamp one end to the filter outlet and the other end to lower elbow adapter. (Do Not Overtighten) Always fill the system from the bottom.
14. With the other flex hose provided, clamp one end to the other elbow connector and the other end to the return fitting on the outside of the pool wall.
15. From the inside of the pool wall, remove the plug you placed in the round return fitting.



### YOU ARE NOW READY TO START-UP YOUR SOLAR POOL HEATER

16. Turn on the pump. Check for leaks and tighten the connections that need attention.

Note: Upon start-up you will see air bubbles come through the return hose.

This is normal and will stop after all the air has been purged from the solar heating system.



# OPERATION & MAINTENANCE

## Operation

1. The collectors should feel cool to the touch when the sun is shining on them and water is passing through. This means that the heat is being transferred to the water.
2. The water returning to your pool will be a few degrees (3-5degrees F/ 2-3 degrees C) warmer than the pool itself. This is the most efficient way to heat a large body of water like a pool. Keep circulating the water and add a few degrees each pass.
3. Circulate water through the solar collectors at least 6 hours per day during the daylight hours on sunny days. If you circulate water through it at night, or when it's overcast or on chilly days, you will cool your pool water rather than heat it. If you need to run your pump at night, open the diverter valve so that water goes directly back to the pool, bypassing the solar system.

## Winterization

**YOUR SOLAR SYSTEM MUST BE DRAINED FOR WINTERIZATION! FREEZE DAMAGE IS NOT COVERED UNDER WARRANTY! YOU MUST DRAIN YOUR SOLAR COLLECTORS JUST LIKE YOU DRAIN THE REST OF YOUR POOL EQUIPMENT!**

Remove the white end cap at the top of the solar system. Remove the white end cap at the bottom and be sure ALL the water is drained out of the system. Replace end caps and blow pressurized air through the system. After blowing them out, remove and store the bottom end cap for use again in the spring when you start up again. You can leave the collectors in place (as long as they are completely drained) and they will withstand even the harshest winters. SmartPool recommends that you store your collectors inside in a warm dry place.

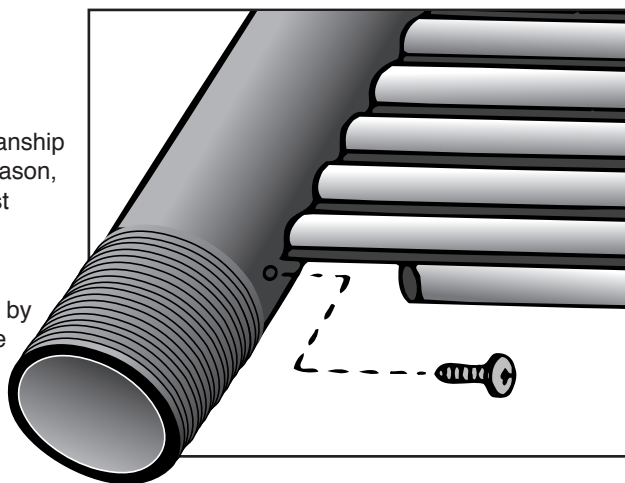
## Collector Repair

### IF A COLLECTOR DEVELOPS A LEAK

Your solar collectors are warranted against defects in materials and workmanship (see warranty for details and limitations). If a leak develops for any other reason, you may use the repair method shown. Collectors are not warranted against freeze damage.

### SOLAR COLLECTOR REPAIR

This method allows for an easy and permanent, on-site repair of a collector by isolating the leading riser tube. Referring to the figure at the right, locate the tube to be isolated. (End tube has been shown for clarity). Using a sharp utility knife, very carefully cut away approximately 1" (25 mm) of the tube at both headers. Drive a #10 sheet metal screw, preferably stainless, into the hole in the header. The screw must be between 1/2" (12.7 mm) and 3/4" (19 mm) long.



**DO NOT OVERTIGHTEN!** If the screw strips out, or if the repair leaks, use a #12 screw. This repair method will not void the collector warranty.

With proper care and winterization, you will enjoy your solar heating system for many years.





- All Freight is [Included](#) (Certain Restrictions Apply - [Click for Details](#))

## [Listing of Product Instructions & Manuals](#)



Phone: **888-352-7582**

[The Legal Stuff](#) \* [Privacy Statement](#) \* [Contact Us](#) \* [Home](#)



[A+ BBB Rating](#)



Online Payment  
Service

| Site Info  |                |
|--|----------------|
| propools.com   |                |
| Rank:  | <b>878,021</b> |
| Links in:  | <b>67</b>      |
| Powered by  Alexa |                |



[Authorized Hayward Dealer](#)

Proud of the [Manufacturer's](#)

### **Phone Hours**

Mon. - Fri. - 8:00 - 5:00 CST

Due to circumstances beyond our control product availability may be limited from time to time.  
Before installing or operating any swimming pool/spa related product, read the manufacturers' instructions, warnings and installation instructions.