



SAFETY COVER MEASUREMENT FORM

Our Safety Covers ARE **CERTIFIED-SAFE!** Most **OTHERS ARE NOT!**

If you live in a climate in which the leaves fall off of the trees and/or the pool needs to be winterized; the pool should have a Winter Pool Cover.

The best is a Certified-SAFE Safety Cover which is available in mesh or solid material. All of our Safety Covers meet the rigid ASTM testing standards. Which means our covers are the strongest in the industry. Don't you want the best to protect your pool and most importantly your family?



The following four pages should be filled out as completely and accurately as possible in order to assure the Certified-SAFE Safety Cover is made to fit properly.



You may return this form to us in any one of two ways:

1. Email: sales@propools.com

2. Mail:

Pro Pools
c/o Safety Covers
2922 Brick Church Pike
Nashville, TN 37207

It is always best if you can send to us a sketched drawing of your pool and the five foot area directly around the edge of your pool. If you would like to send us a digital image or two of your pool area, just email them to the sales@propools.com.

Have Cover Questions? Call 888-352-7582

Hours: 8AM – 5PM Central

Ship To:
NAME _____
STREET _____
CITY/STATE _____
PHONE # _____ ZIP _____
E-MAIL _____



888-352-7582 - sales@propools.com

☐ *ORDER* ☐ *QUOTE* DATE _____

COVER MODEL

- MERLIN

☐ SMARTMESH

☐ DURA-MESH

☐ CLASSIC-MESH

☐ SOLID SAFETY COVER
- ARCTIC ARMOR

☐ PREMIUM MESH

☐ SUPER MESH

☐ STANDARD MESH

☐ ULTRA LIGHT SOLID

- POOLTUX

☐ ROYAL MESH

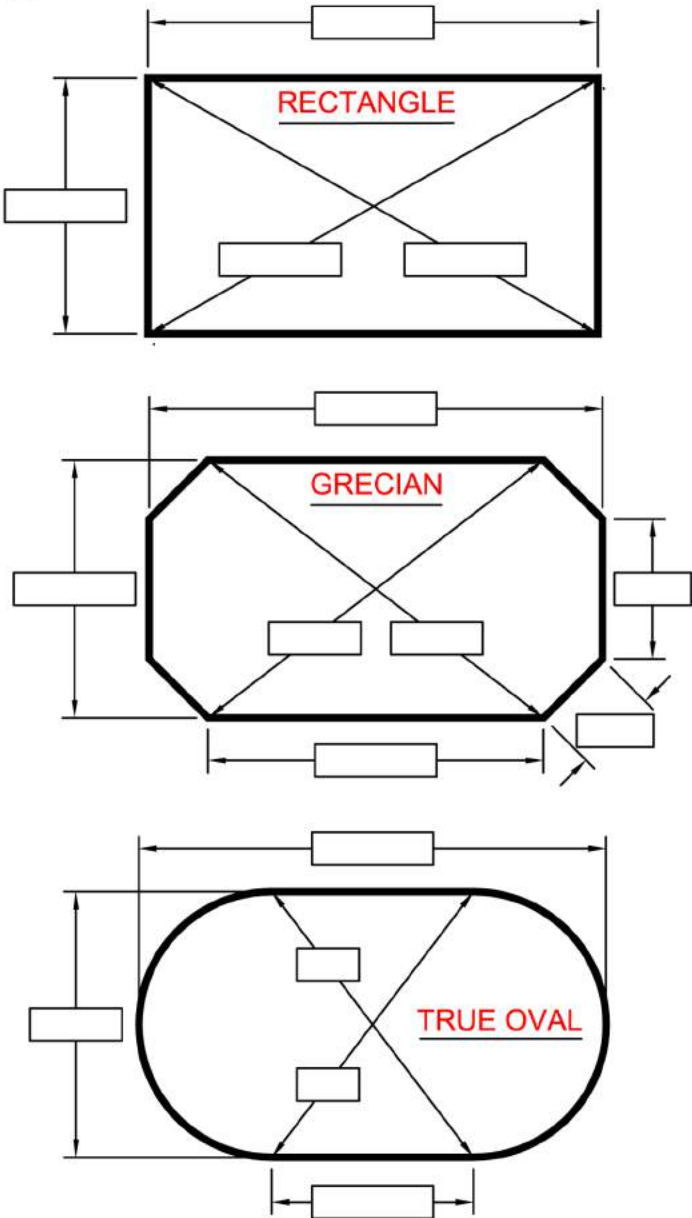
☐ KING99 MESH

☐ EMPEROR SOLID

☐ KING SOLID
- LOOP-LOC

☐ MESH

☐ SOLID



COMPLETE THE SECTIONS WHICH APPLY, OTHERWISE LEAVE BLANK.

SKETCH IN STEP LOCATION AND DIMENSIONS.
(SIZE AND LOCATION)

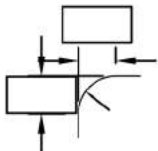
DIRECTION IS DETERMINED BY STANDING IN SHALLOW END.

POOL CORNER TYPE & SIZE

IF POOL CORNERS ARE GREATER
THAN 2' RADIUS OR DIAGONAL.
PLEASE SPECIFY THE TYPE AND SIZE.



DIAGONAL
DISTANCE
(INCHES)



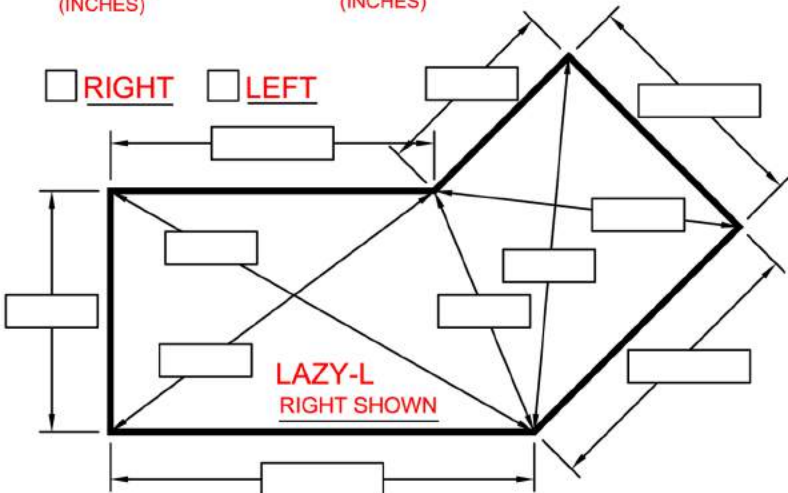
RADIUS
(INCHES)

ANCHOR/DECK TYPE

- ☐ CONCRETE
- ☐ WOOD DECK
- ☐ PAVERS

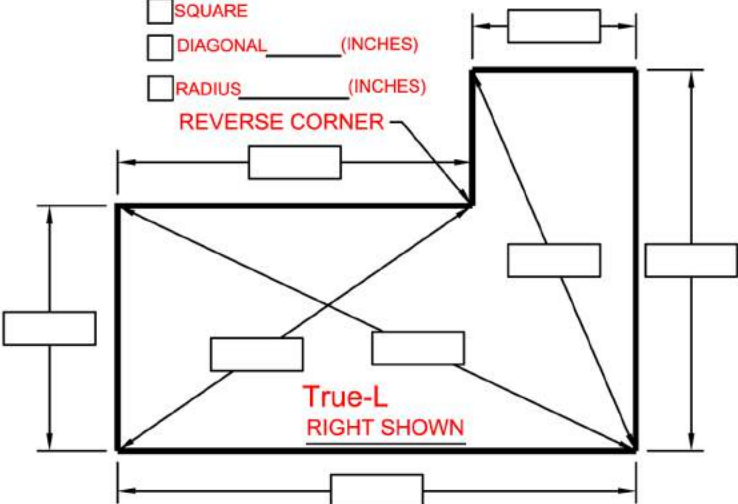
[CLICK HERE FOR MORE
INFORMATION ON
MEASURING RADIUS
CORNERS.](#)

- ☐ RIGHT ☐ LEFT



- ☐ SQUARE
- ☐ DIAGONAL _____ (INCHES)
- ☐ RADIUS _____ (INCHES)

REVERSE CORNER



- ☐ RIGHT ☐ LEFT

MEASURING INSTRUCTIONS

ONLY COMPLETE LEGIBLE ORDERS CAN BE PROCESSED

1. Begin with a freehand sketch indicating inside pool dimensions. The sketch should include pool orientation and the "A-B" line location. Include deck area, and any obstructions within 3' of the waterline.

A photo of the pool is needed when rocks, spas or anything out of the ordinary exists. It's recommended to take pictures of the numbered points at obstructions.

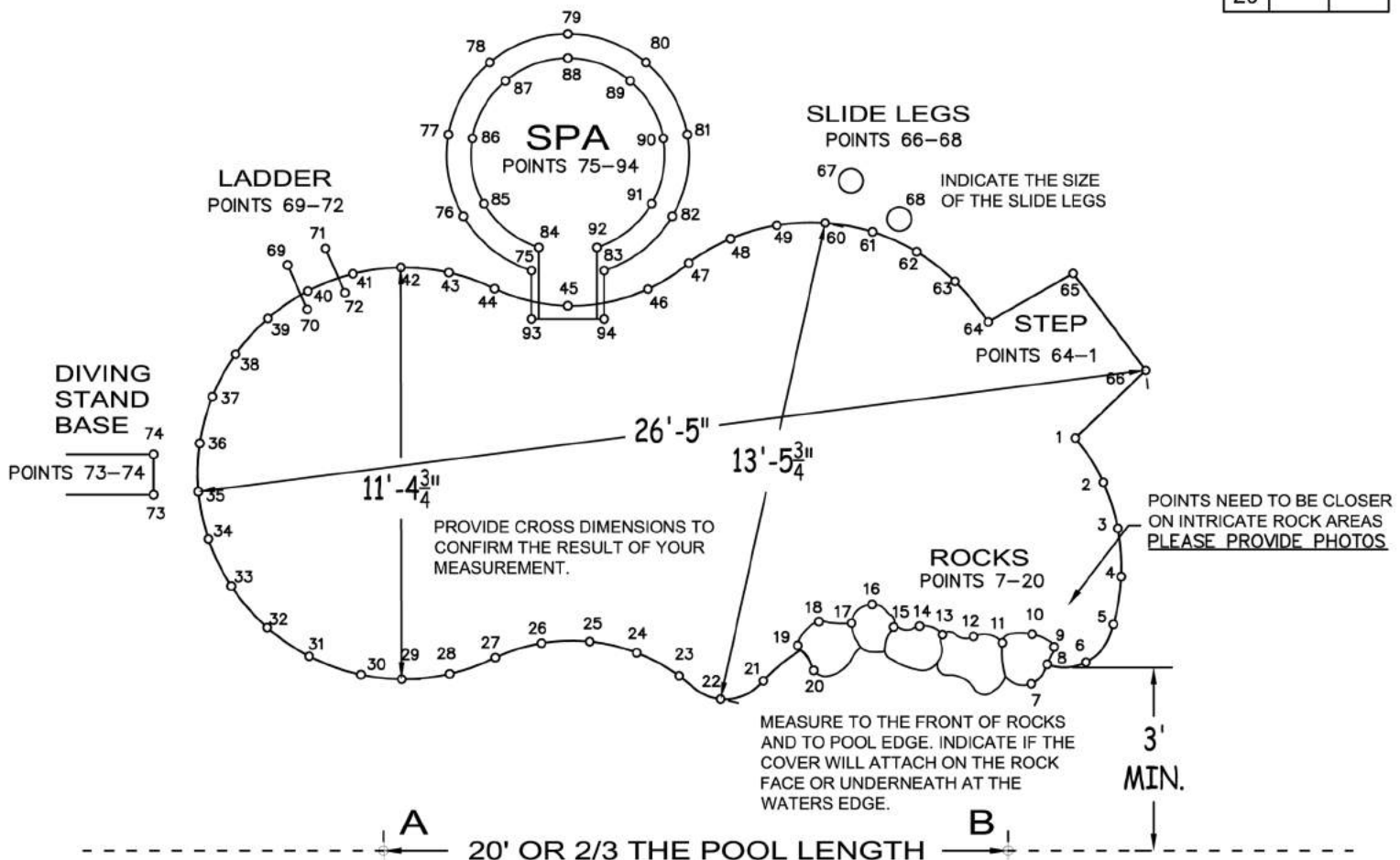
2. Establish two points, "A-B" with "A" on the left as shown. The "A-B" line must be 3' away from the pool and 2/3 the length of the pool; 20'-25' is typical (show this on the sketch). To mark "A-B" points on deck - use chalk marks, on ground - use stakes in the dirt. Do not remove the "A-B" points until the measurements have been confirmed and approved. NOTE: The "A-B" line must never cross the pool line and should be approximately 3' away from the pool at the closest point (4' to 5' away from pools over 44' long).

3. Using chalk, mark and number points along the inside edge of the pool at approximately 2' intervals. Number all corner points, ladders, handrails, grabrails, slide legs, rocks, spillways, spa walls separating spa and pool, fill spout and dive stand. 1' intervals should be used in small or tight radius areas. At least 3 points along straight walls.

4. Measurements are now taken from point "A" to #1, then point #2, and all the way around the pool. Then measure from point "B" to same point #1 and then #2, as you did for point "A". Measurements are listed in column format as shown.

5. Take measurements between two known points to determine length and width cross dimensions of the pool. Cross dimensions to any raised beam obstacles are recommended.

NO.	A	B
1	25'-2"	20'-8"
2	26'-10"	19'-3"
3	28'-5"	18'-6"
4	30'-4"	17'-11"
5		
6	CONTINUE	CONTINUE
7	CONTINUE	CONTINUE
8	CONTINUE	CONTINUE
9	CONTINUE	CONTINUE
10		
11		
12		
13		
14		
15		
16		
17		
18	↓	↓
19		
20		



NOTE: MAKE SURE THE A-B LINE IF EXTENDED IS NOT CROSSING THE PERIMETER OF THE POOL.

Questions? Call 888-352-7582 or Email sales@propools.com

NAME _____ DISTANCE FROM "A" TO "B" _____

	A	B
1		
2		
3		
4		
5		
6		
7		
8		
9		
10		
11		
12		
13		
14		
15		

	A	B
16		
17		
18		
19		
20		
21		
22		
23		
24		
25		
26		
27		
28		
29		
30		

	A	B
31		
32		
33		
34		
35		
36		
37		
38		
39		
40		
41		
42		
43		
44		
45		

	A	B
46		
47		
48		
49		
50		
51		
52		
53		
54		
55		
56		
57		
58		
59		
60		

	A	B
61		
62		
63		
64		
65		
66		
67		
68		
69		
70		
71		
72		
73		
74		
75		

	A	B
76		
77		
78		
79		
80		
81		
82		
83		
84		
85		
86		
87		
88		
89		
90		

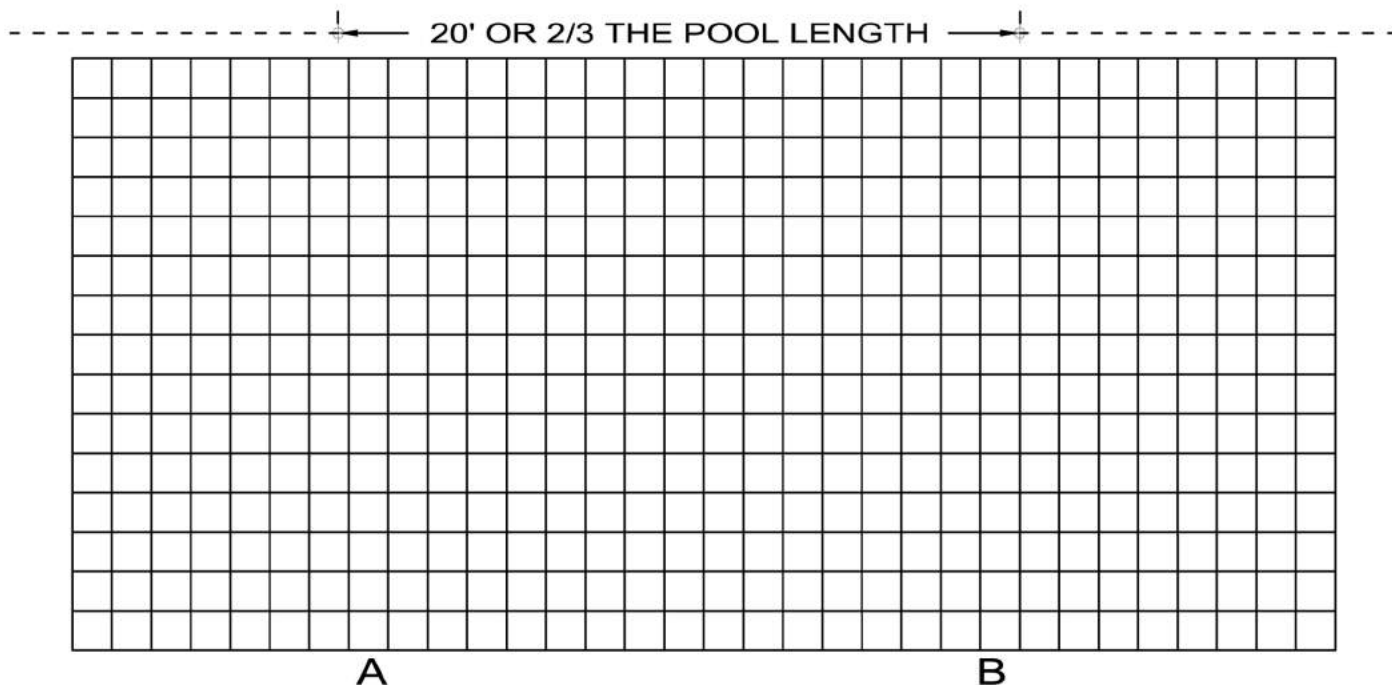
	A	B
91		
92		
93		
94		
95		
96		
97		
98		
99		
100		
101		
102		
103		
104		
105		

	A	B
106		
107		
108		
109		
110		
111		
112		
113		
114		
115		
116		
117		
118		
119		
120		

CROSS DIMENSIONS #1: FROM POINT # _____ TO POINT # _____ LENGTH _____
 CROSS DIMENSIONS #2: FROM POINT # _____ TO POINT # _____ LENGTH _____
 CROSS DIMENSIONS #3: FROM POINT # _____ TO POINT # _____ LENGTH _____
 CROSS DIMENSIONS #4: FROM POINT # _____ TO POINT # _____ LENGTH _____

NAME _____

Questions? Call 888-352-7582 or Email sales@propools.com



1. Non-Removable handrails, grabrails, or ladders:

Pt # _____ to Pt # _____
Distance back from pools edge: _____
Distance over waters edge: _____

2. Raised rail sockets or fill spout:

Pt # _____ to Pt # _____
Distance back from pools edge: _____
Height of rail socket or fill spout: _____

3. Dive stand:

Pt # _____ to Pt # _____
Distance back from pools edge: _____
Is a Y-strap required? _____

4. Dive rock: (Please Supply Photo)

Pt # _____ to Pt # _____
Distance back from pools edge: _____
Distance over waters edge: _____

5. Slide legs or slide base:

Pt # _____ to Pt # _____
Distance back from pools edge: _____
Size of slide legs or slide base: _____

6. Decking type & quantity:

Which type of material is your deck made of:
Concrete: _____
Pavers: _____
Wood: _____

What is beyond your decking? _____

How wide is your decking? _____

If less than 3' RDM's may be required

7. Grass area: (Please Supply Photo)

Pt # _____ to Pt # _____
Distance back from pools edge: _____

8. Coping:

Is the coping rough and requiring extra padding and if so please choose one:
Loose: _____ (2' x 20' sections)
Replaceable: _____
Sewn on: _____

9. Rock formation: (Please Supply Photo)

Pt # _____ to Pt # _____
Distance back from pools edge: _____
Distance over waters edge: _____

*Are the rocks strong enough for the cover to attach w/spring clips and i-bolts? _____

11. Spa: (Please Supply Photo)

Pt # _____ to Pt # _____
Is spa going to be covered? _____
Is separate cover required? _____
Is spa raised above deck? _____
If Yes, how high? _____

*Spa's raised over 16" will be designed as a separate cover.

Does spa have a spillway? _____

If Yes, please locate between points.

Are there any specific spa cover design instructions? _____

Please specify, _____

ProPools
Just More Fun