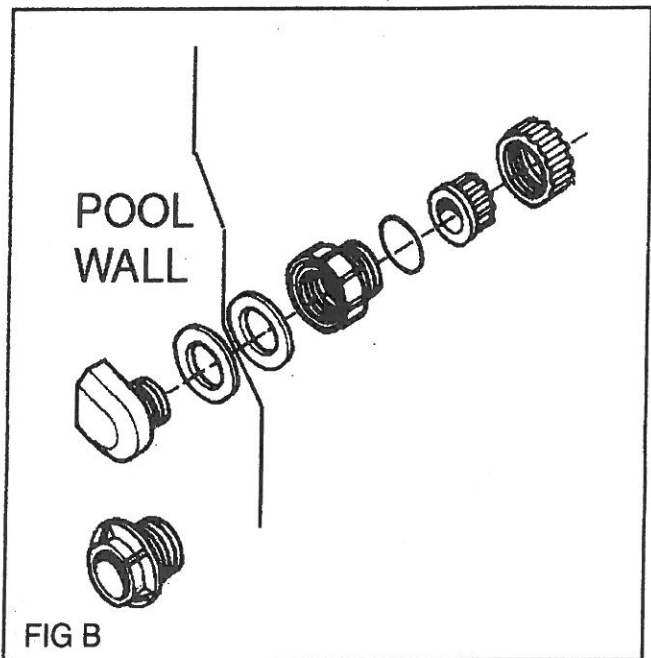
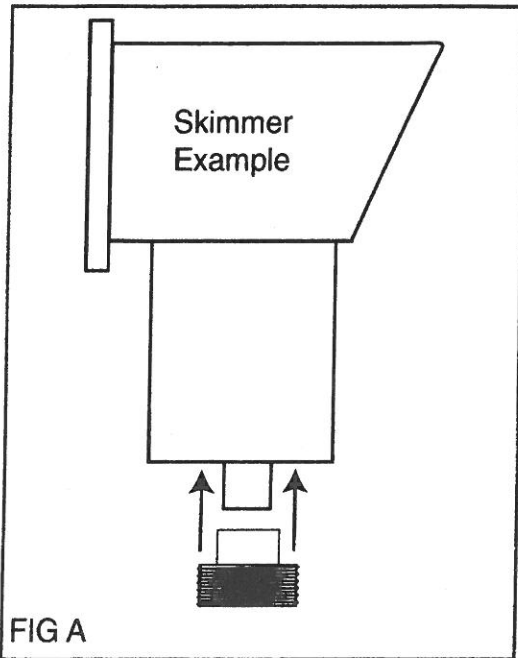


SKIMMER HARD PLUMB KIT

Model 0-2351-014

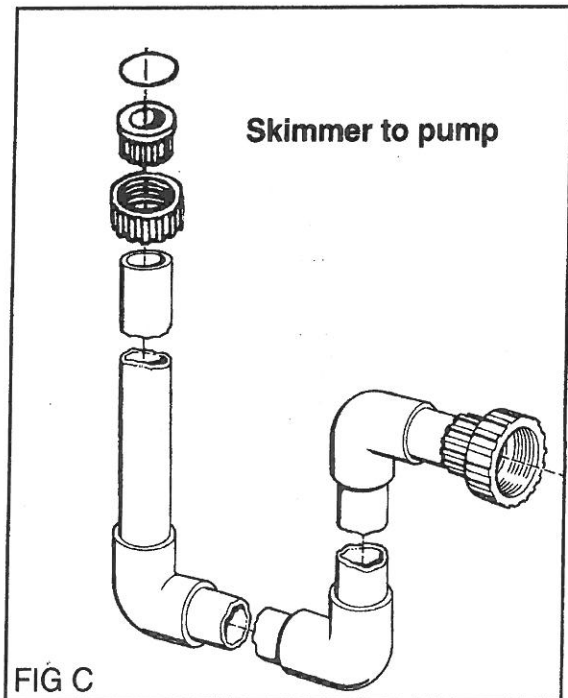
NOTE: Parts included in kit are for skimmer and return only, extra hard plumb parts will be needed to completely hard plumb filter and pump.

1. Glue ITEM #(1) THREADED UNION SOCKET, onto bottom of skimmer using PVC/ABS solvent cement. Do not allow solvent cement to contact thread area or O-ring groove. Follow solvent cement directions carefully, once part is glued it is permanent. See FIG A



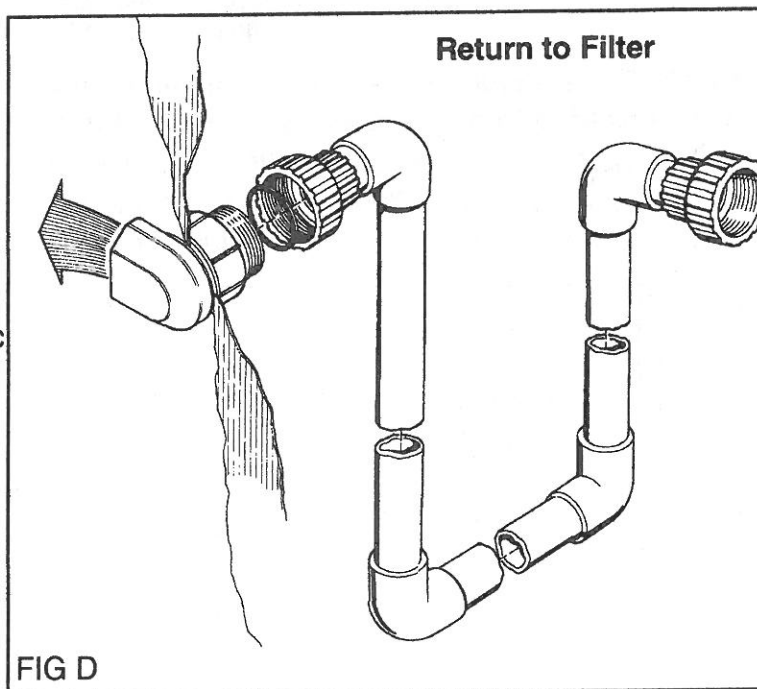
2. Slip a gasket over the threads of the return fitting (included with skimmer) and push threaded end through the wall from the inside. Place a second gasket over the threads exposed outside of pool wall. Thread UNION ADAPTER (Item #5), onto return fitting and tighten. See FIG B.

3. Route and plumb PVC pipe for Skimmer to Pump and pre-assemble prior to gluing and check for fit. Place Union nut (Item #3), over pvc pipe prior to gluing Union socket (Item #2). See FIG C for typical plumbing installation.

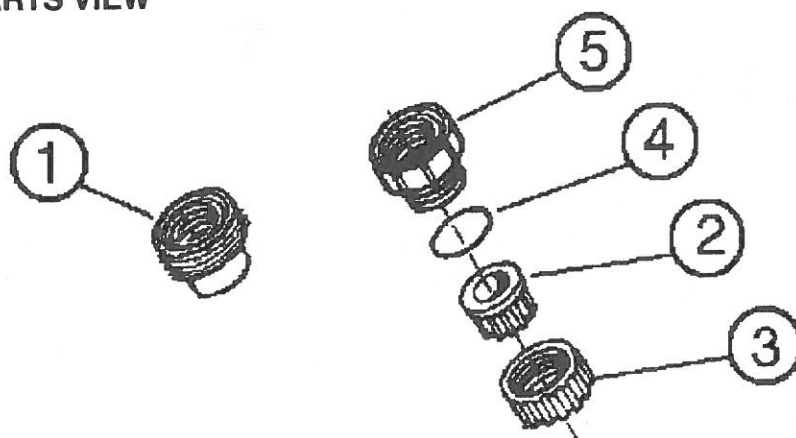


4. Route and plumb PVC pipe for Return to Filter and pre-assemble prior to gluing and check for fit. Place Union nut (Item #3), over pvc pipe prior to gluing Union socket (Item #2).

See FIG D for typical plumbing installation.



EXPLODED PARTS VIEW



ITEM	PART NUMBER	DESCRIPTION	QTY
1	340-2499	Threaded union socket	1
2	340-2485	Union socket	2
3	340-2484	Union nut	2
4	308-1241	O-ring	2
5	340-2495	Union adapter	1