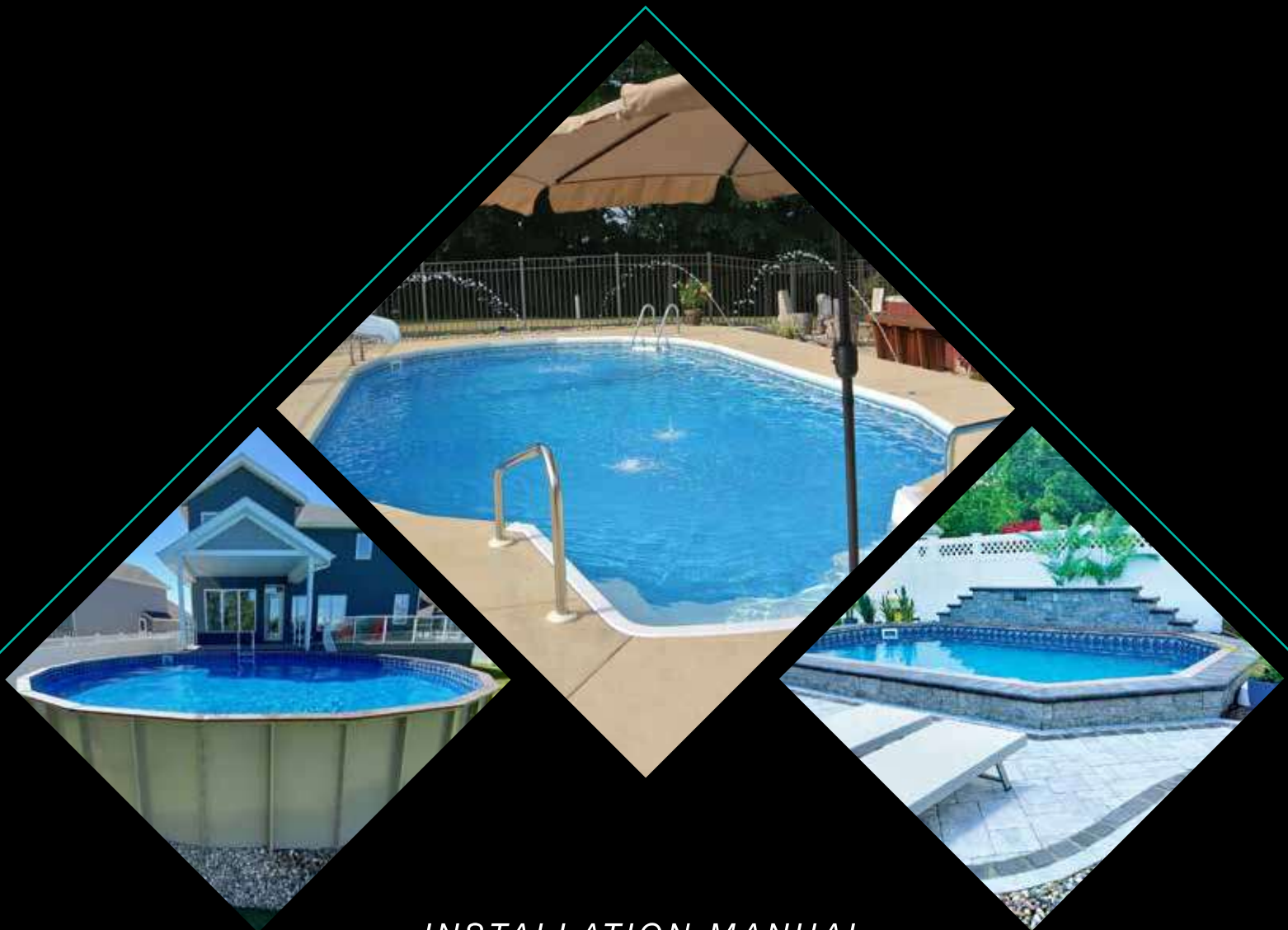
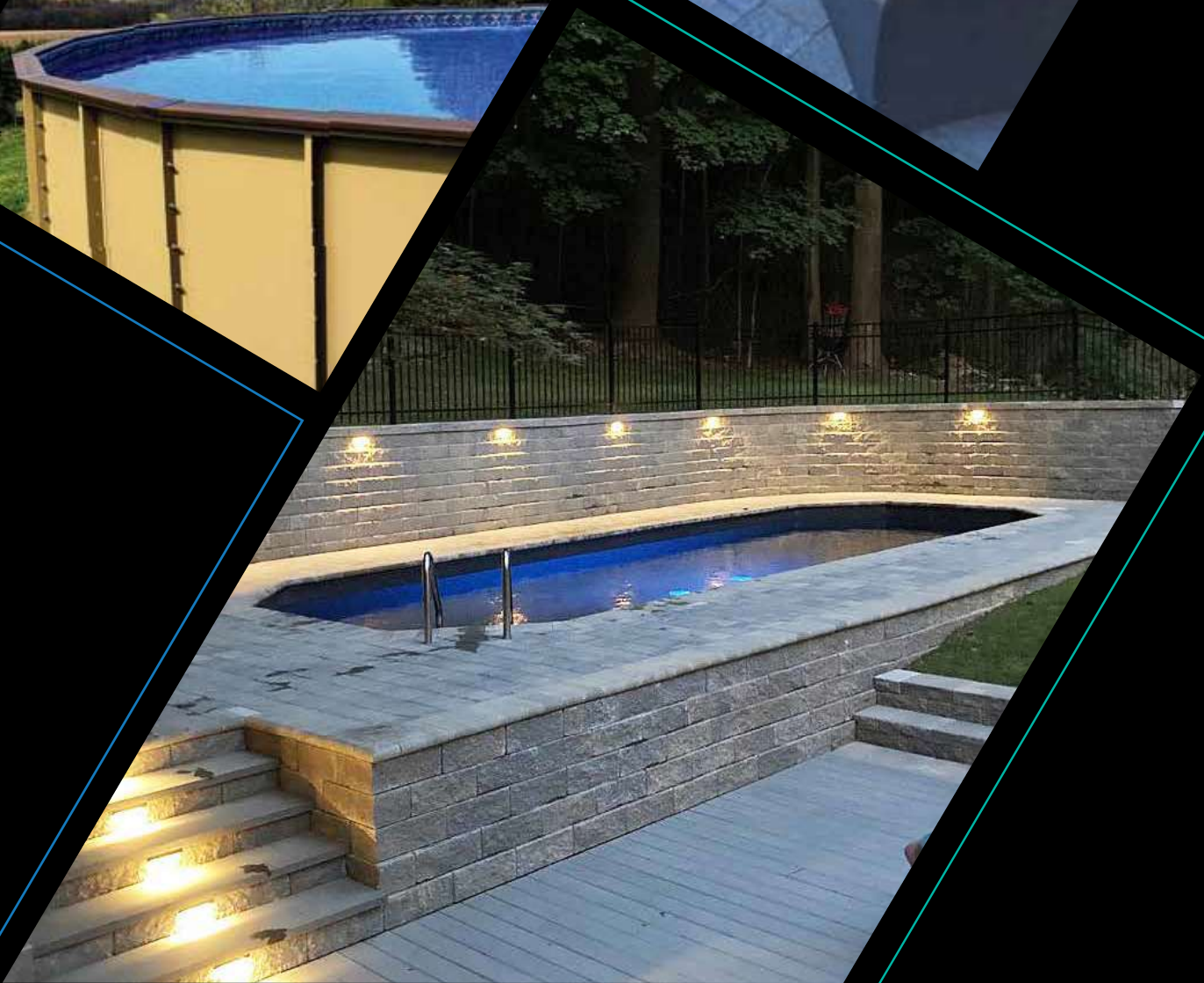




THE
ULTIMATE
POOL



INSTALLATION MANUAL





THE ULTIMATE POOL *TABLE OF CONTENTS*

INTRODUCTION

Congratulations	4
Safety	4-5

TOOLS AND MATERIALS

Site Prep	6
Pool Assembly	6
Pool Bottom Base	6
Footer Mix	6

SITE LOCATION & PREPARATION

Location and Preparation	7
Preparation • Grecian and Oval	7
Preparation • Round	8

POOL & WALL LAYOUT

Grecian & Oval	9
Round	10-11

SETTING THE WALLS

Wall Installation	11-12
-----------------------------	-------

OPTIONAL WALK-IN STAIR

Stair Options	12-13
Stair Installation	13
Stair Location	13

TOP SEATS

Installing the Top Seats	14
Synthetic Wood	14
Installing Rebar • Grecian	15
Installing Rebar • Oval	15

COPING

White Bendable Aluminum	15
-----------------------------------	----

SKIMMER & RETURN FITTINGS

Mounting	16
--------------------	----

GRECIAN & OVAL BONDING RING

Pouring Concrete Bonding Ring	16
---	----

FINISHING THE INSIDE

Installing the bottom	17
Installing the Liner	18
Cutting in Skimmer & Return Openings	19-20

FILTRATION

Installing the Filtration Equipment	20
---	----

POOL DRAWINGS

The Ultimate Grecian	21-30
The Ultimate Oval	31-37
The Ultimate Round	38-46

INTRODUCTION

CONGRATULATIONS

Congratulations on your decision to purchase the truly unique and superior Ultimate Grecian, Oval, or Round pool! These 14-gauge powder-coated steel pools are the strongest and most versatile pools on the market today.

As you read through this Manual, please note we stress the importance of **proper installation** to ensure a long lasting and safe investment to enjoy for years to come. This pool is designed to be installed by the 'do-it-yourself' Homeowner or a professional pool installer.

Rebar stakes are provided and **MUST** be installed in every hole at the base of the pool wall **or the manufacturer's warranty is void.**

All Ultimate Pools carry a lifetime warranty on the steel panel system. To protect your investment, please fill out and send back your warranty cards once the pool is constructed.

NOTE:

Grecian, Oval, and Modified Rectangle Ultimate Pools **MUST BE BURIED** at least 24" below grade and have a concrete collar poured around it.

SAFETY

All Ultimate Pool kits are supplied with a safety packet including information about the swimming pool safety and a no-diving/no jumping sign to be placed on the top rail of the pool near the ladder entry/exit.

PLEASE NOTE: Ultimate Pools are **NOT** safe for diving or jumping of any kind. For your safety and the safety of your family and friends, please read the safety information thoroughly.



⚠ DANGER

**NO JUMPING!
NO DIVING!**

Shallow water.
You can be
permanently injured.

DO NOT DEFACE, COVER, OR PAINT OVER THIS SIGN



DANGER! NO JUMPING! NO DIVING! SHALLOW WATER.

The Ultimate Pool is NOT designed for diving. Misuse could lead to serious injury or death.
Children should be supervised at all times.



TOOLS AND MATERIALS

SITE PREP

- Transit or Similar Leveling Device
- Earth Moving Tools; Shovel, Rake, Wheelbarrow...
- String Line
- Hammer
- Spray Paint or Similar Ground Making Product
- (2) Tape Measures

POOL ASSEMBLY

- (2) 9/16" Wrenches/Ratchet Sockets
- 2' or 4' Level
- Drill with 5/16 Nut Driver Head and #2 Phillips Bit
- #2 and #3 Phillips Screw Driver
- Duct Tape
- Drift Pins
- Hammer
- Sharp Razor Knife
- Shop Vacuum
- Rounded (*bottom*) Trowel
- Sand Bottom Mix (*see chart below*)
- (1) 36" Flat Board 1x3 (*to level bottom mix*)

POOL BOTTOM BASE

Recommended Material - 6/1 Clean wash sand and portland cement or verimiculite (pre-mix bags)

FOOTER MIX

Truck delivered not bag concrete. Concrete specs 2500 PSI with 4" slump.

SITE LOCATION & PREPARATION

LOCATION AND PREPARATION

Site location in the yard is a crucial part of building a swimming pool. It is vital to locate the pool within the current building code requirements for your local municipality. A building permit may be required for the installation of your swimming pool and it is important to follow all guidelines associated with the local municipality.

The location selected should be virgin or compacted ground free of overhead power lines and other dangerous obstructions. If the pool is placed at the bottom of a large slope, a surface water management system may need to be added when landscaping around the pool. The Grecian, Round, and Oval Ultimate Pools can be buried completely in the ground, set into a hill or slope, and the ground can be backfilled against the pool wall if needed. Once the location of your pool is determined begin the layout process by locating the center point of your pool. **Refer to the pool drawing in the back of this manual that coincides with your pool.**

For Grecian and Oval pools, create a center line for the pool. Run a string line through the length of the pool location you have chosen. Drive a stake into the ground several feet beyond each end of the pool dimension and tie your string line to them. Locate the center of your pool and drive a stake into the ground. This center pin will be used to pinpoint all the layout points for the pool and wall assembly.

DO NOT REMOVE THIS CENTER STRING UNTIL ALL THE WALL PLACEMENT PINS ARE LOCATED!

PREPARATION • GRECIAN AND OVAL

Mark the ground to represent the over-dig area of the pool. **This over-dig is located 24” outside the perimeter of the pool.** If a walk-in stair is installed, the over-dig for the stair is 4’6”.

Refer to the pool drawing in the back of this manual that coincides with your pool.

PREPARATION • ROUND

NOTE:

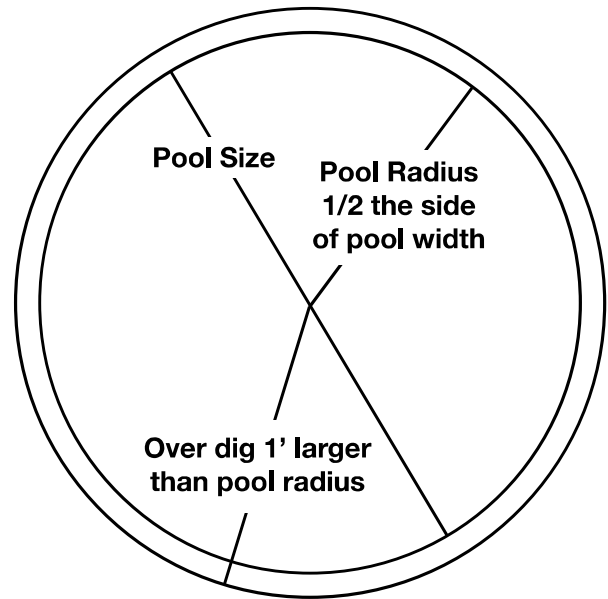
If you are installing a current 28' Ultimate Round Pool, it must be installed completely buried in the ground. Failure to do so will void all warranties.

Refer to the pool drawing in the back of this manual that coincides with your pool.

The first thing you need to do is to create a center line for the pool. For round pools, please see figure #1.

Make a circle on the ground which represents the over-dig area of the pool. **This over-dig is located 12" outside the diameter of the pool.**

Figure #1



With the ground marked for the outline of the over-dig, begin removal of the topsoil. It is important that the pool is built on undisturbed earth not fill dirt. Fill dirt will settle over time causing your pool to sink and become unlevelled. Remove the dirt until the ground is level, and free of rocks and/or sharp objects. A transit or laser level is the best tool for this job. These items can be rented at any tool rental store or mass merchant rental department.

NOTE:

For Grecian and Oval pools, begin removing the dirt to a minimum depth of 24".

POOL & WALL LAYOUT

Now that the dirt is removed and the ground is level it is time to begin laying out the pool and wall system.

There are several steps that need to be followed before placing the panels into position. Each panel must be marked on the inside face with a line 2" up from the bottom. This line will mark the finished level for the pool bottom under the liner.



GRECIAN & OVAL

From the center pin you can establish the four points that identify the end of the straight walls. Place a stake at each of these points. Check diagonal measurements to assure these pins are square with each other. Place a stake along the center string line to establish your points using the measurements noted on your drawing. Place a stake at each panel seam location as noted.

The next step is to establish where the skimmer panel will be placed. It is important that the skimmer panel be placed next to the straight wall. *See Figure #2 for Oval Example.* This position will play a crucial part when installing the liner. This panel also should be positioned so the prevailing wind will help push the surface water into the opening.

TIP:

For ease of installation, countersink a patio block behind each panel seam stake and confirm proper elevation by using the lazer level or transit.

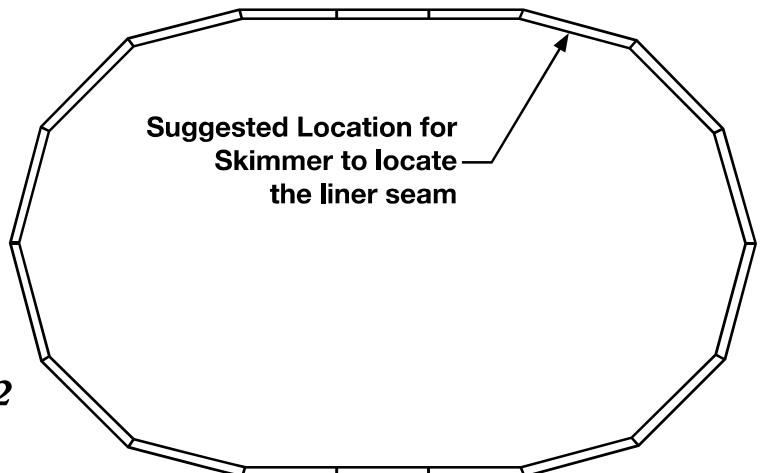


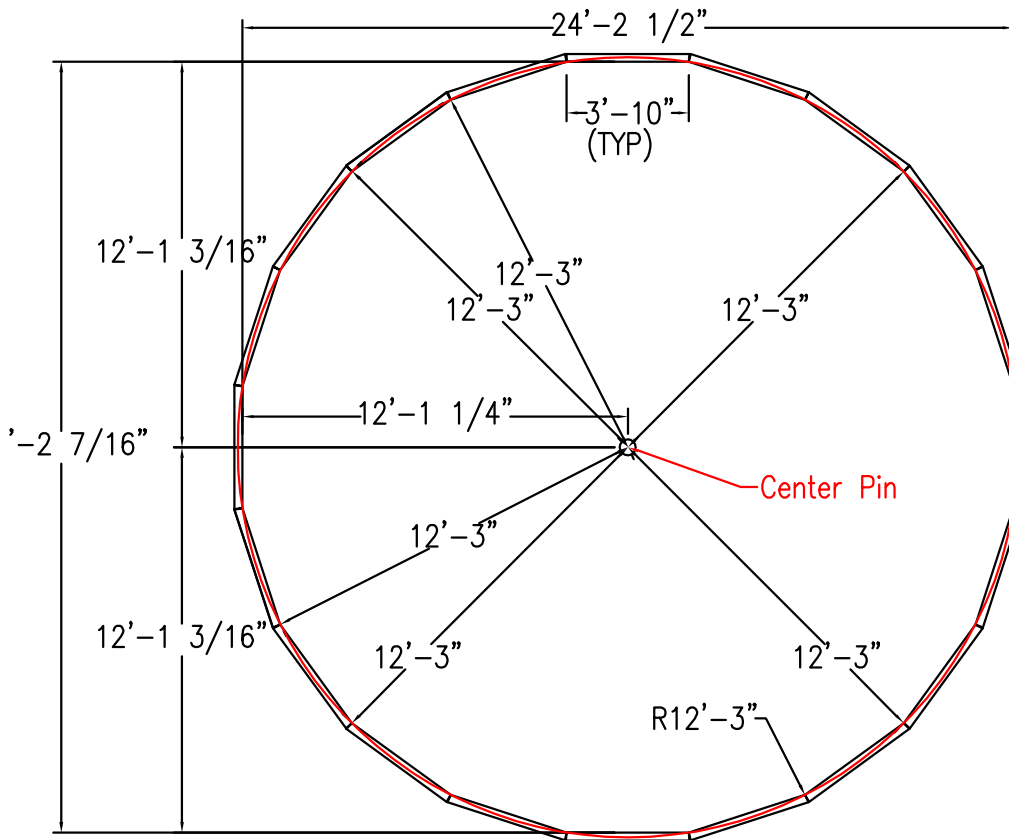
Figure #2

ROUND

First you must locate the center of the pool and place a supplied layout stake in this location. Next you will find that one panel is different from all the rest, this is the skimmer panel. A Grecian, Oval, and Round Skimmer Panels should follow the same position placement.

With the skimmer panel position identified, begin setting your layout stakes at the end of each wall panel joint location as shown in figure #3. This pin placement will mark the inside location of each panel joint.

Figure #3



Center pin to panel joint:

- 10' = 5'
- 18' = 9' 2"
- 21' = 10' 6 1/2"
- 24' = 12' 2 1/4"

Distance between pins:

- 10' = 2'
- 18' = 3' 10"
- 21' = 3' 10"
- 24' = 3' 10"



SETTING THE WALLS

WALL INSTALLATION

Begin moving your wall panels into place. Make sure you place the skimmer panel in the proper location. Remember that the filtration equipment will be placed behind this wall section on round above ground installations. That said, it will be visible and an electric service will be required to operate the pump. All the other panels are uniform and can be placed anywhere on the pool.

Semi-Inground or Inground installations, the filter equipment may be placed away from the pool. After all of the wall panels are placed around the site, it is time to begin the wall erection. Starting with the skimmer panel, align the front edge of the panel with the layout stakes in the location of your choice.

TIP:

Use 4x6 patio blocks at each joint to help level walls.

Secure the panels by using the 9/16" galvanized nuts and bolts that were supplied with this package. Begin bolting the panels together using only the top two and the bottom bolt on each seam, until you have closed the perimeter. Leave all bolts loose until wood is installed and pool is in final position.

NOTE:

Keep the panel connection on the outside of the layout stakes. We suggest that you hand tighten the panel bolts until the entire pool wall is erected.

After the wall is assembled double check the position of the wall matching the wall seam to the perimeter layout stakes.

The use of a drift pin (photo D), will help to align the bolt holes and keep the panels in position until the bolts are in place. An "A" frame buttress is also installed at every panel joint. All Grecian pools and Oval stright walls.

Do not use the two round holes at the base of the buttress support for plumbing runs. These holes are designed to allow the concrete bond beam to flow through for added support (photo E).



Photo D



Photo E

OPTIONAL WALK-IN STAIR

STAIR OPTIONS

There is an option to install an 8 foot 5-tread thermoplastic walk-in for all Ultimate Pools.

- **GRECIAN** stair options must be installed in the narrow end of the pool. Be sure to order the stair that matches your coping selection.
- **OVAL** stair option must be installed in the radius end of the pool. A special filler panel is supplied with this application.
- **ROUND** stair options must be installed in the narrow end of the pool.

When using the bendable aluminum coping, you should **bring the elevation up to or near the top of the bullnose stair as shown in photo C**. As you can see in photo A, there will be a void below the stair shell that must be framed out to hold back the concrete bond beam that will be poured behind and under the stair shell. After the finished elevation is established, drill through the stair flange at each bolt hole location using a ½” drill bit and bolt together.



Photo B



Photo C

STAIR INSTALLATION

Two stair buttress and two flange washers are included with each Ultimate stair. The stair buttress should be attached on the outside of the stair flange and the washer should be on the inside of the stair flange. This will create a “sandwich” of steel and flange, strengthening the plastic flange and reducing the chance that the bolts will be pulled through.

NOTE:

A special liner must be ordered when using ROUND and OVAL stair options.

STAIR LOCATION



First locate the stair placement at the site. **Insert the filler panel shown in photo A**. Align the appropriate panels to either side of the stair and clamp them to the stair flange. **When using the “synthetic wood” top rail the coping must be flush with the top of the stair as shown in photo B.**

Photo A

TOP SEATS

INSTALLING THE TOP SEATS

There are two top seat/coping options for the Ultimate Grecian Pool. There is the **(F) brown “synthetic wood”** with the aluminum side mount bead receiver, and the **(G) white bendable aluminum coping**. Each option will be covered in the following pages.

SYNTHETIC WOOD

This top seat is a brown “synthetic wood” with mounting brackets on the underside. Center the top seat on top of each pool wall panel. **The 90° angled bracket hooks under the outside of the panel top as shown in photo H.**

Photo H



It is very important to make sure the top seat is pressed against the top of the panel and both the coping and top seat are centered on the panel and before mounting. These self-tapping screws should be installed a maximum of 6” apart to insure the coping is secure to the panel and the liner will not “pull down” the coping. These screw heads will be hidden after the liner is installed. Make sure not to over-tighten screws or heads could break off causing the track to come loose. Use two layers of duct tape to cover the screw heads.

Locate the top cap joint covers and position them over each miter joint. Each cap hooks in the front first and secured to the top seat with color coated nails as shown in photo I.

Photo F



In your pool kit you will find sections of “dual track” white aluminum coping. To install the coping, you will need your power drill and a 5/16 hex head socket bit. Each section of coping should be positioned tight against underside of the top seat and attached to the pool wall using the self-drilling self-tapping hex head screws. These screws should pass through both the coping and the top seat bracket.

Photo I



As you tighten the bolts make sure the panels are flush on the inside and the top seat joints are together. This will ensure a smooth liner installation at the joints and a flush top seat fit. Use a level to make sure that the pool walls are both plumb and level.

DO NOT REMOVE THE INSIDE PERIMETER PINS. They will be needed to attach string lines for the pool bottom. If any sections of the pool wall are going to be buried completely into the ground, we highly recommend a concrete bond-beam be places behind all of these panels.

After the wall is assembled, double check the position of the wall matching the wall seam to the perimeter layout stakes

INSTALLING REBAR • GRECIAN

Finish the wall positioning by driving the 18” rebar stakes into the ground through all of the holes at the base of each panel. Make sure rebar is installed to correct depth. No more than 3” should be exposed when finished.

Finish by driving the 24” rebar into the ground through the holes at the bottom flange on the back of panel.

INSTALLING REBAR • OVAL

Finish the wall positioning; by driving the 18” rebar stakes into the ground through all of the holes at the base of each panel.

NOTE:

These rebar stakes must be installed in every hole at the base of the pool wall or the manufacturer’s warranty is void.

COPING

WHITE BENDABLE ALUMINUM



Photo G

The bendable aluminum coping is primarily used when pouring a concrete deck. This coping comes in 10ft sections and provide Grecian corners that are pre drilled for mounting to the top of the pool panel.

After the coping is mounted, place a support bracket on the back side in the middle of each panel and behind each coping joint. Lock the bracket into the back of the coping and fasten it to the top of the panel using one of the self-drilling screws.

Finish the installation by snapping a coping cap over each butt joint.

SKIMMER & RETURN FITTINGS

MOUNTING

Every Ultimate Pool is supplied with a pre-punched wall panel to mount the skimmer and return plumbing fittings. To mount the skimmer, simply insert the face of the skimmer through the rectangle opening in the wall and secure it using the two set screws supplied with the skimmer. If you have any questions, please refer to the manufacture's installation instruction in the skimmer package.



To install the return fitting, you need to un-thread the retaining nut from the fitting. Insert the threads through the pre-punched hole from the inside of the pool and tighten the retaining nut to the back of the fitting. **Be careful not over tighten this nut.**



Finishing up walls - Make sure to run duct tape down every panel seam to help with liner fitment.

GRECIAN & OVAL BONDING RING

If you have purchased a ROUND ULTIMATE POOL, you may skip this section.

POURING CONCRETE BONDING RING

It is necessary to pour a concrete bonding ring at the base of the straight walls. This mix should be on the dry side so it can be piled on a mound. When placing the concrete behind the wall, it needs to be piled high enough to cover the last two bolts at the base of the panels and continue beyond the support angles as shown.



NOTE:

The concrete bond beam needs to be a minimum of 2500 PSI truck mix. **DO NOT USE A BAG MIX.**



FINISHING THE INSIDE

INSTALLING THE BOTTOM

The first thing you need to do is to remove any loose rocks from inside the pool and level the ground as flat as possible. Make sure the pool walls are clean then run a piece of duct tape down the face of each panel joint to cover the entire seam.

Remember that pencil line we drew on the bottom of the panels? Now you need to tie a string line to the perimeter pins inside the pool at the level of the pencil mark or 2" up from the bottom of the panel. Then run a series of string lines across the pool to another pin. Continue doing this so you have several pie sections of string lines. The lines need to be taught so they will hold the level height of the finished bottom. The goal is to have at least 2" of space between the string line and the virgin ground. Begin to transfer the bottom material into the pool.

The bottom mix should be damp but not wet. There are several materials that can be used to make up the pool bottom. Mason sand is the easiest, but you can also mix a 6 to 1 sand to Portland cement mixture to create a harder bottom that will not shift with foot traffic during the swim season. If you choose to go with a hard bottom mixture and the sand is damp, **DON'T ADD WATER;** just mix them together for a "sand castle" consistency. See your pool dealer for additional pool base options.

Spread the bottom material around the floor of the pool and compact it to cover the string lines as you go. Use the edge of a flat board (about 36" long) to scrape the excess bottom material to expose the string lines. Run a trowel across the surface to smooth it out. A rounded bottom trowel works best. Remember to pull your pins and fill in their divots as you progress.



INSTALLING THE LINER

Remove the liner from the box and if possible, unroll it (end to end) in a clean, safe area near the pool. This will allow the vinyl to relax and the sun to soften the material as well. **DO NOT UNFOLD THE LINER AT THIS TIME.** A warm flexible liner will be easier to install than a cold stiff one. Also be sure to save the safety/warranty packet for later.



Before installing the liner, double check the pool walls and the pool bottom for any dirt or sharp objects that could damage the vinyl material. Lastly, make sure the skimmer and return gaskets are in place.

Find the seam in the side wall of the liner and position the liner so it will align over the skimmer opening inside the pool. We do this in case the liner pattern at the seam does not match well. This tile section will be cut out after installing the skimmer faceplate. With several people in place, pick up the unrolled liner and rest it on the top seat of the pool. The liner is folded so that it can be pulled across the pool area as it unfolds. Try not to drag the liner across the pool bottom any more than you have to.



The top of the liner has a vinyl bead welded to it. Install the liner by inserting the liner bead into the bottom track of the white aluminum coping.

The weight of the vinyl pulling down will keep the bead in the coping. Make sure that the points around the perimeter of the liner floor match up with the panel joints of the pool wall. All wrinkles must be removed before filling with water.

If you have a soft “push broom” you can tap the bristle end against the base of the liner wall to help move the bottom material and remove any wrinkles. Another trick is to insert a shop-vac hose through the top of the skimmer and down the pool wall through the rectangle opening behind the liner. Keep the vacuum hose at least 15” up from the floor. Turn on the vacuum and suck the liner back against the wall. If your suction is poor, you may need to tape the skimmer lid closed where the vacuum hose was inserted.

If you are satisfied with the fit of the liner, start filling it with water. After you have between 6” and 8” of water in the pool, you can remove the vacuum hose and prepare cutting in the skimmer and return fittings.

CUTTING IN SKIMMER & RETURN OPENINGS

Now that the water level in the pool is at least 6" deep, the side wall vinyl should be stretched tight enough to install the skimmer and return face plates. You will need a #3 Phillips head screwdriver and a good razor edge to install these plates.

NOTE:

Do not use a power screwdriver to install these screws. Over tightening can cause the holes to strip or the face plate to crack. If you have any questions, please refer to the installation instructions supplied with each fitting.

Find the twelve flat head skimmer screws that came with the skimmer along with the rectangle face plate and gasket. To start the mounting of the skimmer face plate, you must first find the four corner holes. Push your finger against the liner to find the round depression of the screw sockets for each corner screw. Push the tip of the #3 Phillips screw driver against the depression and turn the screwdriver to mark the vinyl. Insert one of the top corner screws through the face plate and gasket and drive it through the vinyl liner into the skimmer. Make sure the gasket is attached to face plate before mounting. Continue installing the other corner screws and fill in the blanks to complete. **DO NOT OVER TIGHTEN.**



To start the mounting of the skimmer face plate, you must first find the four corner holes. Push your finger against the liner to find the round depression of the screw sockets for each corner screw. Push the tip of the #3 Phillips screw driver against the depression and turn the screwdriver to mark the vinyl. Insert one of the top corner screws through the face plate and gasket and drive it through the vinyl liner into the skimmer. Make sure the gasket is attached to face plate before mounting. Continue installing the other corner screws and fill in the blanks to complete.

After the plate is mounted insert the razor edge through the vinyl at the inside edge of the face plate. Slowly run the blade around the inside perimeter and remove the section of material. You may want to keep this section of liner for future patch material.

The return fitting face plate is installed in a similar manner as the skimmer. First find the round face plate and the pack of four faceplate screws supplied with the fitting.



NOTE:

There is no gasket installed between the liner and the return face plate. Press your finger against the liner to locate and mark the (4) holes. Screw down the faceplate with the #3 Phillips screw driver and cut out the center section of vinyl with the razor edge.

To finish, snap on the face plate escutcheon to hide the screw heads. The return fitting has a directional eye that threads into the fitting. The directional eye should be positioned in an upward position away from the skimmer. The purpose of this fitting is to move the surface water around the pool and back to the skimmer. This fitting should not be tightened completely, only positioned for easy adjustment.



FILTRATION

INSTALLING THE FILTRATION EQUIPMENT

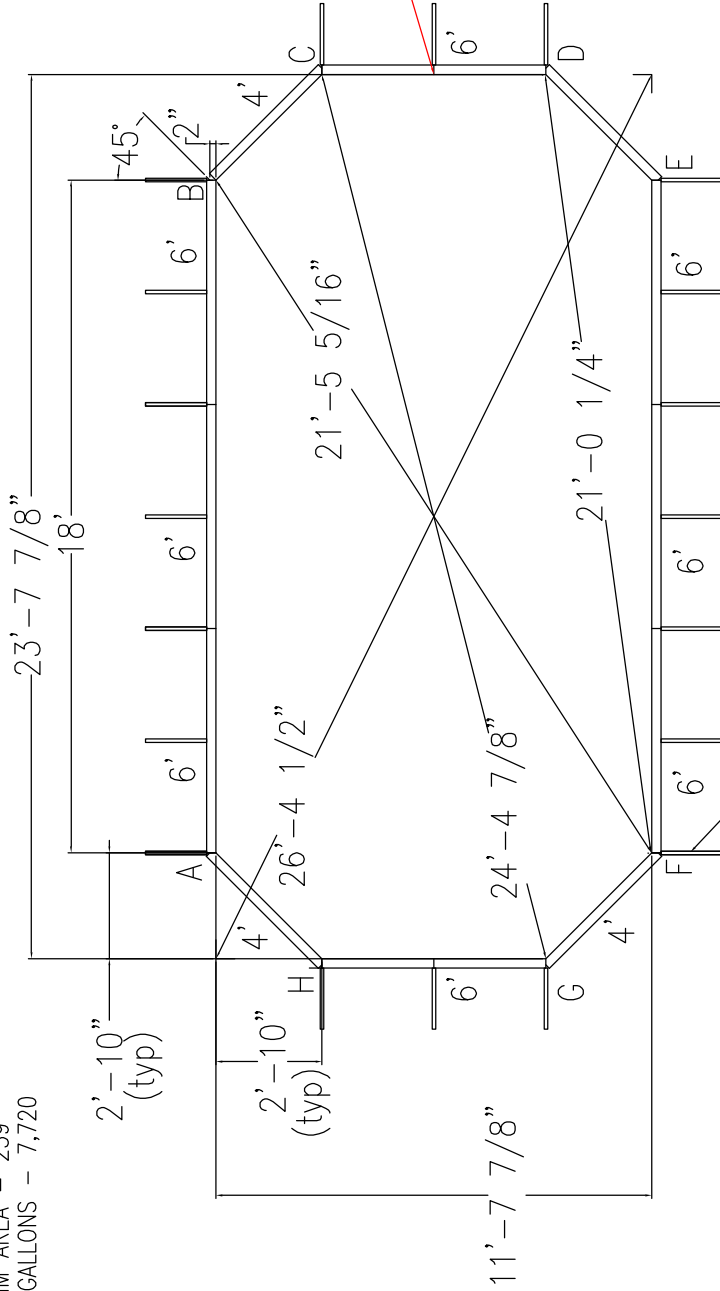


There are many types of equipment designed to filter the swimming pool water. Please check with your local pool dealer for the proper sizing and filter media to meet your needs. The Ultimate Pool comes with a 1 ½" PVC threaded orifices on the skimmer and pool water return. When installing the plumbing lines, make sure that the skimmer is connected to the front (suction) of the pump and the return fitting is connected to the discharge side of the filter. Shut off valves are recommended for service and maintenance on this equipment.

THE ULTIMATE
G R E C I A N
POOL DRAWINGS

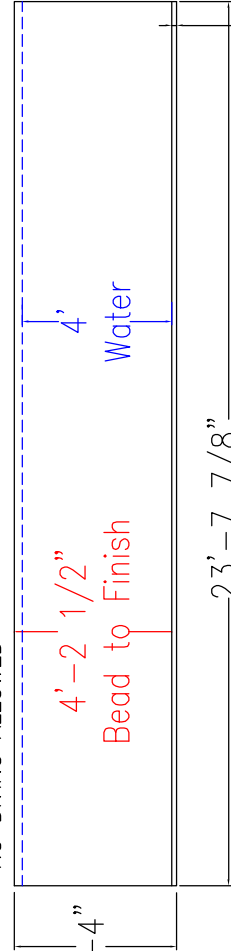


TRUE PERIMETER - 64'-0"
 SQFT SWIM AREA - 259
 APPROX GALLONS - 7,720



Single Buttress Locations

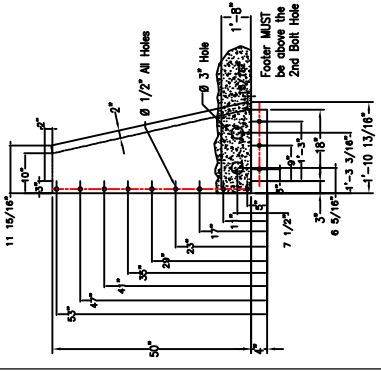
NO DIVING ALLOWED



NOTES;

1. ALL PANELS are 14 gauge, Powder-Coated Steel
2. Pool Walls should always be installed on virgin soil or compacted base material.
3. Buttresses are located at each joint along each side wall.
4. No Diving Board allowed! NOT Safe for diving!
5. IF USING BENDABLE BULLNOSE COPING ADD 3'-1/8" TO DIG DEPTH. BEAD TO FINISH WILL STAY THE SAME.
6. INSTALLATION TO BE IN ACCORDANCE WITH FOX POOL RECOMMENDATIONS

2' ULTIMATE GRECIAN BUTTRUSS



Seam Location

LNR PT# W2-1224G
 SNAP-IN CVR PT# W2-239
 SOLAR CVR PT# W20-104

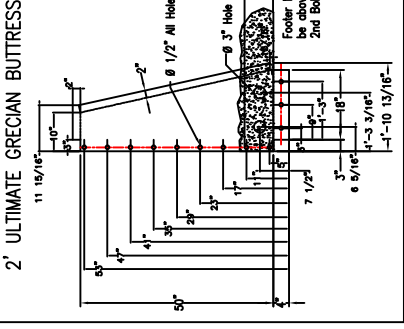
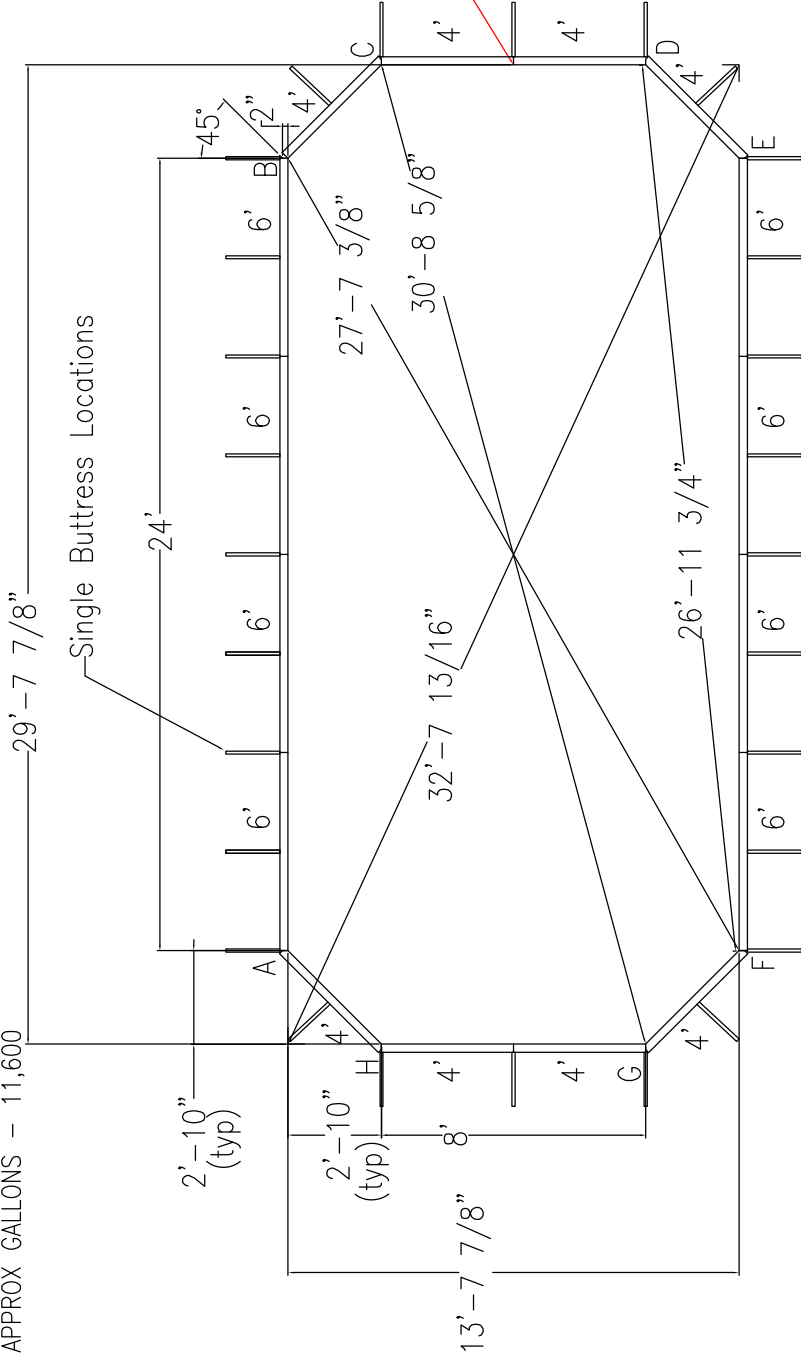
DRAWING MUST BE APPROVED
 AND SIGNED BEFORE ORDER
 WILL BE PLACED FOR ALL
 SPECIAL ORDERS.

DEALER _____
 LINER CHOICE _____
 DATE _____
 CUSTOMER _____

TITLE	1224 ULTIMATE GRECIAN
DATE	5/19/16
DWG. NO.	09-22586
DRW. BY.	J.LANDES
TYPE	0
SCALE	NONE

© ALL RIGHTS RESERVED

TRUE PERIMETER - 80'-0"
 SQFT SWIM AREA - 390
 APPROX GALLONS - 11,600

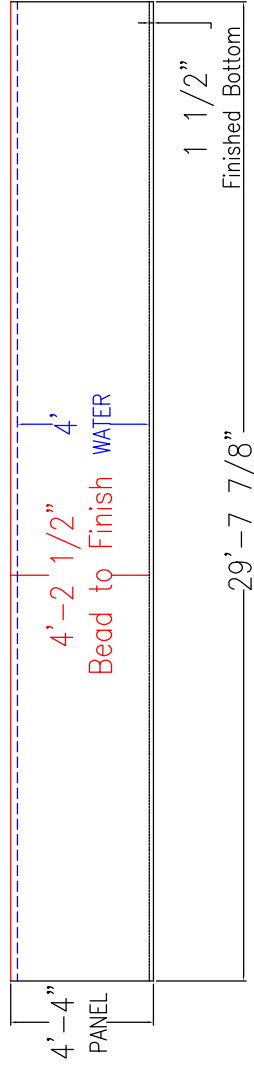


Seam Location

LNR PT# W2-1430G2
 SOLAR CVR PT# W20-100

DRAWING MUST BE APPROVED
 AND SIGNED BEFORE ORDER
 WILL BE PLACED FOR ALL
 SPECIAL ORDERS.

DEALER _____
 LINER CHOICE _____
 DATE _____
 CUSTOMER _____



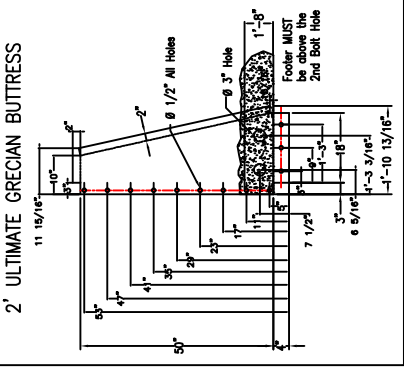
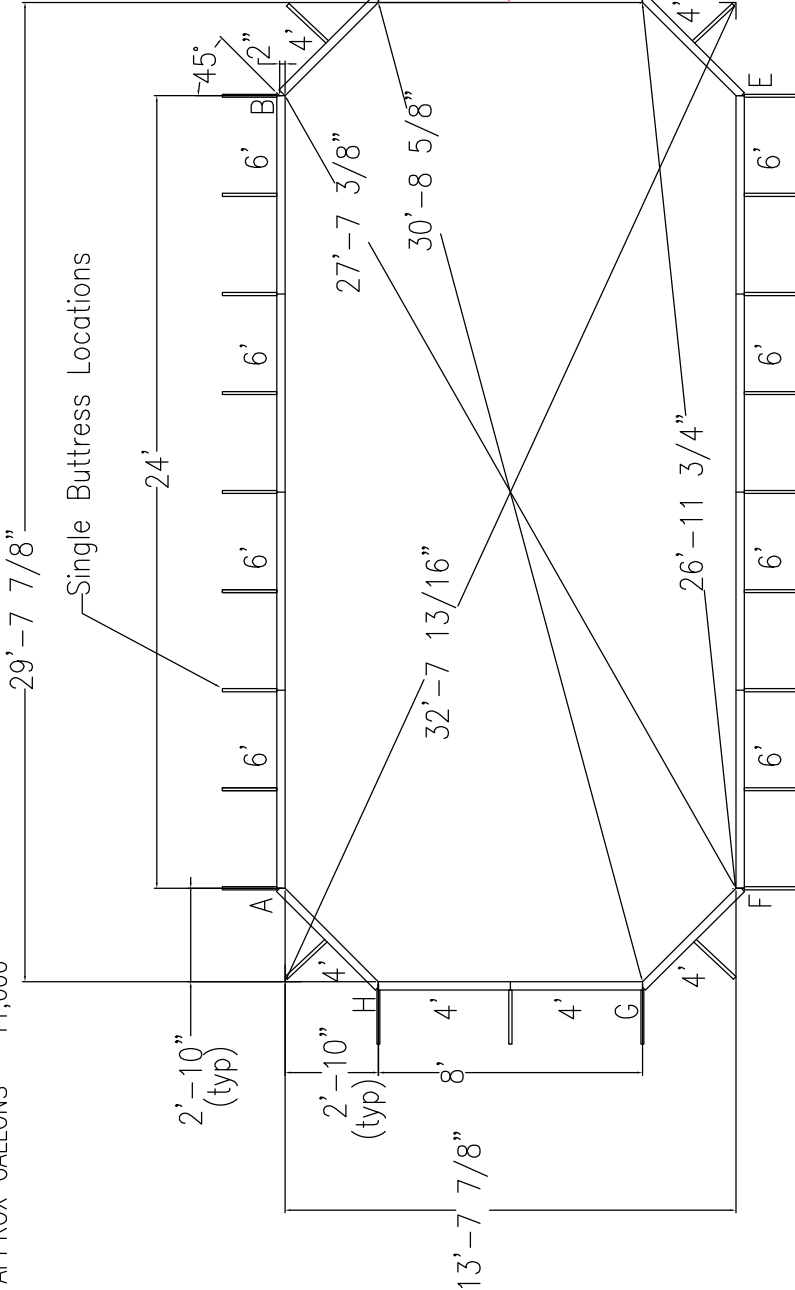
NOTES;

1. ALL PANELS are 14 gauge, Powder-Coated Steel
2. Pool Walls should always be installed on virgin soil or compacted base material.
3. Buttresses are located at each joint along each side wall.
4. No Diving Board allowed! NOT Safe for diving!
5. IF USING BENDABLE BULLNOSE COPING ADD 3-1/8" TO DIG DEPTH. BEAD TO FINISH WILL STAY THE SAME.
6. INSTALLATION TO BE IN ACCORDANCE WITH FOX POOL RECOMMENDATIONS

TITLE	1430 ULTIMATE GRECIAN		
DATE	6/13/16	TYPE	0
DWG. NO.	09-20521R	SCALE	NONE
DRW. BY:	J.LANDES		

©ALL RIGHTS RESERVED

TRUE PERIMETER - 80'-0"
 SQFT SWIM AREA - 390
 APPROX GALLONS - 11,600



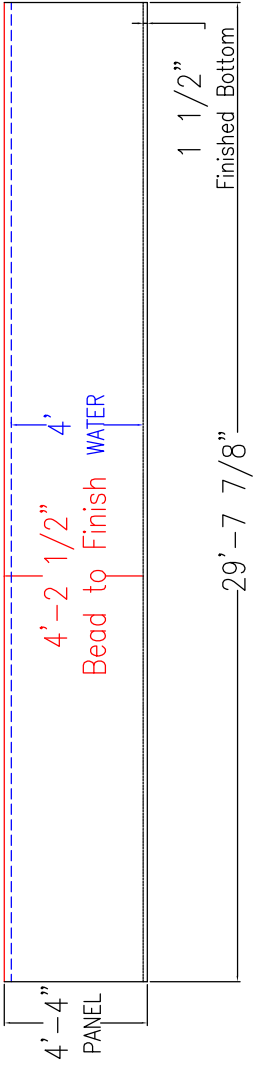
Seam Location

8' ULTIMATE STAIR

LNR PT# W2-1430G2
 SOLAR CVR PT# W20-100

DRAWING MUST BE APPROVED
 AND SIGNED BEFORE ORDER
 WILL BE PLACED FOR ALL
 SPECIAL ORDERS.

DEALER _____
 LINER CHOICE _____
 DATE _____
 CUSTOMER _____



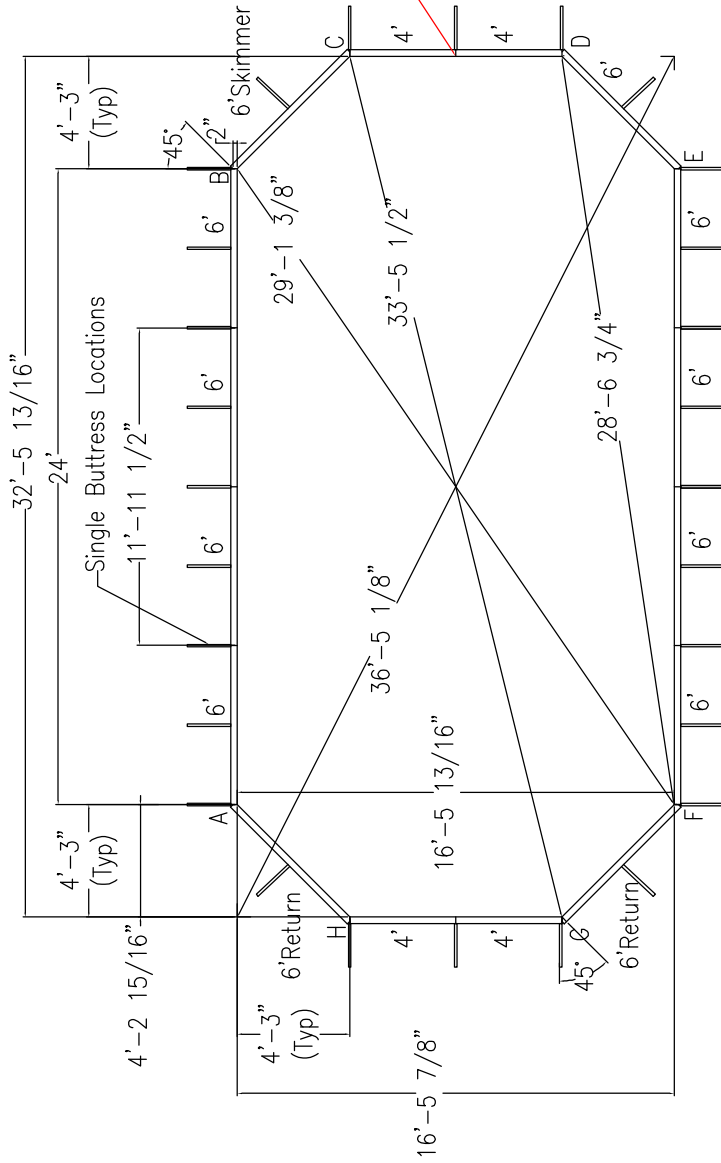
NOTES;

1. ALL PANELS are 14 gauge, Powder-Coated Steel
2. Pool Walls should always be installed on virgin soil or compacted base material.
3. Buttresses are located at each joint along each side wall.
4. No Diving Board allowed! NOT Safe for diving!
5. IF USING BENDABLE BULLNOSE COPING ADD 3-1/8" TO DIG DEPTH. BEAD TO FINISH WILL STAY THE SAME.
6. INSTALLATION TO BE IN ACCORDANCE WITH FOX POOL RECOMMENDATIONS

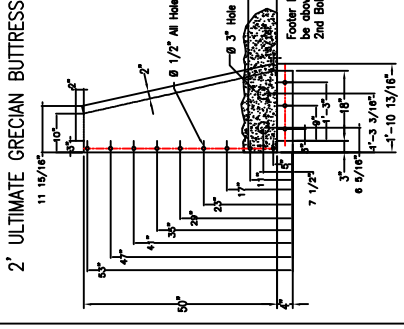
TITLE	1430 ULTIMATE GRECIAN		
DATE	6/13/16	TYPE	0
DWG. NO.	09-20521R	SCALE	NONE
DRW. BY:	J.LANDES		

©ALL RIGHTS RESERVED

TRUE PERIMETER - 88'-0"
 SQFT SWIM AREA - 500
 APPROX GALLONS - 14,900



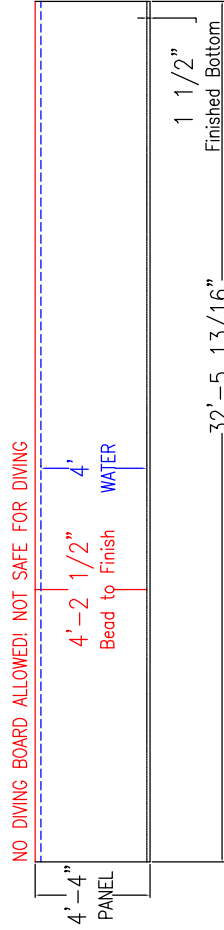
Seam Location for Liner



LINER PT# W2-1632G
 SNAP-IN CVR PT# W2-238
 SOLAR CVR PT# W20-102

DRAWING MUST BE APPROVED
 AND SIGNED BEFORE ORDER
 WILL BE PLACED FOR ALL
 SPECIAL ORDERS.

DEALER _____
 LINER CHOICE _____
 DATE _____
 CUSTOMER _____



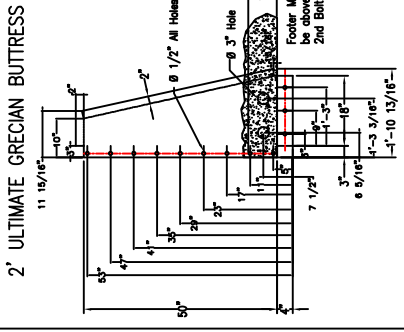
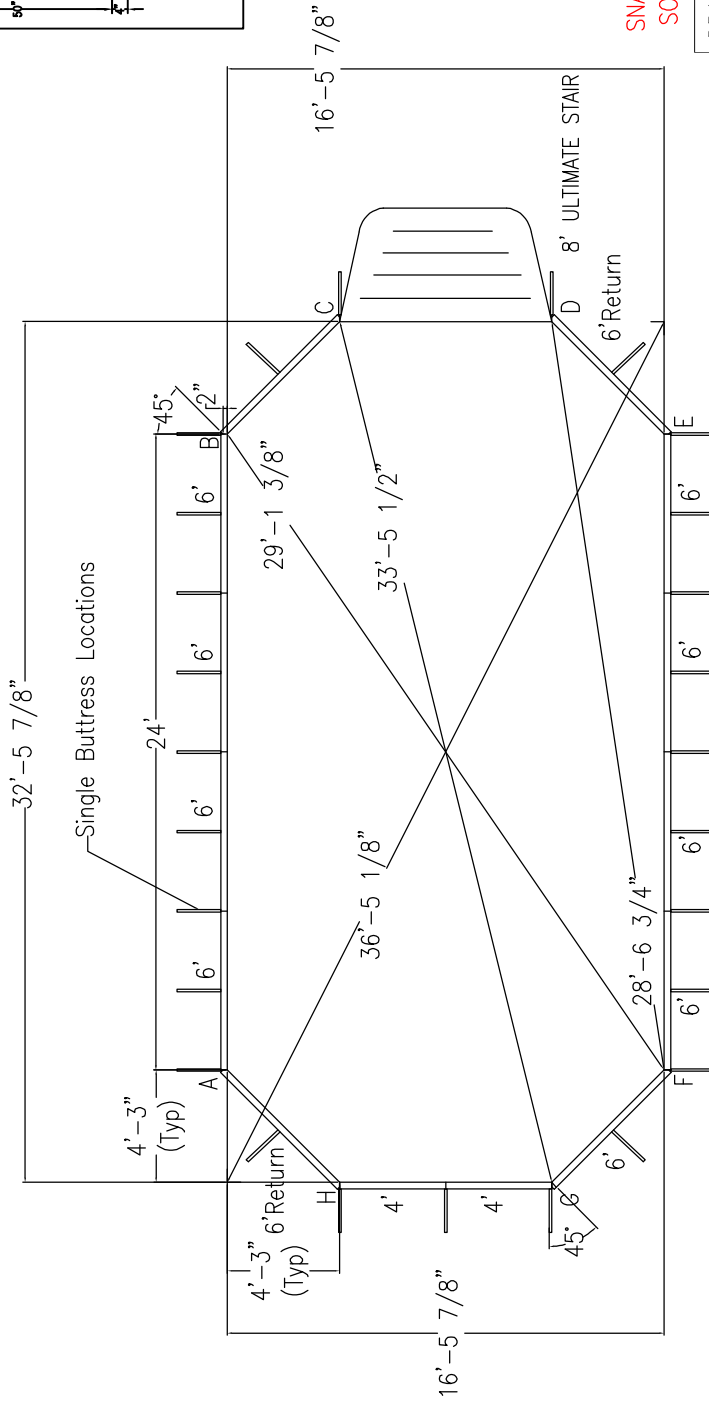
NOTES;

1. ALL PANELS are 14 gauge, Powder-Coated Steel
2. Pool Walls should always be installed on virgin soil or compacted base material.
3. Buttresses are located at each joint along each side wall.
4. **No Diving Board allowed! NOT Safe for diving!**
5. IF USING BENDABLE BULLNOSE COPING ADD 3-1/8" TO DIG DEPTH. BEAD TO FINISH WILL STAY THE SAME.
6. INSTALLATION TO BE IN ACCORDANCE WITH FOX POOL RECOMMENDATIONS

©ALL RIGHTS RESERVED

TITLE	1632 ULTIMATE GRECIAN
DATE	7/1/20
DWG. NO.	09-20520
DRW. BY	J. LANDES
TYPE	0
SCALE	NONE

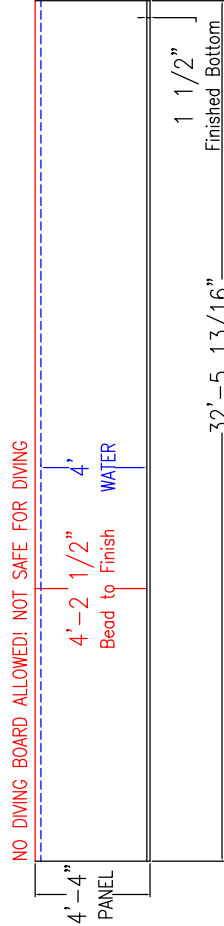
TRUE PERIMETER - 88'-0"
 SQFT SWIM AREA - 500
 APPROX GALLONS - 14,900



LNR PT# W2-1632G
 SNAP-IN CVR PT# W2-238
 SOLAR CVR PT# W20-102

DRAWING MUST BE APPROVED
 AND SIGNED BEFORE ORDER
 WILL BE PLACED FOR ALL
 SPECIAL ORDERS.

DEALER _____
 LINER CHOICE _____
 DATE _____
 CUSTOMER _____



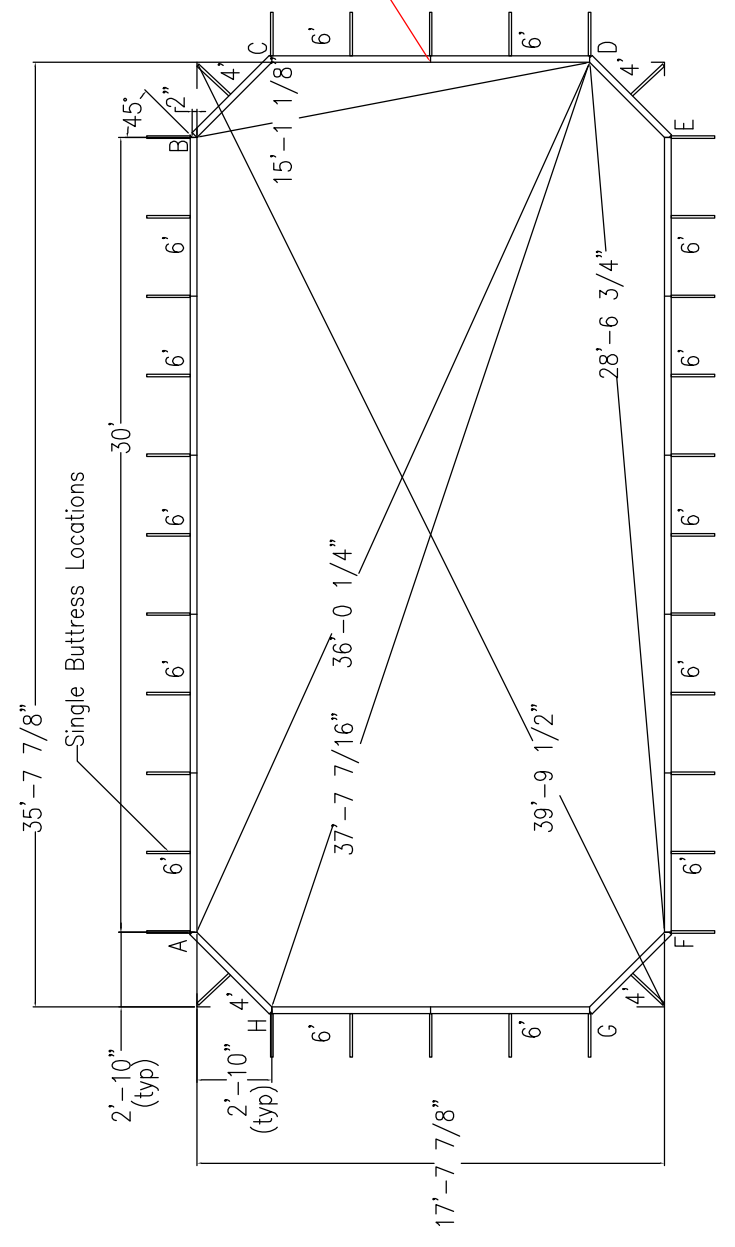
NOTES;

1. ALL PANELS are 14 gauge, Powder-Coated Steel
2. Pool Walls should always be installed on virgin soil or compacted base material.
3. Buttresses are located at each joint along each side wall.
4. **No Diving Board allowed! NOT Safe for diving!**
5. IF USING BENDABLE BULLNOSE COPING ADD 3-1/8" TO DIG DEPTH. BEAD TO FINISH WILL STAY THE SAME.
6. INSTALLATION TO BE IN ACCORDANCE WITH FOX POOL RECOMMENDATIONS

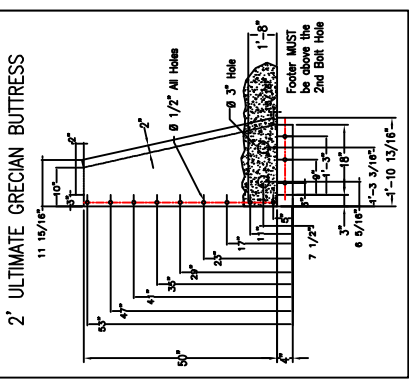
TITLE	1632 ULTIMATE GRECIAN
DATE	3/18/15
TYPE	0
DWG. NO.	09-20520
SCALE	NONE
DRW. BY	J.LANDES

©ALL RIGHTS RESERVED

TRUE PERIMETER - 100'-0"
 SQFT SWIM AREA - 614
 APPROX GALLONS - 18,200



Seam Location

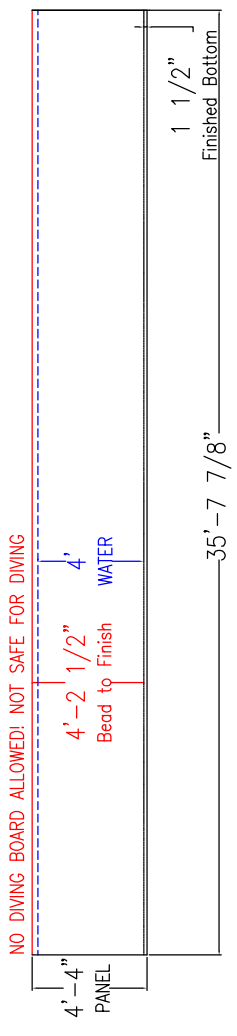


LNR PT# W2-1836G
 SNAP-IN CVR PT# W2-241
 SOLAR CVR PT# W20-106

DRAWING MUST BE APPROVED
 AND SIGNED BEFORE ORDER
 WILL BE PLACED FOR ALL
 SPECIAL ORDERS.

DEALER _____
 LINER CHOICE _____
 DATE _____
 CUSTOMER _____

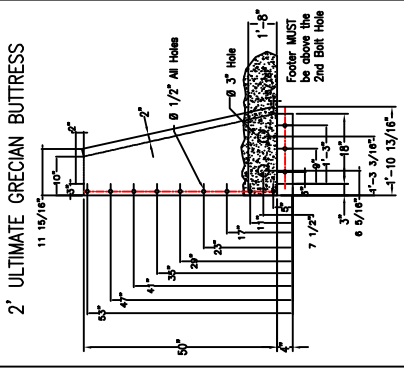
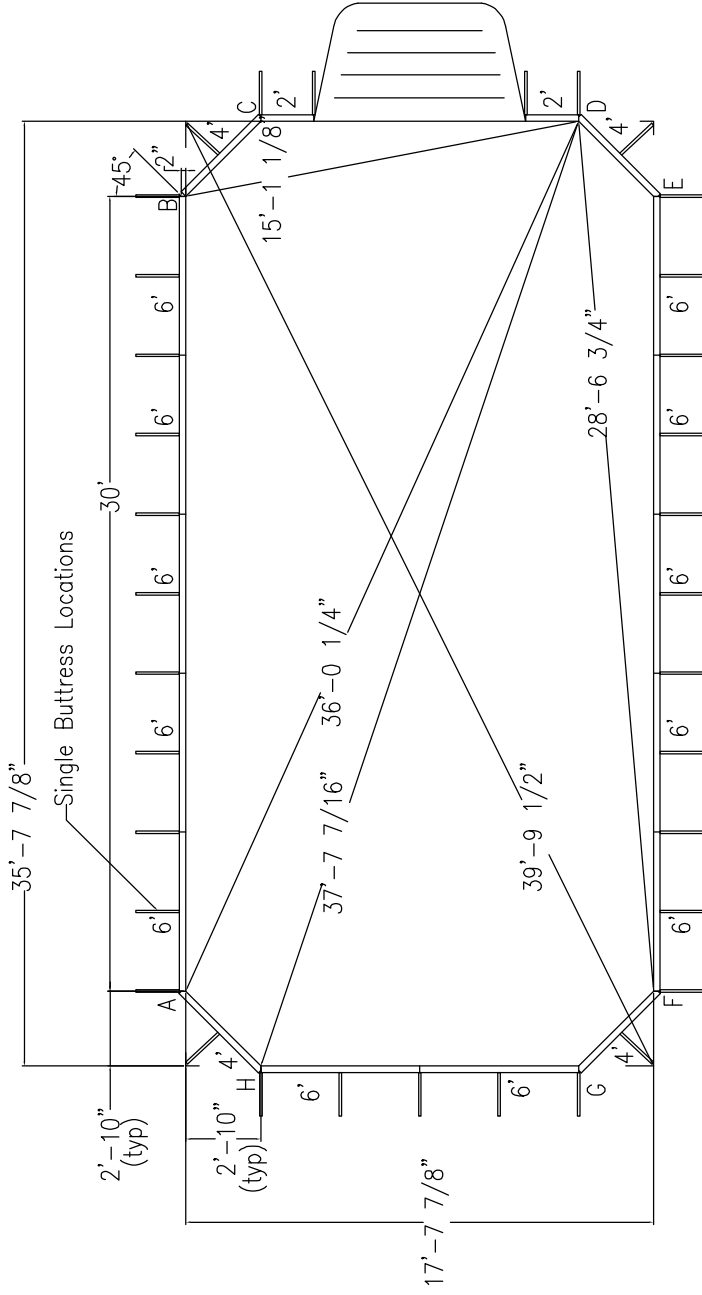
TITLE	1836 ULTIMATE GRECIAN
DATE	6/2/17
DWG. NO.	09-24474
DRW. BY	J.LANDES
TYPE	0
SCALE	NONE



- NOTES;
1. ALL PANELS are 14 gauge, Powder-Coated Steel
 2. Pool Walls should always be installed on virgin soil or compacted base material.
 3. Buttresses are located at each joint along each side wall.
 4. No Diving Board allowed! NOT Safe for diving!
 5. IF USING BENDABLE BULLNOSE COPING ADD 3'-1/8" TO DIG DEPTH. BEAD TO FINISH WILL STAY THE SAME.
 6. INSTALLATION TO BE IN ACCORDANCE WITH FOX POOL RECOMMENDATIONS

©ALL RIGHTS RESERVED

TRUE PERIMETER - 100'-0"
 SQFT SWIM AREA - 614
 APPROX GALLONS - 18,200

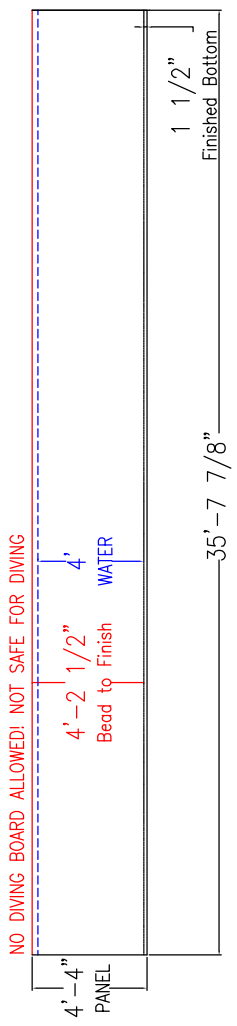


8' ULTIMATE STAIR

LNR PT# W2-1836G
 SNAP-IN CVR PT# W2-241
 SOLAR CVR PT# W20-106

DRAWING MUST BE APPROVED
 AND SIGNED BEFORE ORDER
 WILL BE PLACED FOR ALL
 SPECIAL ORDERS.

DEALER _____
 LINER CHOICE _____
 DATE _____
 CUSTOMER _____

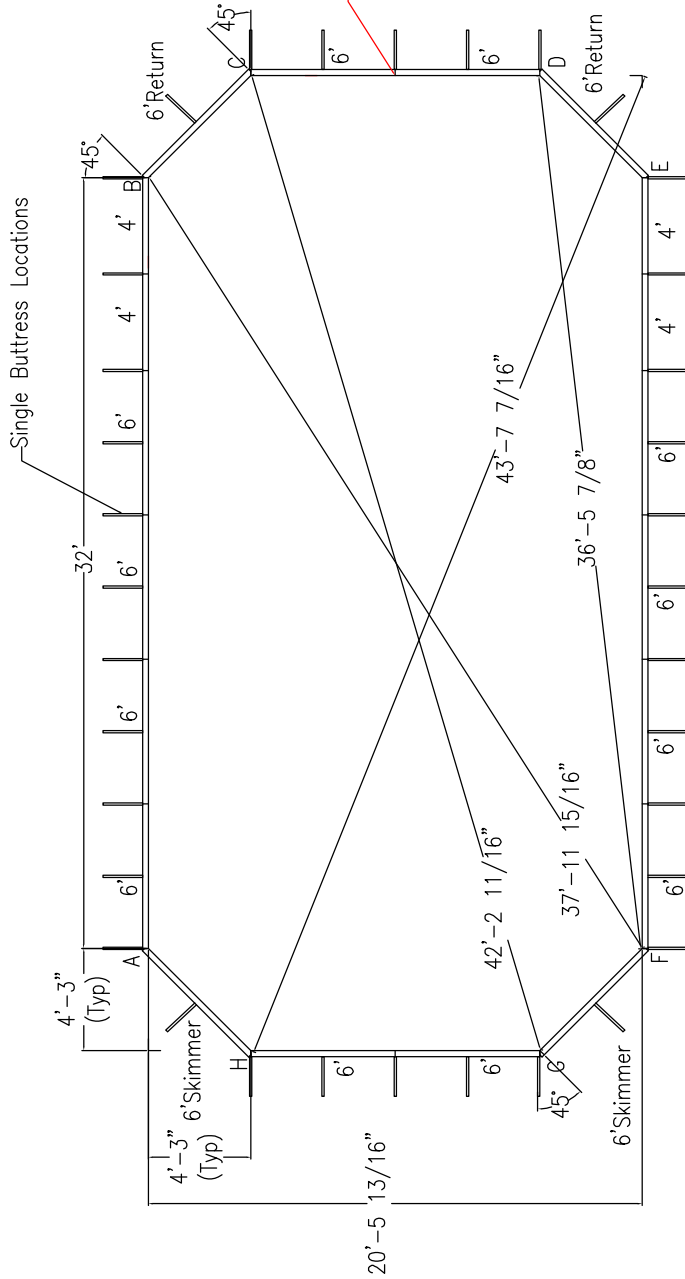


- NOTES;
1. ALL PANELS are 14 gauge, Powder-Coated Steel
 2. Pool Walls should always be installed on virgin soil or compacted base material.
 3. Buttresses are located at each joint along each side wall.
 4. No Diving Board allowed! NOT Safe for diving!
 5. IF USING BENDABLE BULLNOSE COPING ADD 3-1/8" TO DIG DEPTH. BEAD TO FINISH WILL STAY THE SAME.
 6. INSTALLATION TO BE IN ACCORDANCE WITH FOX POOL RECOMMENDATIONS

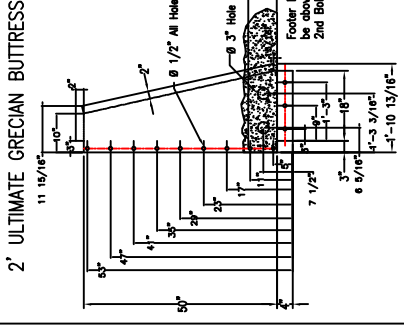
TITLE	1836 ULTIMATE GRECIAN
DATE	8/17/17
DWG. NO.	09-24931
DRW. BY.	J.LANDES
TYPE	0
SCALE	NONE

©ALL RIGHTS RESERVED

TRUE PERIMETER - 112'-0"
 SQFT SWIM AREA - 793
 APPROX GALLONS - 23,600



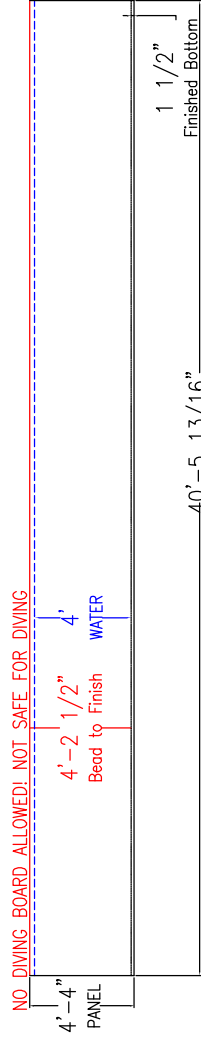
Seam Location



LNR PT# W2-2040G
 SNAP-IN CVR PT# W2-242
 SOLAR CVR PT# W20-107

DRAWING MUST BE APPROVED
 AND SIGNED BEFORE ORDER
 WILL BE PLACED FOR ALL
 SPECIAL ORDERS.

DEALER _____
 LINER CHOICE _____
 DATE _____
 CUSTOMER _____



NOTES;

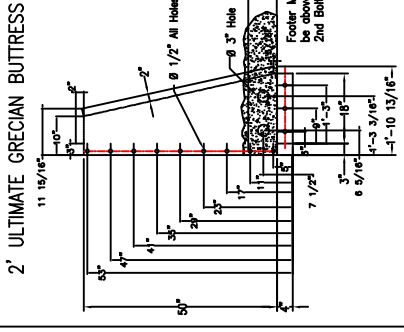
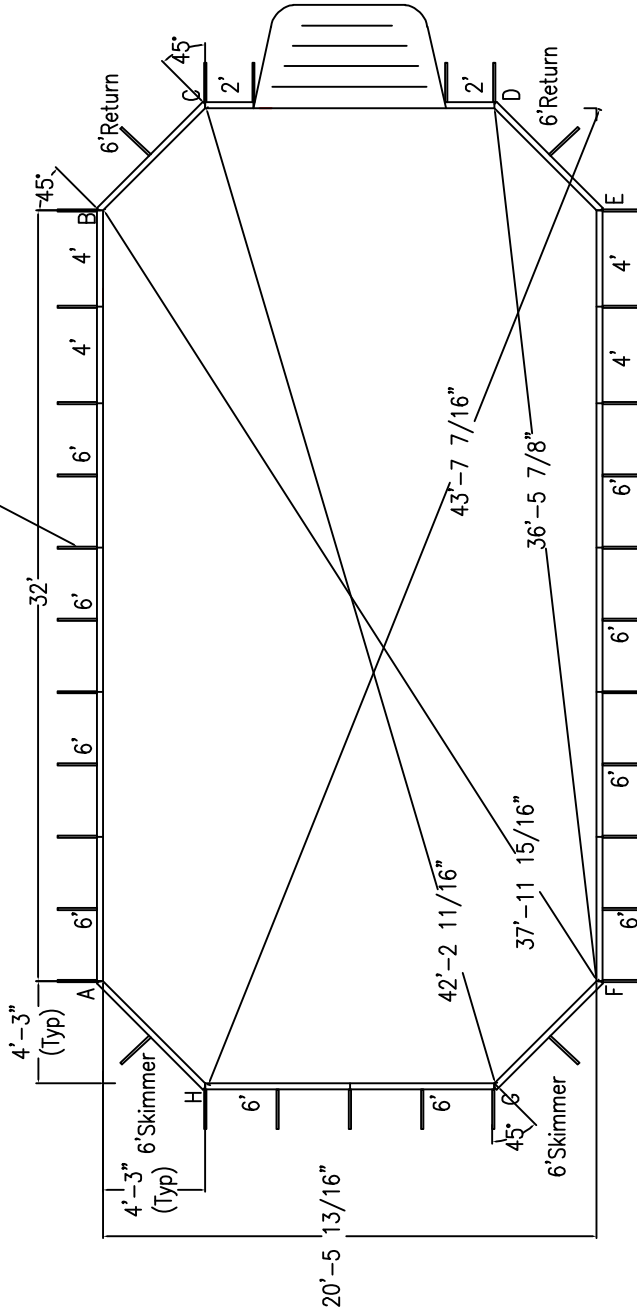
1. ALL PANELS are 14 gauge, Powder-Coated Steel
2. Pool Walls should always be installed on virgin soil or compacted base material.
3. Buttresses are located at each joint along each side wall.
4. **No Diving Board allowed! NOT Safe for diving!**
5. IF USING BENDABLE BULLNOSE COPING ADD 3-1/8" TO DIG DEPTH. BEAD TO FINISH WILL STAY THE SAME.
6. INSTALLATION TO BE IN ACCORDANCE WITH FOX POOL RECOMMENDATIONS

©ALL RIGHTS RESERVED

TITLE	2040 ULTIMATE GRECIAN		
DATE	4/6/17	TYPE	0
DWG. NO.	09-24105	SCALE	NONE
DRW. BY.	S.SHOCKNEY		

TRUE PERIMETER - 112'-0"
 SQFT SWIM AREA - 793
 APPROX GALLONS - 23,600

Single Buttrass Locations

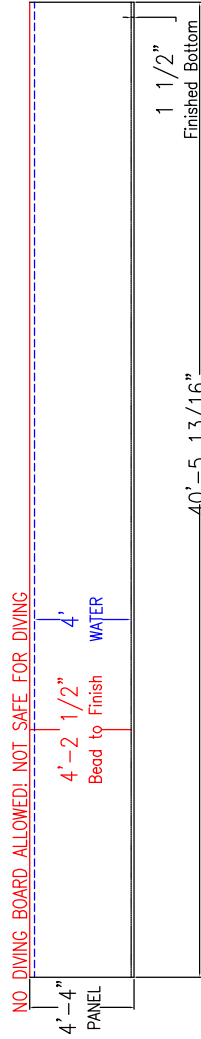


8' ULTIMATE STAIR

LNR PT# W2-2040G
 SNAP-IN CVR PT# W2-242
 SOLAR CVR PT# W20-107

DRAWING MUST BE APPROVED
 AND SIGNED BEFORE ORDER
 WILL BE PLACED FOR ALL
 SPECIAL ORDERS.

DEALER _____
 LINER CHOICE _____
 DATE _____
 CUSTOMER _____



NOTES;

1. ALL PANELS are 14 gauge, Powder-Coated Steel
2. Pool Walls should always be installed on virgin soil or compacted base material.
3. Buttrases are located at each joint along each side wall.
4. No Diving Board allowed! NOT Safe for diving!
5. IF USING BENDABLE BULLNOSE COPING ADD 3-1/8" TO DIG DEPTH. BEAD TO FINISH WILL STAY THE SAME.
6. INSTALLATION TO BE IN ACCORDANCE WITH FOX POOL RECOMMENDATIONS

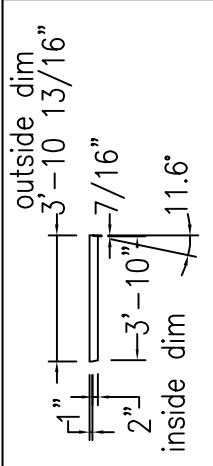
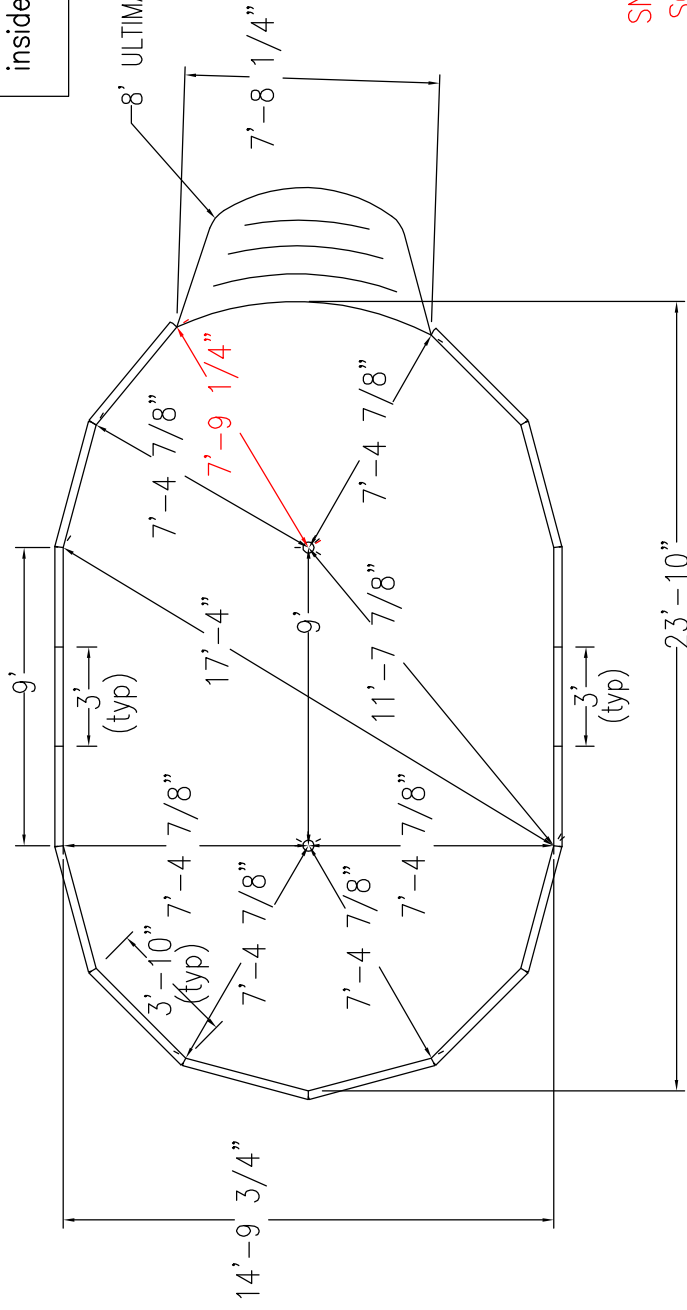
©ALL RIGHTS RESERVED

TITLE	2040 ULTIMATE GRECIAN	
DATE	1/21/19	TYPE 0
DWG. NO.	09-26755	SCALE NONE
DRW. BY.	J.LANDES	

THE ULTIMATE
OVAL
POOL DRAWINGS



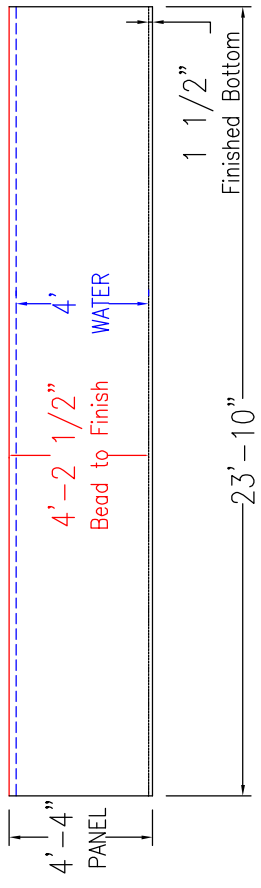
TRUE PERIMETER - 64'-3 1/2"
 SQFT SWIM AREA - 301
 APPROX GALLONS - 8,900



LNR PT# W2-29VS
 SNAP-IN CVR PT# W2-231
 SOLAR CVR PT# W20-103

DRAWING MUST BE APPROVED
 AND SIGNED BEFORE ORDER
 WILL BE PLACED FOR ALL
 SPECIAL ORDERS.

NO DIVING BOARD ALLOWED! NOT SAFE FOR DIVING



DEALER _____
 LINER CHOICE _____
 DATE _____
 CUSTOMER _____

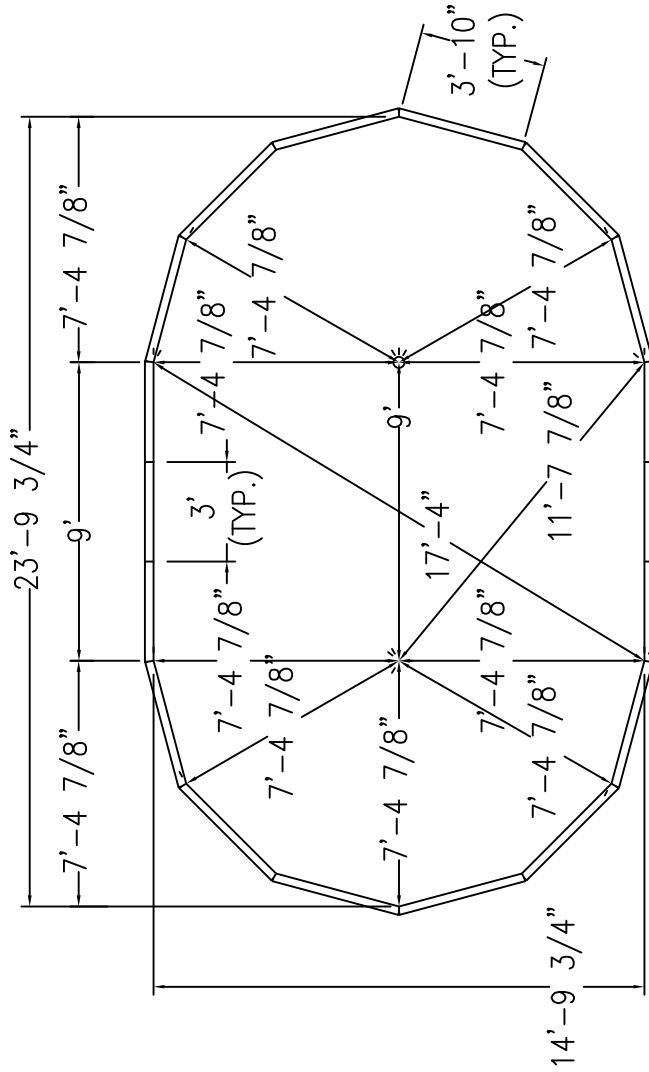
NOTES;

1. ALL PANELS are 14 gauge, Powder-Coated Steel
2. Pool Walls should always be installed on virgin soil or compacted base material.
3. Buttresses are located at each joint along each side wall.
4. No Diving Board allowed! NOT Safe for diving!
5. IF USING BENDABLE BULLNOSE COPING ADD 3-1/8" TO DIG DEPTH. BEAD TO FINISH WILL STAY THE SAME.
6. INSTALLATION TO BE IN ACCORDANCE WITH FOX POOL RECOMMENDATIONS

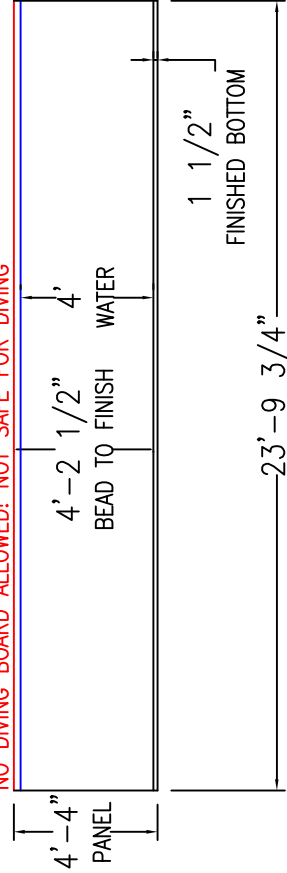
©ALL RIGHTS RESERVED

TITLE	1524 ULTIMATE OVAL	
DATE	3/2/20	TYPE 0
DWG. NO.	09-15385	SCALE NONE
DRW. BY	J.LANDES	

TRUE PERIMETER - 64'-3 1/2"
 SQFT SWIM AREA - 301
 APPROX GALLONS - 8,900

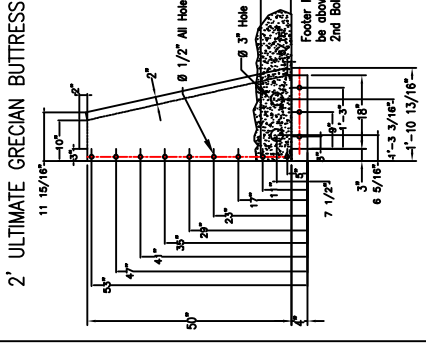


NO DIVING BOARD ALLOWED! NOT SAFE FOR DIVING



NOTES:

1. ALL PANELS ARE 14 GAUGE, POWDER-COATED STEEL
2. POOL WALLS SHOULD ALWAYS BE INSTALLED ON VIRGIN SOIL OR COMPACTED BASE MATERIAL.
3. BUTTRESSES ARE LOCATED AT EACH JOINT ALONG EACH SIDE WALL.
4. **NO DIVING BOARD ALLOWED! NOT SAFE FOR DIVING!**
5. IF USING BENDABLE BULLNOSE COPING ADD 3-1/8" TO DIG DEPTH. BEAD TO FINISH WILL STAY THE SAME.
6. INSTALLATION TO BE IN ACCORDANCE WITH FOX POOL RECOMMENDATIONS

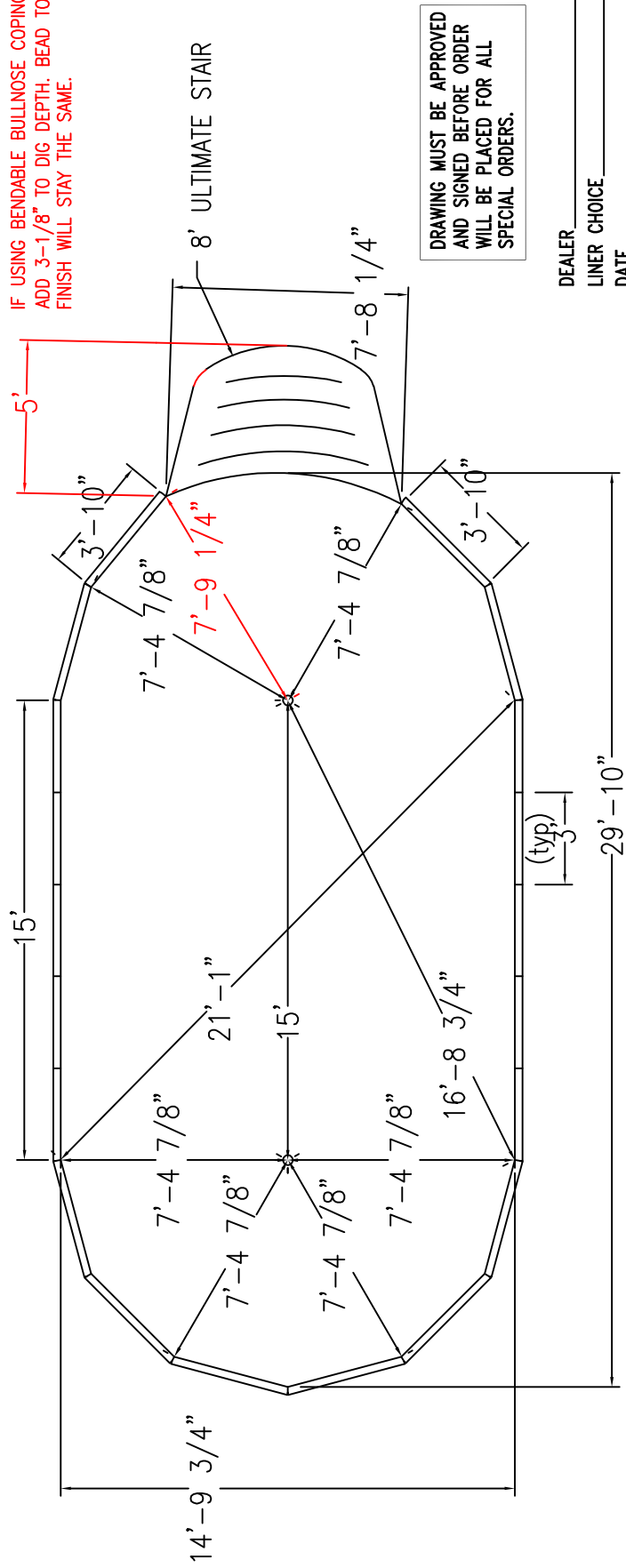


TITLE	1524 ULTIMATE OVAL
DATE	1/17/25
DWG. NO.	02-1235R
DRW. BY.	S.SHOCKNEY
TYPE	0
SCALE	NONE

© ALL RIGHTS RESERVED

ENGINEERED TO BE INSTALLED
SEMI-INGROUND OR INGROUND

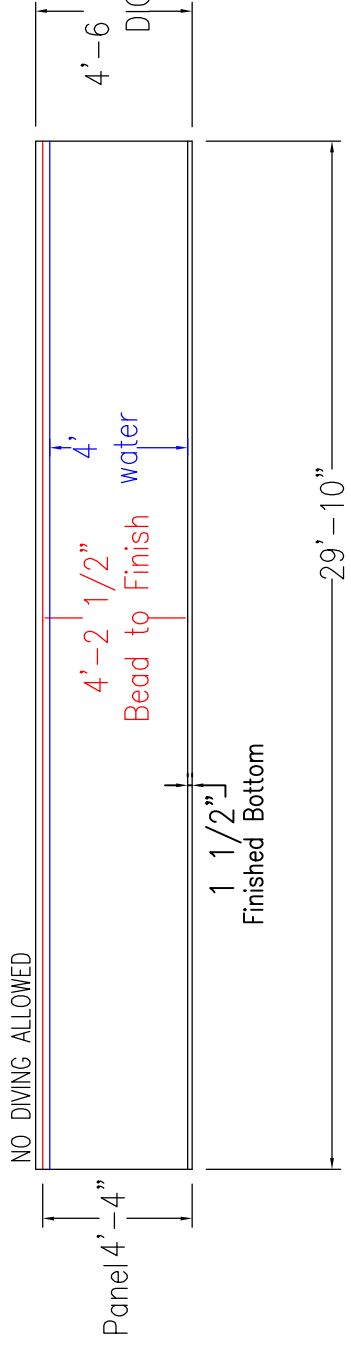
TRUE PERIMETER - 76'
SQFT SWIM AREA - 389
APPROX GALLONS - 11,600



DEALER _____
LINER CHOICE _____
DATE _____
CUSTOMER _____

LNR PT# W2-30VS
SNAP-IN CVR PT# W2-233
SOLAR CVR PT# W20-100

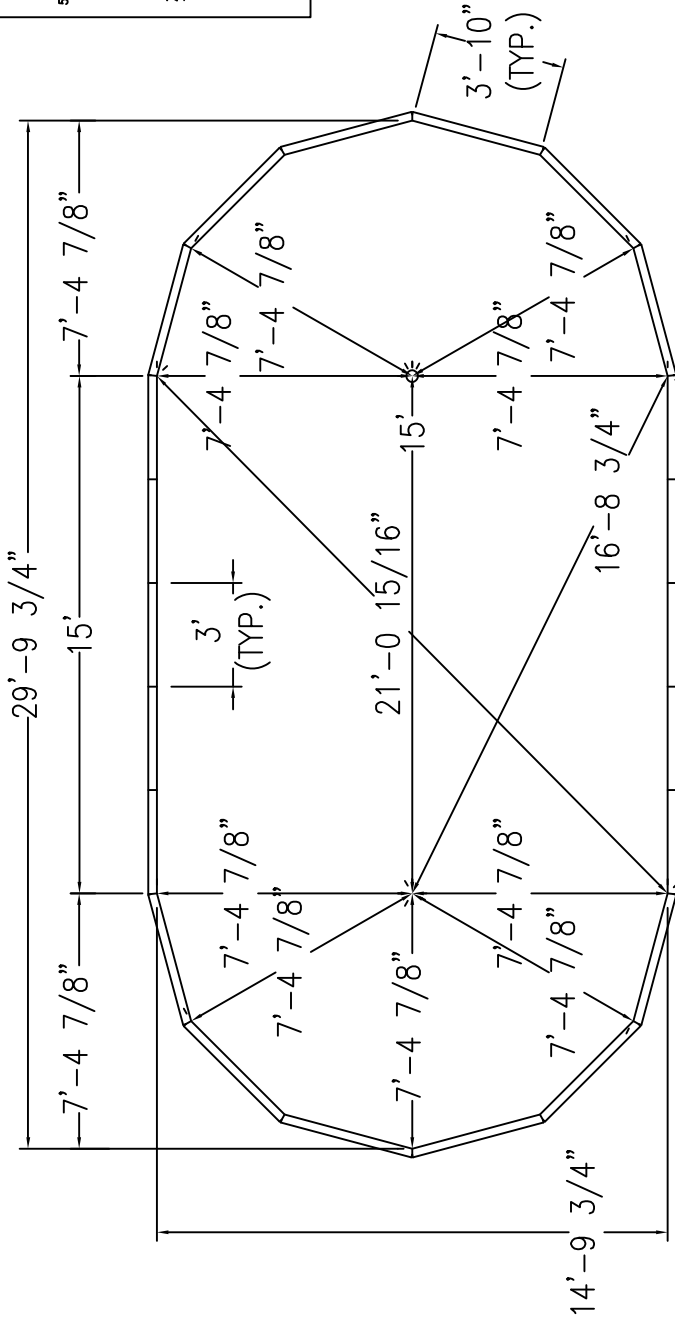
INSTALLATION TO BE IN ACCORDANCE WITH
FOX POOL RECOMMENDATIONS



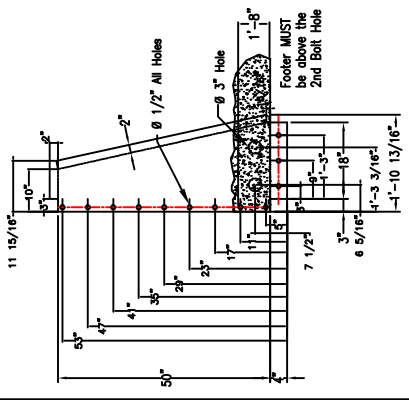
TITLE	1530 ULTIMATE OVAL
DATE	10/7/14
DWG. NO.	09-15228
DWG. BY	J.LANDES
TYPE	0
SCALE	NONE

© ALL RIGHTS RESERVED

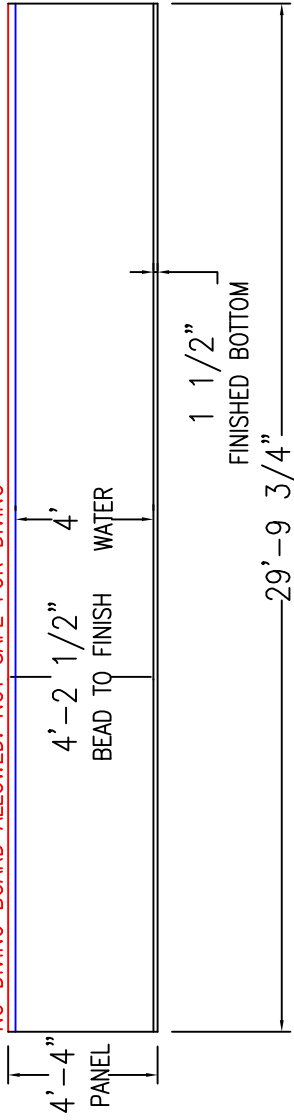
TRUE PERIMETER - 76'
 SQFT SWIM AREA - 387
 APPROX GALLONS - 11,500



2' ULTIMATE GRECIAN BUTTRISS



NO DIVING BOARD ALLOWED! NOT SAFE FOR DIVING



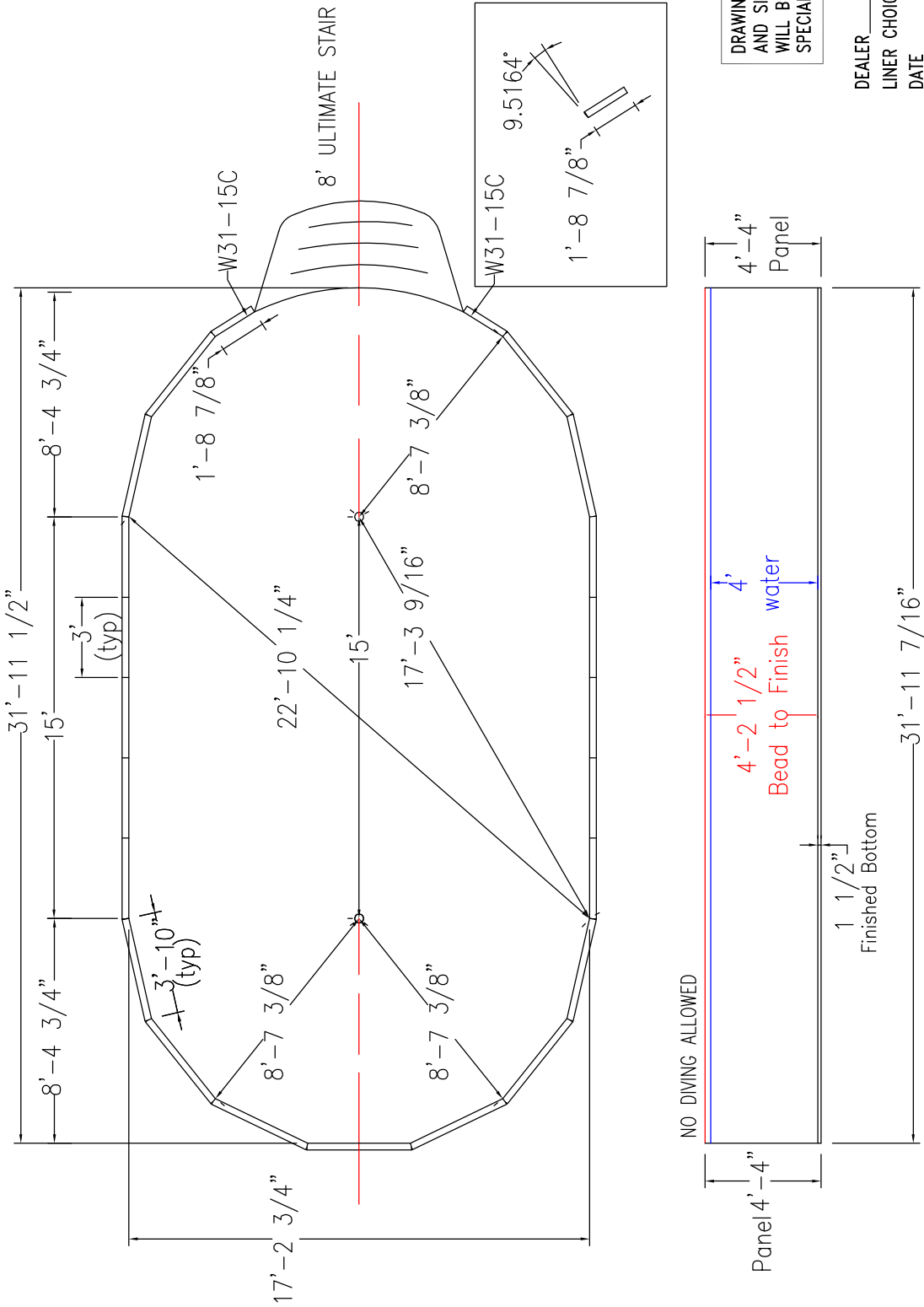
- NOTES:
1. ALL PANELS ARE 14 GAUGE, POWDER-COATED STEEL
 2. POOL WALLS SHOULD ALWAYS BE INSTALLED ON VIRGIN SOIL OR COMPACTED BASE MATERIAL.
 3. BUTTRISSES ARE LOCATED AT EACH JOINT ALONG EACH SIDE WALL.
 4. NO DIVING BOARD ALLOWED! NOT SAFE FOR DIVING!
 5. IF USING BENDABLE BULLNOSE COPING ADD 3-1/8" TO DIG DEPTH. BEAD TO FINISH WILL STAY THE SAME.
 6. INSTALLATION TO BE IN ACCORDANCE WITH FOX POOL RECOMMENDATIONS

TITLE	FOX POOL		
DATE	1530 ULTIMATE OVAL	TYPE	0
DWG. NO.	1/17/25	SCALE	NONE
DRW. BY:	S.SHOCKNEY		

©ALL RIGHTS RESERVED

TRUE PERIMETER - 83'-8 5/8"
 SQFT SWIM AREA - 485
 APPROX GALLONS - 14,500

LNR PT# W2-31VS
 SNAP-IN CVR PT# W2-235
 SOLAR CVR PT# W20-102



DRAWING MUST BE APPROVED
 AND SIGNED BEFORE ORDER
 WILL BE PLACED FOR ALL
 SPECIAL ORDERS.

DEALER _____
 LINER CHOICE _____
 DATE _____
 CUSTOMER _____

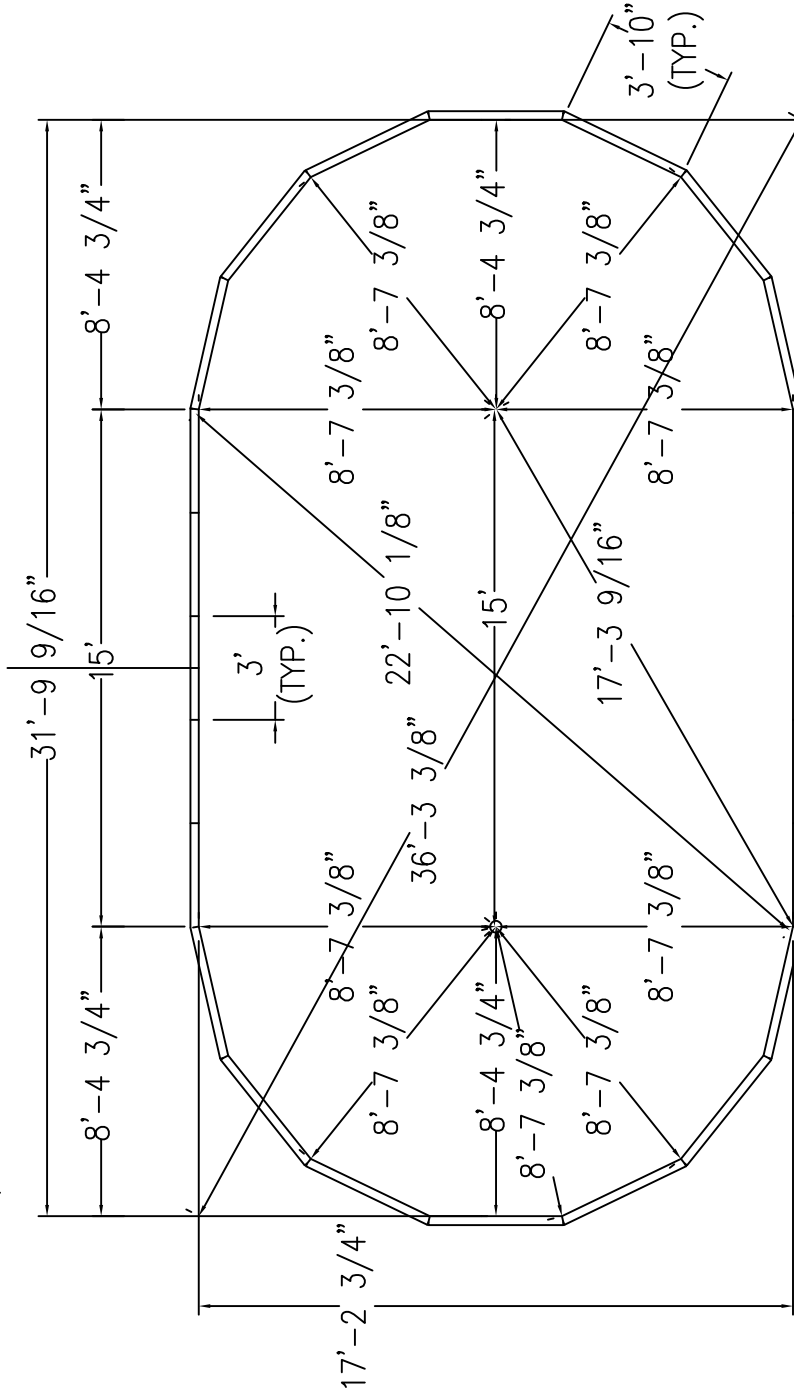
TITLE	1732 ULTIMATE OVAL
DATE	9/3/20
TYPE	0
FIG. NO.	09-15135
SCALE	NONE
DRG. BY	J.LANDES

NOTES:

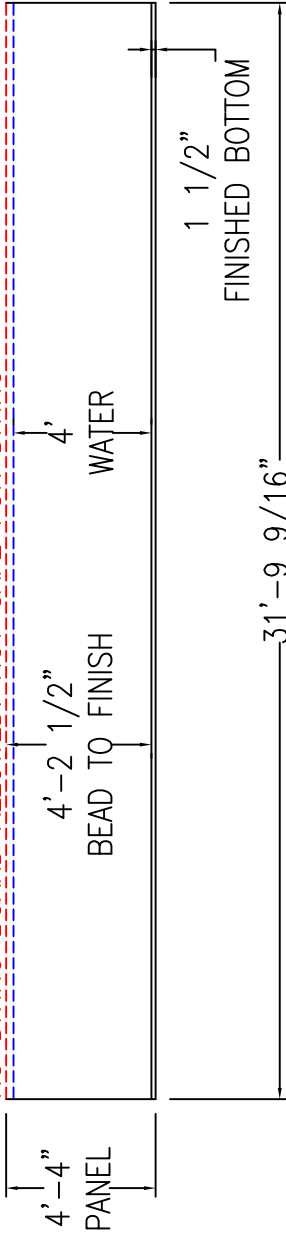
1. ALL PANELS are 14 gauge, Powder-Coated Steel
2. Pool Walls should always be installed on virgin soil or compacted base material.
3. Buttresses are located at each joint along each side wall.
4. No Diving Board allowed! NOT Safe for diving!
5. IF USING BENDABLE BULLNOSE COPING ADD 3'-1/8" TO DIG DEPTH. BEAD TO FINISH WILL STAY THE SAME.
6. INSTALLATION TO BE IN ACCORDANCE WITH FOX POOL RECOMMENDATIONS

© ALL RIGHTS RESERVED

TRUE PERIMETER - 83'-8"
 SQFT SWIM AREA - 484
 APPROX GALLONS - 14,500



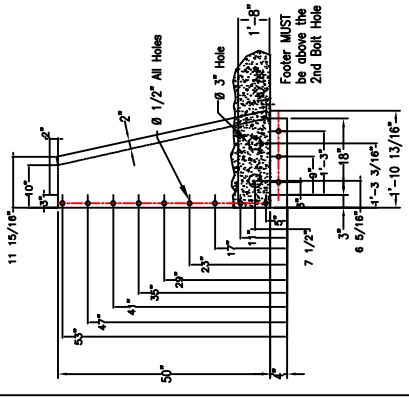
NO DIVING BOARD ALLOWED! NOT SAFE FOR DIVING



NOTES:

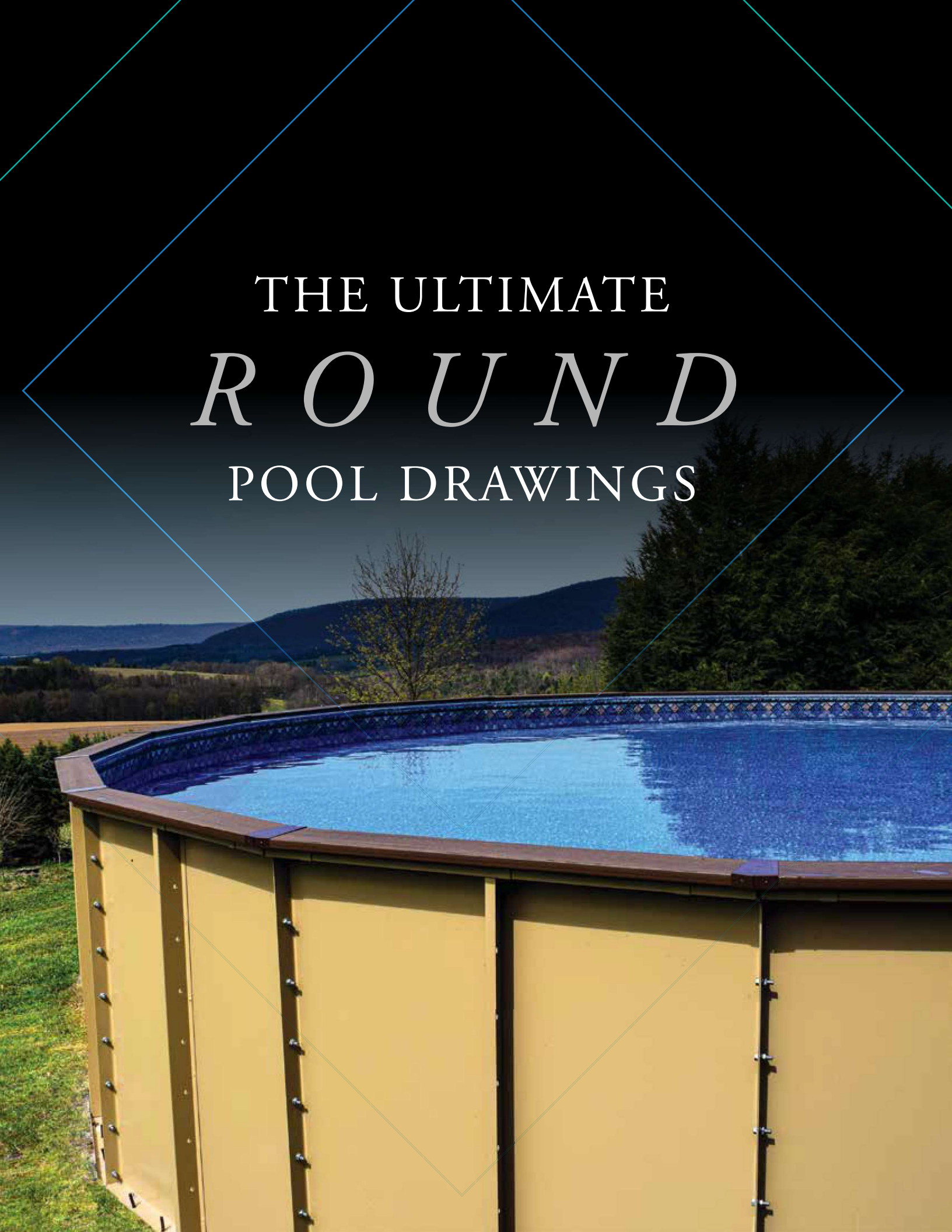
1. ALL PANELS ARE 14 GAUGE, POWDER-COATED STEEL
2. POOL WALLS SHOULD ALWAYS BE INSTALLED ON VIRGIN SOIL OR COMPACTED BASE MATERIAL.
3. BUTTRESSES ARE LOCATED AT EACH JOINT ALONG EACH SIDE WALL.
4. **NO DIVING BOARD ALLOWED! NOT SAFE FOR DIVING!**
5. IF USING BENDABLE BULLNOSE COPING ADD 3-1/8" TO DIG DEPTH. BEAD TO FINISH WILL STAY THE SAME.
6. INSTALLATION TO BE IN ACCORDANCE WITH FOX POOL RECOMMENDATIONS

2' ULTIMATE GRECIAN BUTTRESS

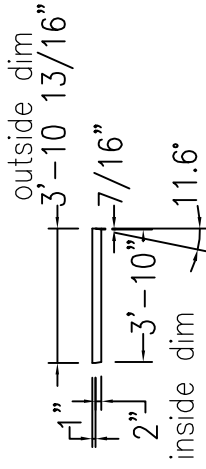


TITLE	FOX POOL		
DATE	1732 ULTIMATE OVAL	TYPE	0
DWG. NO.	1/17/25	SCALE	NONE
DRY. BY:	S. SHOCKNEY		

THE ULTIMATE
R O U N D
POOL DRAWINGS

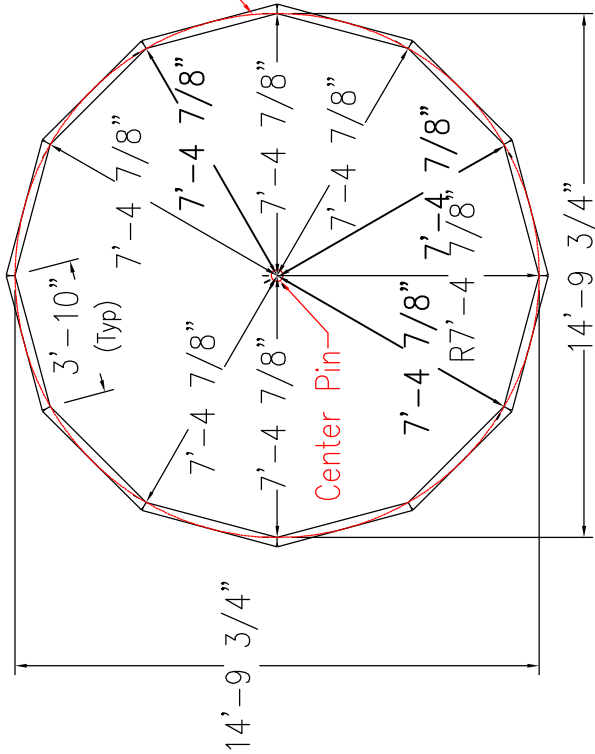


TRUE PERIMETER - 46'-0"
 SQFT SWIM AREA - 165
 APPROX GALLONS - 4,900



Center Pin Radius = 7'-4 7/8"

Panel joints will fall on the Radius,
 NOT the middle of the panel

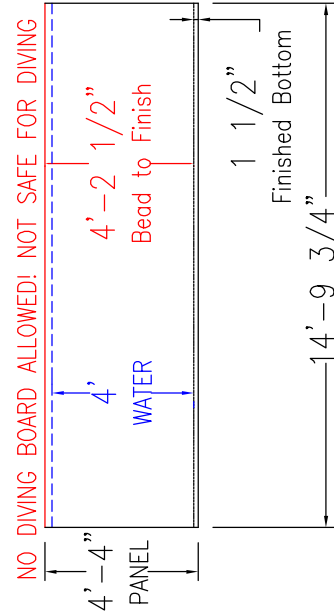


LNR PT# W2-115R
 SNAP-IN CVR PT# W2-214
 SOLAR CVR PT# W20-80

DRAWING MUST BE APPROVED
 AND SIGNED BEFORE ORDER
 WILL BE PLACED FOR ALL
 SPECIAL ORDERS.

DEALER _____
 LINER CHOICE _____
 DATE _____
 CUSTOMER _____

TITLE	15' ROUND ULTIMATE
DATE	11/6/20
TYPE	0
ENG. NO.	02-1289
SCALE	NONE
DRW. BY	J.LANDES



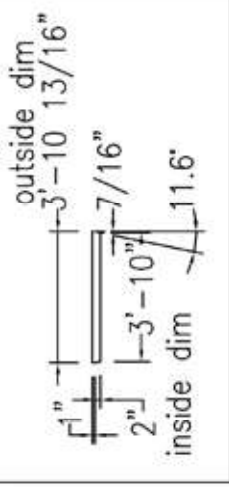
NO DIVING BOARD ALLOWED! NOT SAFE FOR DIVING

NOTES;

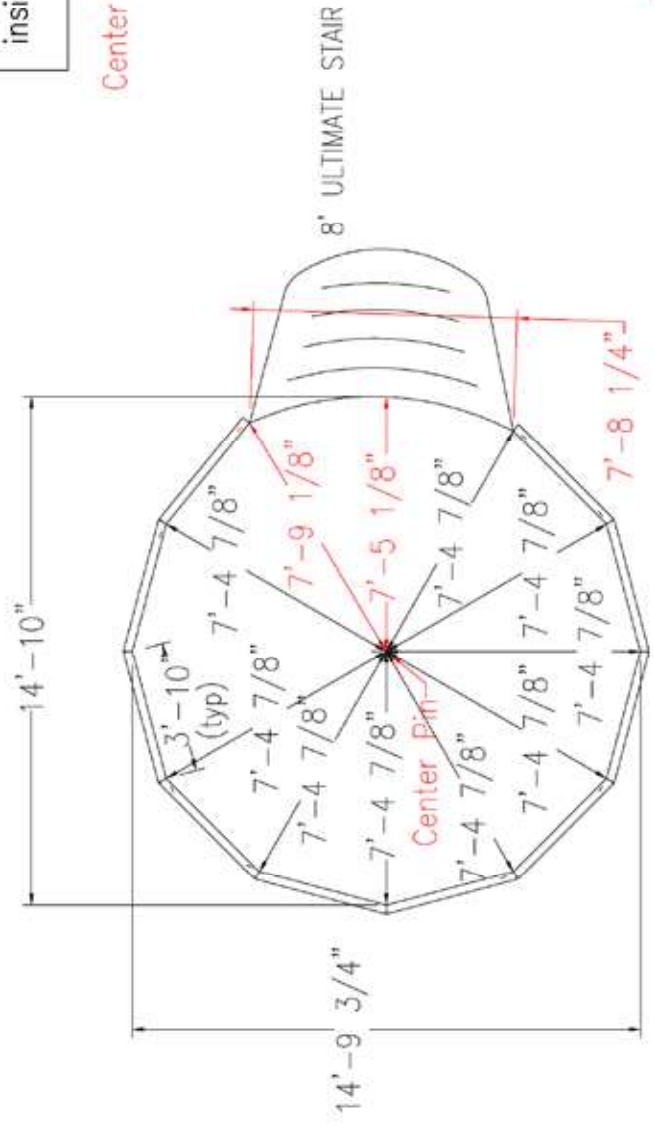
1. ALL PANELS are 14 gauge, Powder-Coated Steel
2. Pool Walls should always be installed on virgin soil or compacted base material.
3. Buttresses are located at each joint along each side wall.
4. **No Diving Board allowed! NOT Safe for diving!**
5. IF USING BENDABLE BULLNOSE COPING ADD 3-1/8" TO DIG DEPTH. BEAD TO FINISH WILL STAY THE SAME.
6. INSTALLATION TO BE IN ACCORDANCE WITH FOX POOL RECOMMENDATIONS

©ALL RIGHTS RESERVED

TRUE PERIMETER - 46'-3 1/2"
 SQFT SWIM AREA - 168
 APPROX GALLONS - 5,000



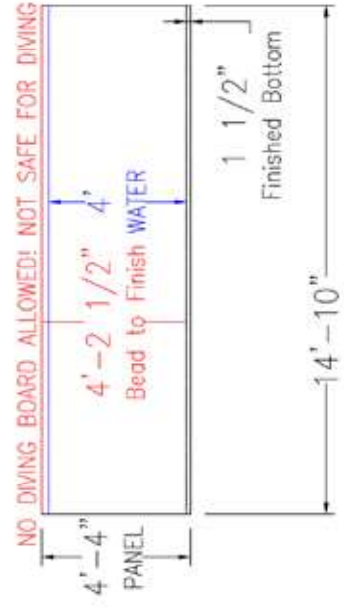
Center Pin Radius = 7'-4 7/8"



LNK PT# W2-15RS
 SNAP-IN CVR PT# W2-214
 SOLAR CVR PT# W20-80

DRAWING MUST BE APPROVED AND SIGNED BEFORE ORDER WILL BE PLACED FOR ALL SPECIAL ORDERS.

DEALER _____
 LINER CHOICE _____
 DATE _____
 CUSTOMER _____



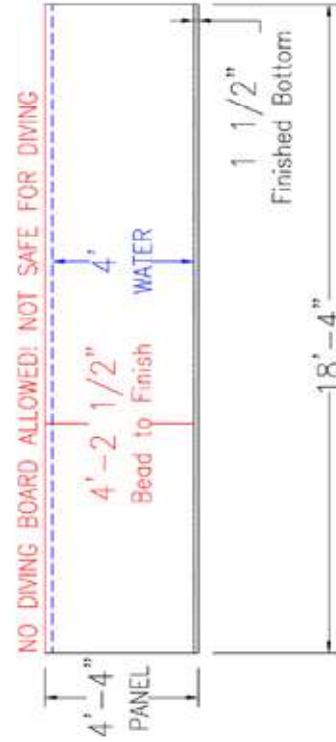
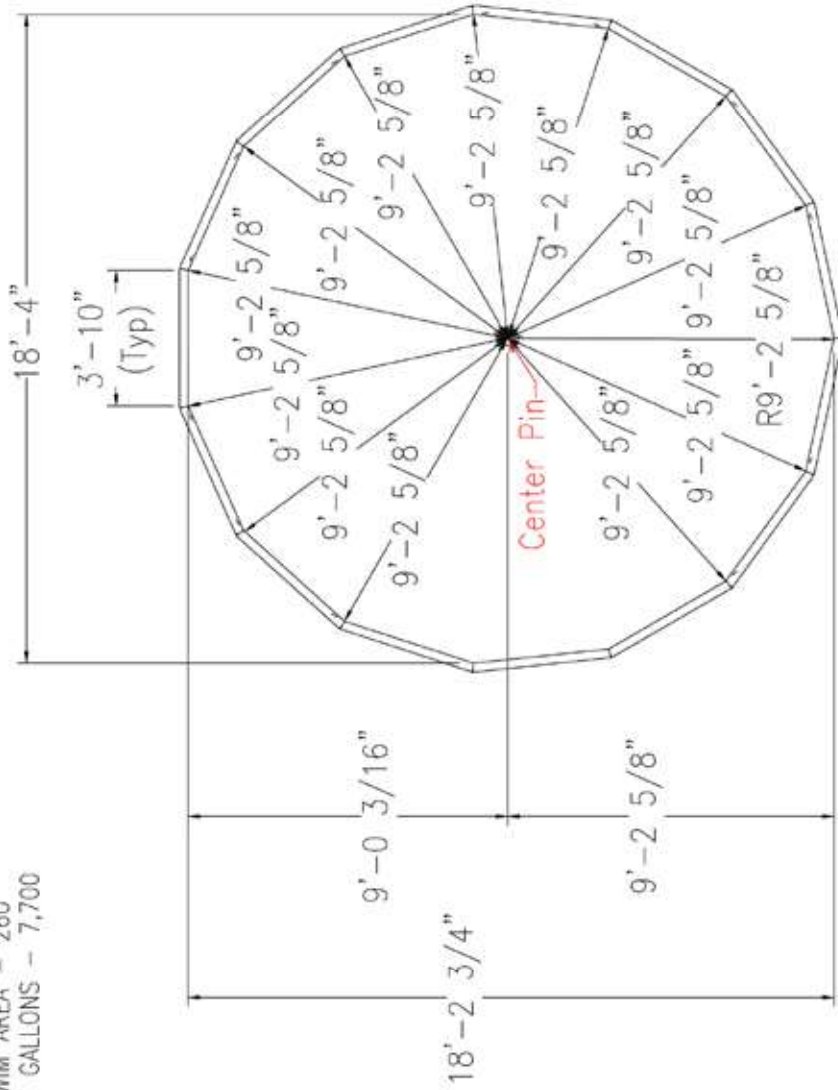
NOTES:

1. ALL PANELS are 14 gauge, Powder-Coated Steel
2. Pool Walls should always be installed on virgin soil or compacted base material.
3. Buttresses are located at each joint along each side wall.
4. No Diving Board allowed! NOT Safe for diving!
5. IF USING BENDABLE BULLNOSE COPING ADD 3-1/8" TO DIG DEPTH. BEAD TO FINISH WILL STAY THE SAME.
6. INSTALLATION TO BE IN ACCORDANCE WITH FOX POOL RECOMMENDATIONS

©ALL RIGHTS RESERVED

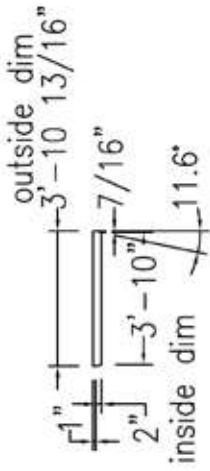
TITLE	15' ROUND ULTIMATE
DATE	11/6/20
DWG. NO.	09-18505
SCALE	NONE
BY	J.LANDES

TRUE PERIMETER - 57'-6"
 SQFT SWIM AREA - 260
 APPROX GALLONS - 7,700



NOTES:

1. ALL PANELS are 14 gauge, Powder-Coated Steel
2. Pool Walls should always be installed on virgin soil or compacted base material.
3. Buttresses are located at each joint along each side wall.
4. **No Diving Board allowed! NOT Safe for diving!**
5. IF USING BENDABLE BULLNOSE COPING ADD 3-1/8" TO DIG DEPTH. BEAD TO FINISH WILL STAY THE SAME.
6. INSTALLATION TO BE IN ACCORDANCE WITH FOX POOL RECOMMENDATIONS



Center Pin = 9'-2 5/8"

LNR PT# W2-118R
 SNAP-IN CVR PT# W2-218
 SOLAR CVR PT# W20-81

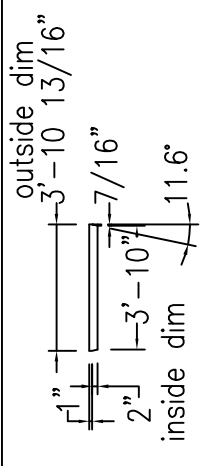
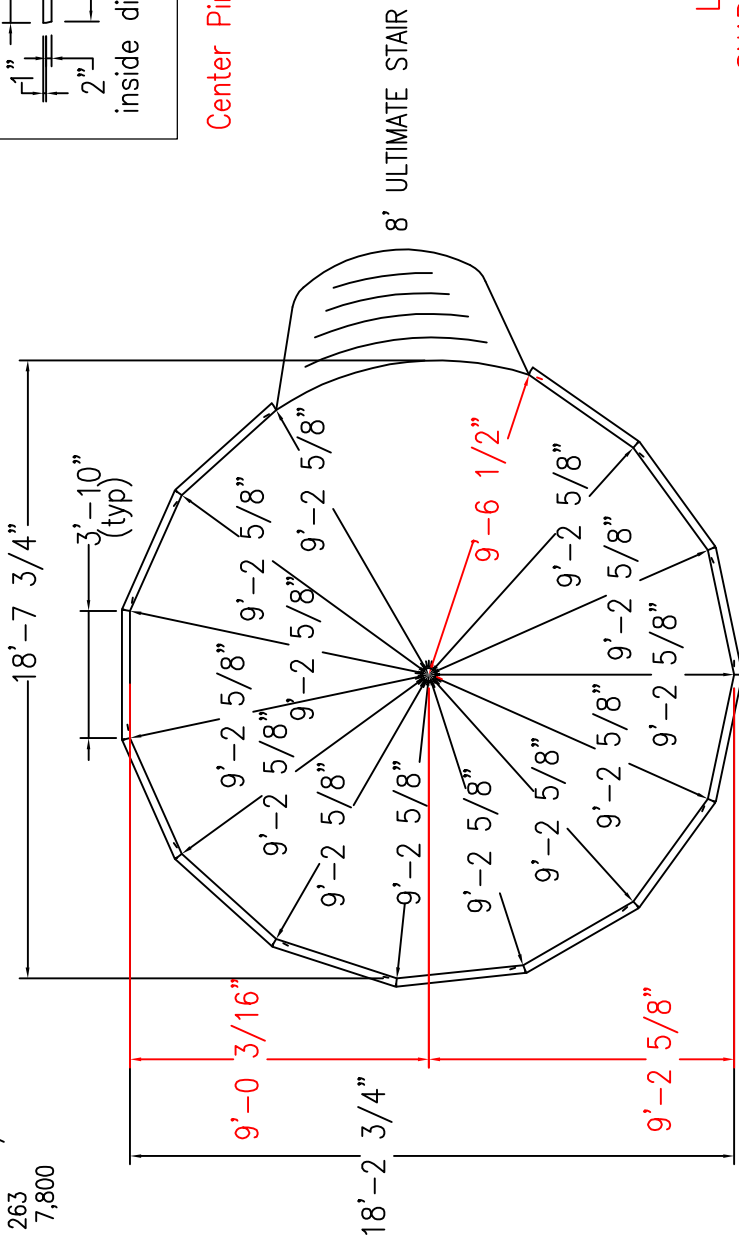
DRAWING MUST BE APPROVED
 AND SIGNED BEFORE ORDER
 WILL BE PLACED FOR ALL
 SPECIAL ORDERS.

DEALER _____
 LINER CHOICE _____
 DATE _____
 CUSTOMER _____

TITLE	18' ROUND ULTIMATE
DATE	9/28/20
DWG. NO.	02-1225
TYPE	0
SCALE	NONE
DRW. BY	JFLEISCHMAN

©ALL RIGHTS RESERVED

TRUE PERIMETER - 57'-9 3/4"
 SQFT SWIM AREA - 263
 APPROX GALLONS - 7,800



Center Pin = 9'-2 5/8"

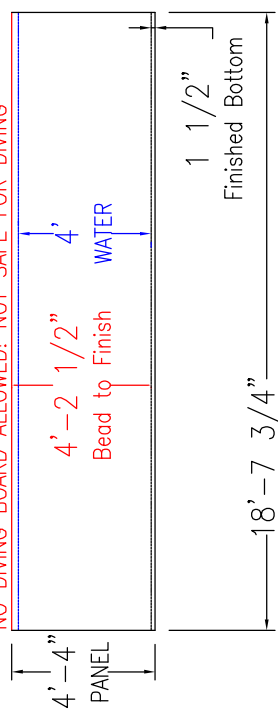
8' ULTIMATE STAIR

LNR PT# W2-18RS
 SNAP-IN CVR PT# W2-218
 SOLAR CVR PT# W20-81

DRAWING MUST BE APPROVED
 AND SIGNED BEFORE ORDER
 WILL BE PLACED FOR ALL
 SPECIAL ORDERS.

DEALER _____
 LINER CHOICE _____
 DATE _____
 CUSTOMER _____

NO DIVING BOARD ALLOWED! NOT SAFE FOR DIVING



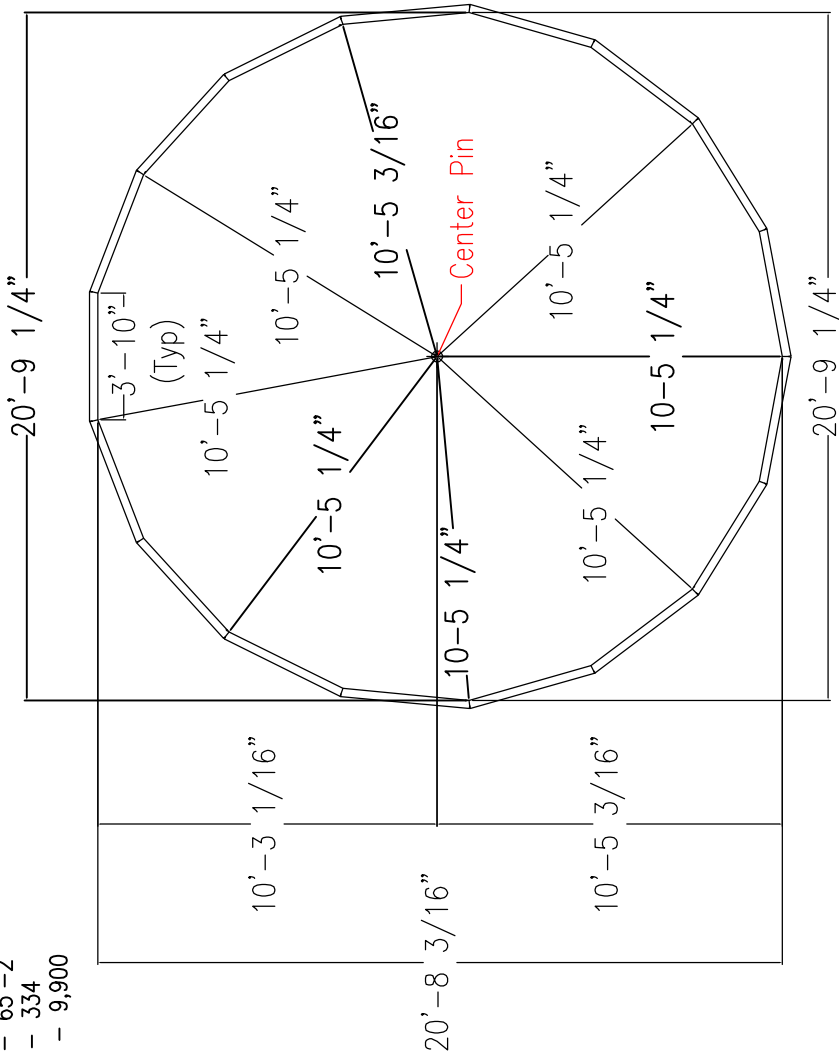
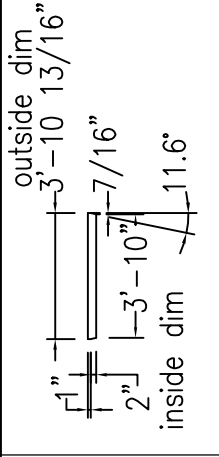
NOTES;

1. ALL PANELS are 14 gauge, Powder-Coated Steel
2. Pool Walls should always be installed on virgin soil or compacted base material.
3. Buttresses are located at each joint along each side wall.
4. No Diving Board allowed! NOT Safe for diving!
5. IF USING BENDABLE BULLNOSE COPING ADD 3-1/8" TO DIG DEPTH. BEAD TO FINISH WILL STAY THE SAME.
6. INSTALLATION TO BE IN ACCORDANCE WITH FOX POOL RECOMMENDATIONS

©ALL RIGHTS RESERVED

TITLE	18' ROUND ULTIMATE	
DATE	11/6/20	TYPE 0
DWG. NO.	09-14545	SCALE NONE
DRW. BY.	J.LANDES	

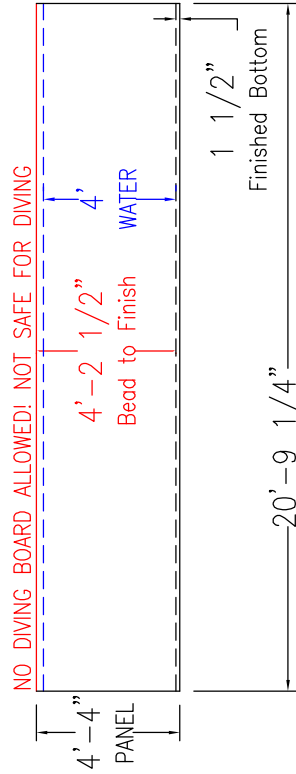
TRUE PERIMETER - 65'-2"
 SQFT SWIM AREA - 334
 APPROX GALLONS - 9,900



LNR PT# W2-121R
 SNAP-IN CVR PT# W2-216
 SOLAR CVR PT# W20-82

DRAWING MUST BE APPROVED
 AND SIGNED BEFORE ORDER
 WILL BE PLACED FOR ALL
 SPECIAL ORDERS.

DEALER _____
 LINER CHOICE _____
 DATE _____
 CUSTOMER _____



NO DIVING BOARD ALLOWED! NOT SAFE FOR DIVING

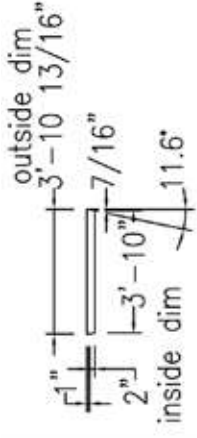
NOTES;

1. ALL PANELS are 14 gauge, Powder-Coated Steel
2. Pool Walls should always be installed on virgin soil or compacted base material.
3. Buttresses are located at each joint along each side wall.
4. No Diving Board allowed! NOT Safe for diving!
5. IF USING BENDABLE BULLNOSE COPING ADD 3-1/8" TO DIG DEPTH. BEAD TO FINISH WILL STAY THE SAME.
6. INSTALLATION TO BE IN ACCORDANCE WITH FOX POOL RECOMMENDATIONS

©ALL RIGHTS RESERVED

TITLE	21' ROUND ULTIMATE		
DATE	11/6/20	TYPE	0
DWG. NO.	02-1245	SCALE	NONE
DRW. BY.	J.LANDES		

TRUE PERIMETER - 65'-6"
 SQFT SWIM AREA - 338
 APPROX GALLONS - 10,000



CENTER PIN Radius 10'-5 3/16"

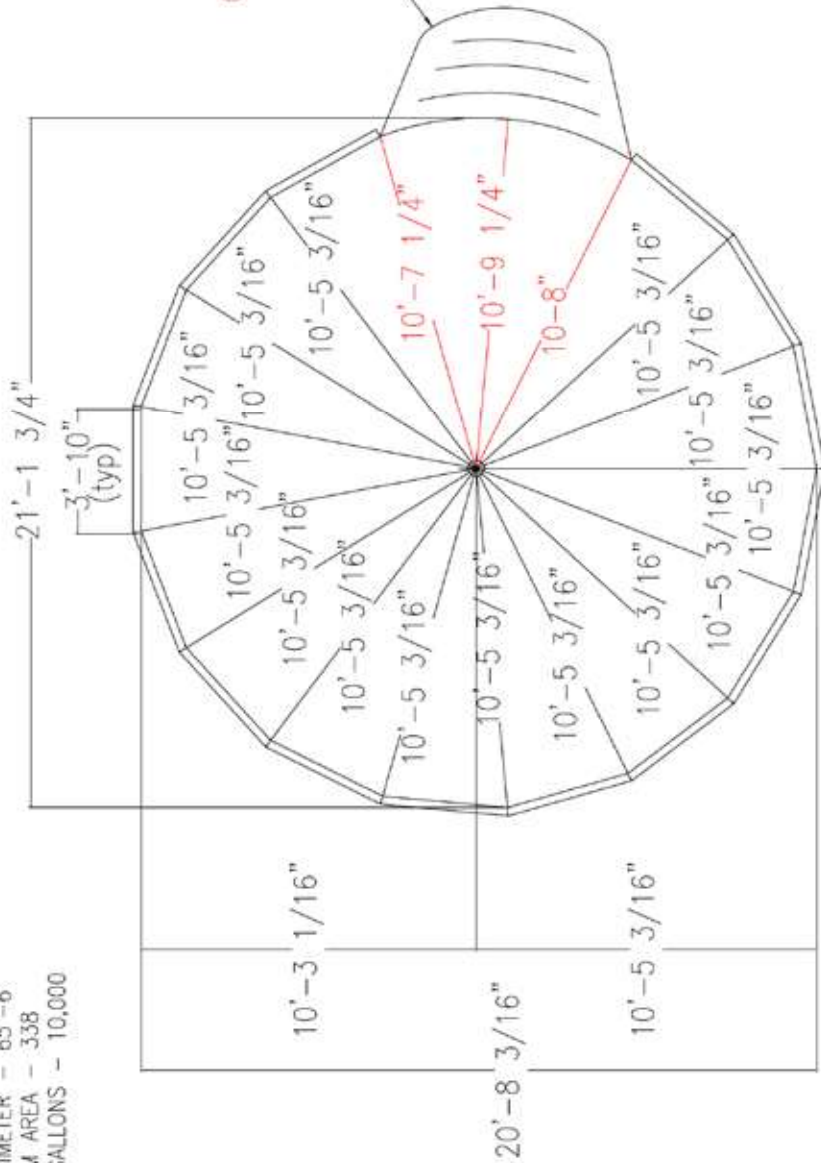
LNR PT# W2-21RS
 SNAP-IN CVR PT# W2-216
 SOLAR CVR PT# W20-82

DRAWING MUST BE APPROVED
 AND SIGNED BEFORE ORDER
 WILL BE PLACED FOR ALL
 SPECIAL ORDERS.

DEALER _____
 LINER CHOICE _____
 DATE _____
 CUSTOMER _____

TITLE	21' ROUND ULTIMATE	
DATE	11/6/20	TYPE 0
DWG. NO.	09-17578	SCALE NONE
DRW. BY	J.LANDES	

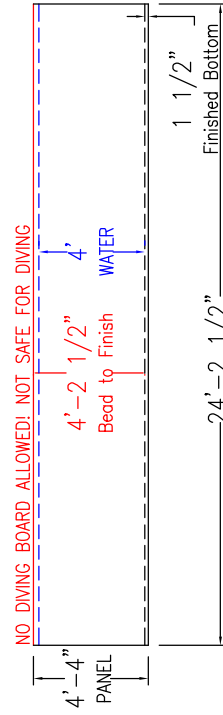
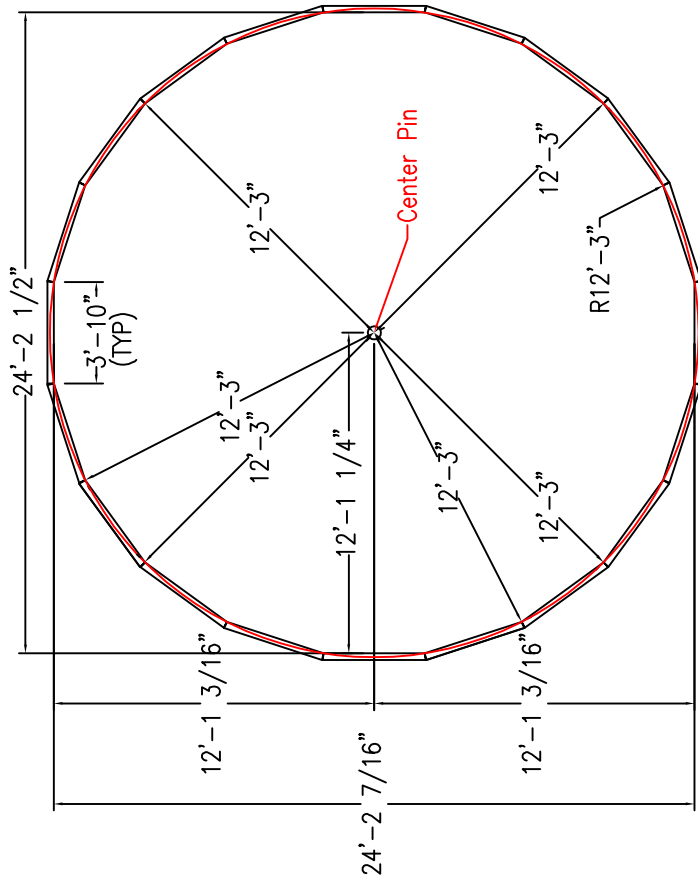
©ALL RIGHTS RESERVED



NOTES:

1. ALL PANELS are 14 gauge, Powder-Coated Steel
2. Pool Walls should always be installed on virgin soil or compacted base material.
3. Buttresses are located at each joint along each side wall.
4. **No Diving Board allowed! NOT Safe for diving!**
5. IF USING BENDABLE BULLNOSE COPING ADD 3-1/8" TO DIG DEPTH. BEAD TO FINISH WILL STAY THE SAME.
6. INSTALLATION TO BE IN ACCORDANCE WITH FOX POOL RECOMMENDATIONS

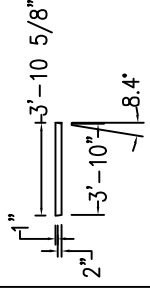
TRUE PERIMETER - 76'-8"
 SQFT SWIM AREA - 464
 APPROX GALLONS - 13,800



NOTES;

1. ALL PANELS are 14 gauge, Powder-Coated Steel
2. Pool Walls should always be installed on virgin soil or compacted base material.
3. Buttresses are located at each joint along each side wall.
4. **No Diving Board allowed! NOT Safe for diving!**
5. IF USING BENDABLE BULLNOSE COPING ADD 3-1/8" TO DIG DEPTH. BEAD TO FINISH WILL STAY THE SAME.
6. INSTALLATION TO BE IN ACCORDANCE WITH FOX POOL RECOMMENDATIONS

TOP VIEW FORMED



LNR PT# W2-124R
 SNAP-IN CVR PT# W2-224
 SOLAR CVR PT# W20-83

DRAWING MUST BE APPROVED
 AND SIGNED BEFORE ORDER
 WILL BE PLACED FOR ALL
 SPECIAL ORDERS.

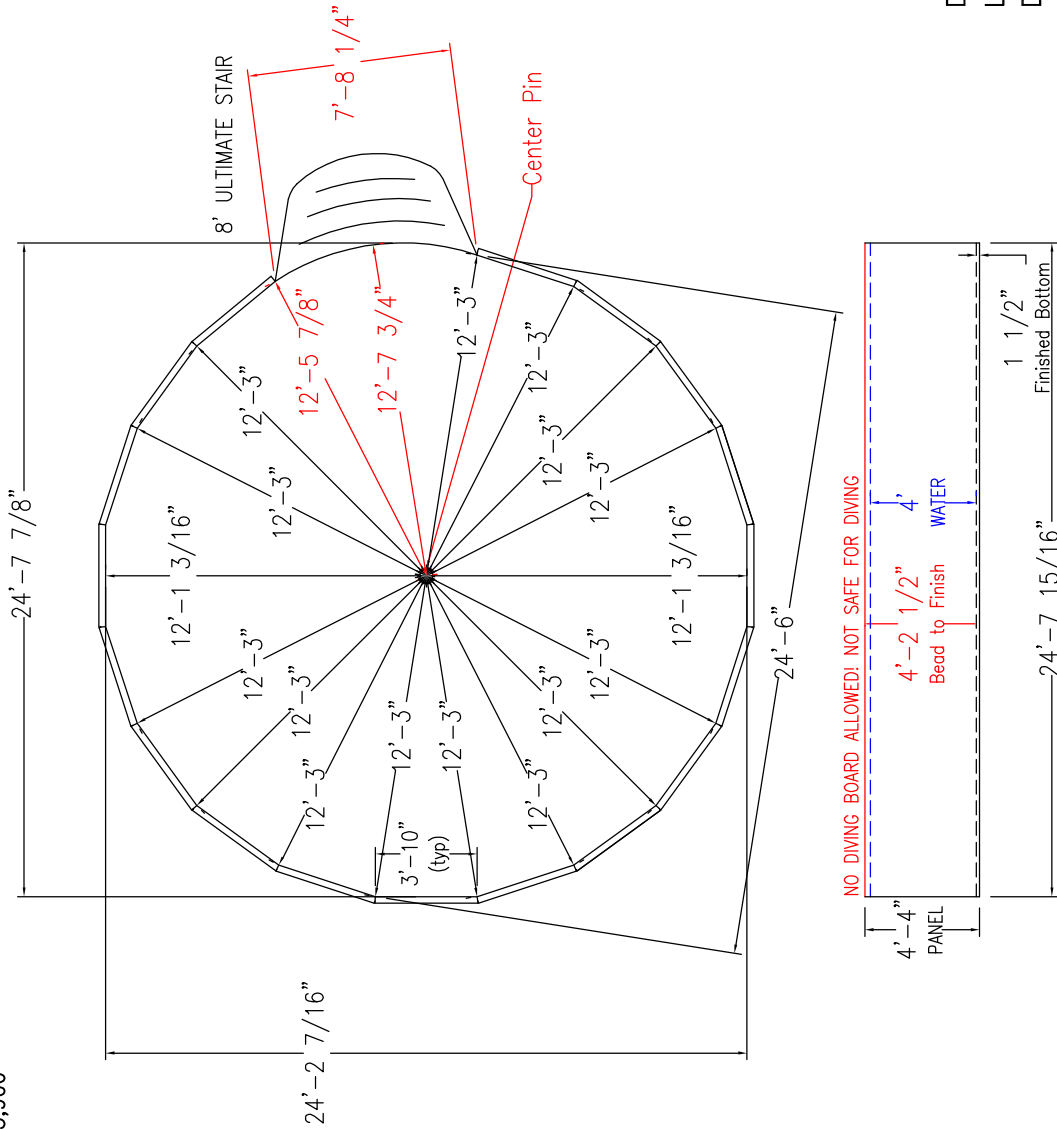
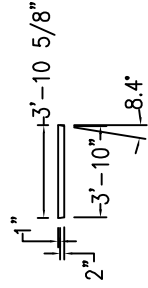
DEALER _____
 LINER CHOICE _____
 DATE _____
 CUSTOMER _____

TITLE	24' ROUND ULTIMATE		
DATE	2/10/14	TYPE	0
DWG. NO.	02-1233	SCALE	NONE
DRW. BY.	J.LANDES		

©ALL RIGHTS RESERVED

TRUE PERIMETER - 77'-0"
 SQFT SWIM AREA - 468
 APPROX GALLONS - 13,900

TOP VIEW FORMED



LNR PT# W2-24RS
 SNAP-IN CVR PT# W2-224
 SOLAR CVR PT# W20-83

DRAWING MUST BE APPROVED
 AND SIGNED BEFORE ORDER
 WILL BE PLACED FOR ALL
 SPECIAL ORDERS.

DEALER _____
 LINER CHOICE _____
 DATE _____
 CUSTOMER _____

TITLE	24' ROUND ULTIMATE	
DATE	8/17/20	TYPE 0
FIG. NO.	09-15386	SCALE NONE
DRW. BY.	J.LANDES	

- NOTES;
1. ALL PANELS are 14 gauge, Powder-Coated Steel
 2. Pool Walls should always be installed on virgin soil or compacted base material.
 3. Buttresses are located at each joint along each side wall.
 4. **No Diving Board allowed! NOT Safe for diving!**
 5. IF USING BENDABLE BULLNOSE COPING ADD 3-1/8" TO DIG DEPTH. BEAD TO FINISH WILL STAY THE SAME.
 6. INSTALLATION TO BE IN ACCORDANCE WITH FOX POOL RECOMMENDATIONS

©ALL RIGHTS RESERVED

**PLEASE VISIT WWW.CARDINALSYSTEMSINC.COM
FOR WARRANTY INFORMATION AND SUBMISSION,
OR CONTACT THE CUSTOMER SERVICE NUMBER BELOW.**



QUALITY. COMMITMENT. FAMILY.

p: 570.385.4733 | customerservice@cardinalsystemsinc.com | cardinalsystemsinc.com

250 Route 61 South, Schuylkill Haven, PA 17972

CS-ULTMANUAL © 2025 Cardinal Systems, Inc.