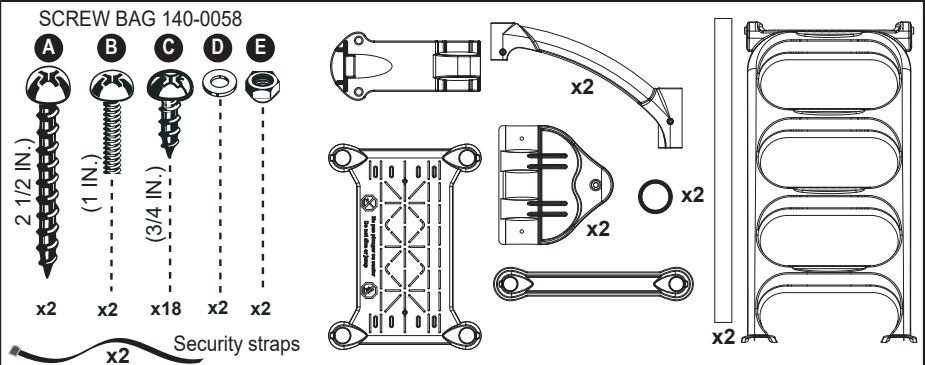


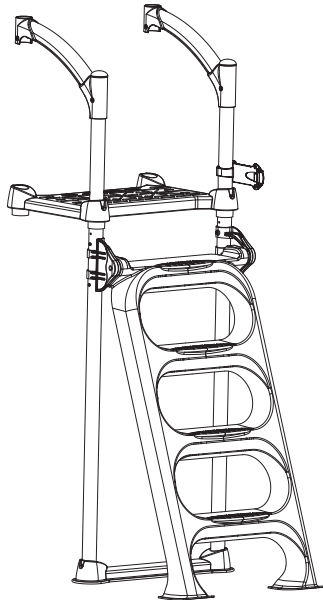
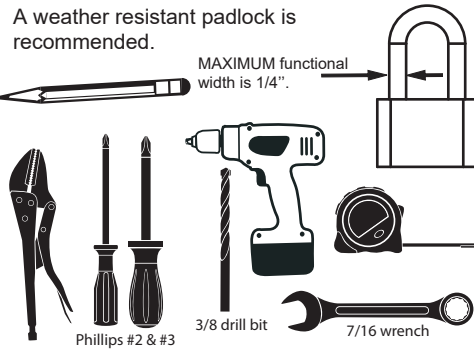
# CLASSIC LADDER 6003

## Contents of Ladder box SKU # 6003



## Tools required

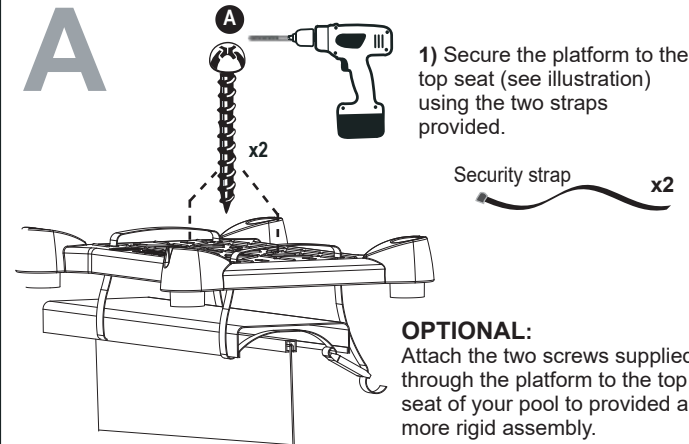
(not included)



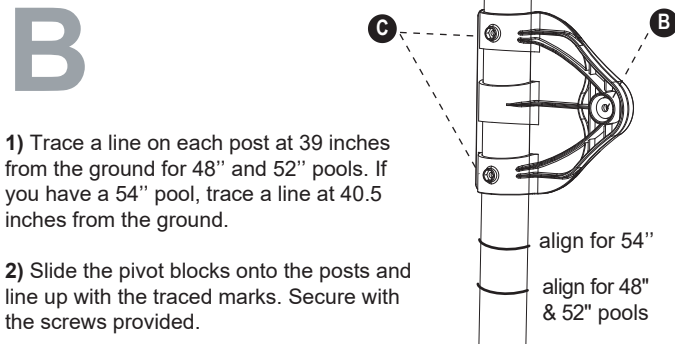
## ! WARNING

- ▶ Install the step on a flat surface.
- ▶ Do not jump or dive from the ladder.
- ▶ Remove the step from water when temperatures drop below freezing.
- ▶ In winter, the step should be stored in an area protected from snow.
- ▶ Never lift the step by its handrails.
- ▶ Use BATTERY operated tools to avoid electric shock near water.
- ▶ Ensure no corrosive materials are added to the step or hardware kit.
- ▶ The step must be installed per manufacturer's instructions.
- ▶ File off all stripped or sharp edges before assembly to avoid injuries and liner damage.
- ▶ The manufacturer is not responsible for damages or injuries caused by improper installation or use of product.
- ▶ To ease the installation of handrails and bolts, use a screwdriver to line up the holes.

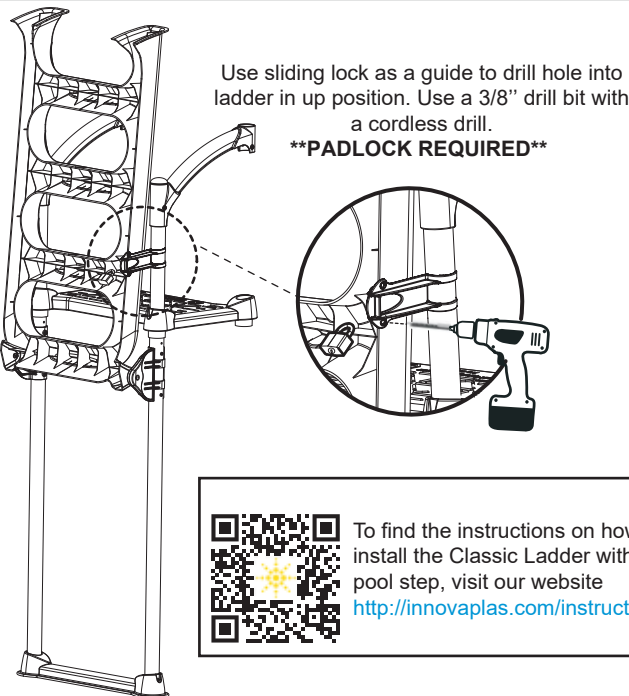
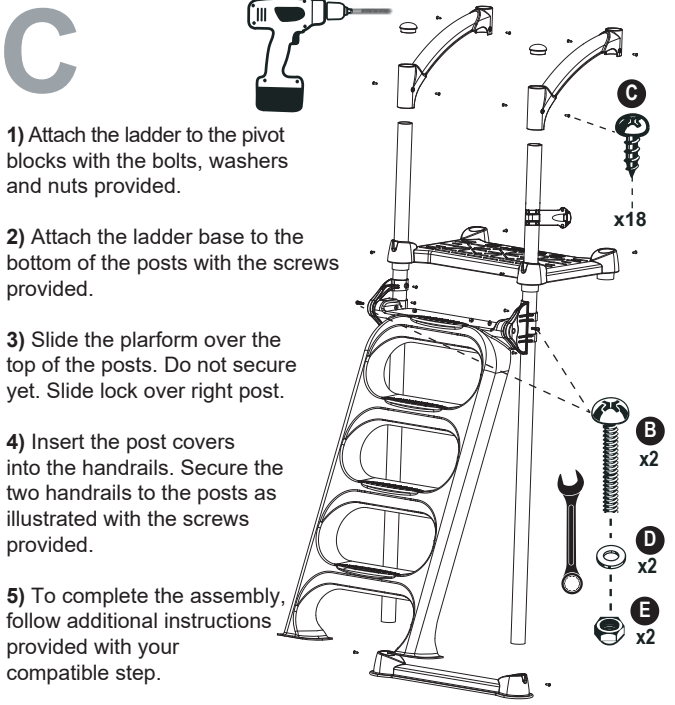
### A



### B



### C



To find the instructions on how to install the Classic Ladder with your pool step, visit our website <http://innovaplas.com/instructions>

## MANUFACTURER WARRANTY

1 year on ladder.  
1 year on hardware.



2257 route 139  
Drummondville, Québec  
J2A 2G2

WWW.INNOVAPLAS.COM

REV. 02/12/2020

PN:

PG:1