

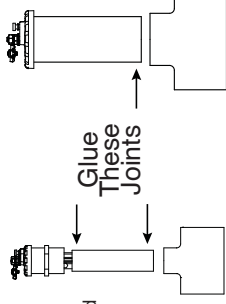


In-Line Anode Installation Guide for TN-IL and TN-IL-20



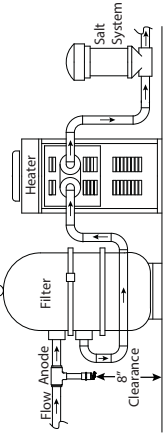
Step 1) Components

Remove TechNode components from package and separate the clear pipe from all PVC slip joints. The clear anode tube is fabricated from PVC material. Using PVC primer and cement, glue the clear anode housing (14) as illustrated. TechNode In-line fits both 1-1/2" and 2" plumbing.



Glue These Joints

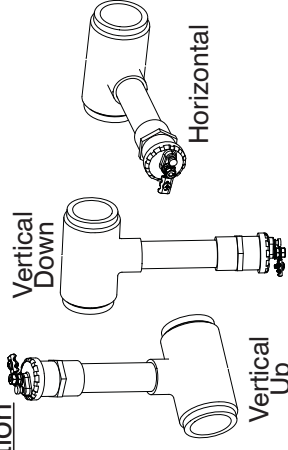
Step 2) Where to Install



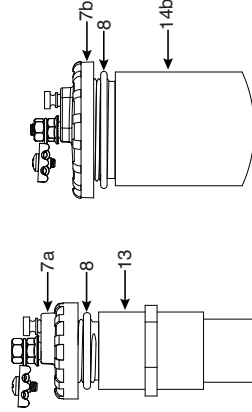
Decide where to install the In-Line anode in the pool plumbing. For proper anode function, the anode must be installed up-stream of the pool heater and salt system generator. Clearance: Make sure to provide adequate clearance for removing the zinc from the plumbing.

Step 3) Installation Orientation

The anode can be installed vertical up, vertical down or in a horizontal position. Trapped air in the anode chamber will reduce the effective action of the anode. Air can be bled out using the anode vent (3). Mounting the anode vertical down or horizontal will insure that air will never be trapped in the anode tube (recommended). Glue the anode tee (16) into the pool plumbing using PVC primer and cements. Reducer bushings (15) are supplied for 1-1/2" pipe.



Step 4) Cap Installation



Apply O-ring lubricant (not supplied) to the large O-ring (8) on the TechNode Cap (7a or 7b). Thread the Anode Cap into the threaded end of the Female PVC Adapter (13) or the 2" Clear Anode Housing (14b) and hand tighten securely approximately 1/6 turn after the O-ring contacts the housing.

Step 5) Connect the Anode

How to use In-Line Anodes

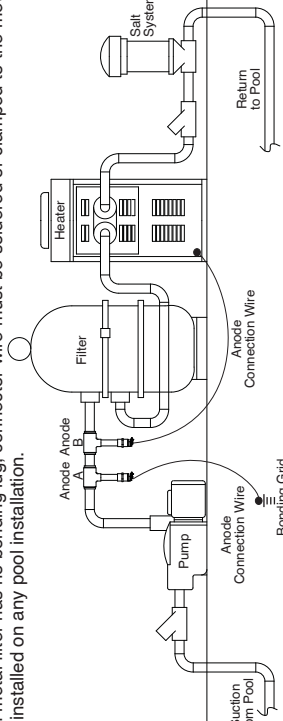
- Anode "A" - General corrosion protection. Help prevent plaster discoloration, black wall stains and metal deterioration in pool lights and rails.
- Anode "B" - Helps prevent corrosion failures. Connect the anode directly to heater or stainless steel filter. Always install separate anodes for metal filter and heater. If metal filter has no bonding lug, connector wire must be soldered or clamped to the metal filter. Multiple anodes can be installed on any pool installation.

Anode A - Installation

General corrosion protection - Connect the anode connector wire (18) to the anode wire lug (2). Connect the other end of the wire to the pool bonding grid using the split bolt connector (2) supplied. This method of anode connection will help prevent plaster discoloration, black wall stains and metal deterioration in pool lights and rails.

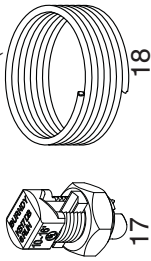
Anode B - Installation

Heaters and Metal Filters - Connect the anode connector wire (18) to the anode wire lug (2). Connect the other end of the wire to the heater or filter bonding lug.

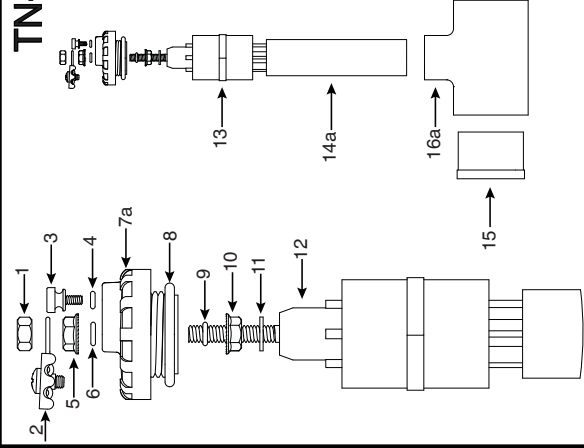


IMPORTANT
Apply Installation Date Sticker to Anode
Replace the anode every 2 years

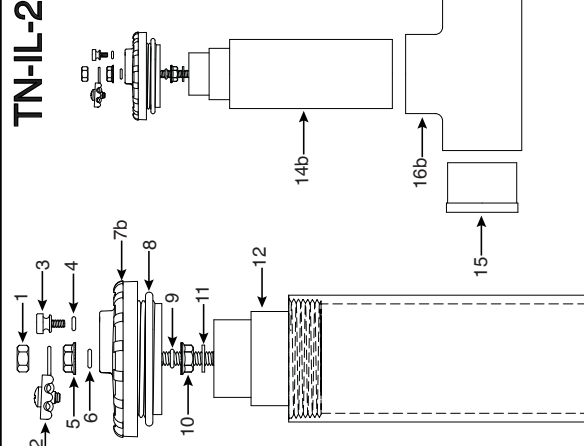
- Nut
- Anode Wire Lug
- Vent Thumb Screw
- Small O-Ring
- Flanged Nut
- Medium O-Ring (use with TN-IL)
- 7a. TechNode Cap (use with TN-IL)
- 7b. TechNode Cap (use with TN-IL-20)
- Large O-Ring
- Medium O-Ring
- Washer
- Zinc Anode
- Female PVC Adapter (use with TN-IL)
- 14a. Clear Anode Housing (use with TN-IL)
- 14b. Clear Anode Housing (use with TN-IL-20)
- PVC Bushing
- 16a. PVC Tee (use with TN-IL)
- 16b. PVC Tee (use with TN-IL-20)
- Split Bolt
- Anode Connection Wire (Green)



TN-IL



TN-IL-20



REPLACEMENT PARTS

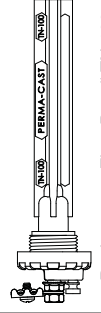
O-Ring Replacement Part #
Medium O-Ring (6) (9)
TN-OR-10719

Small O-Ring (4)
TN-OR-10716

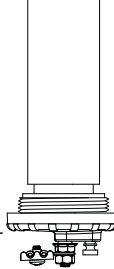
TN-IL / TN-100 Large O-ring (8)
TN-OR-10892

TN-IL-20 / TN-200 Large O-ring (8)
TN-OR-10900

Brass Vent Plug (30)
TN-VP



Replacement Zinc: Part # TN-100



Replacement Zinc: Part # TN-200

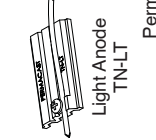
TechNode Component Anodes



Ladder Anode
TN-LD



Utility Anode
TN-SK



Light Anode
TN-LT



Perma-Cast Co. Pueblo, CO
www.permacastonline.com
Call 800-748-2770