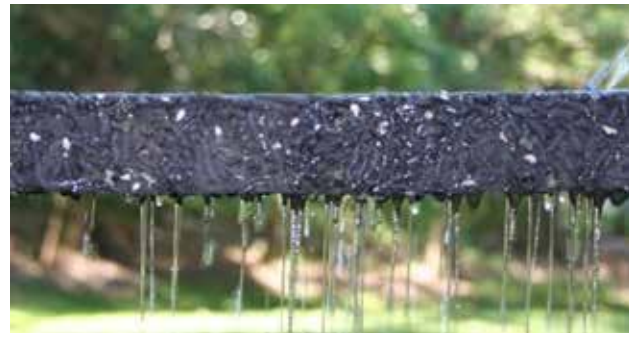


HydroBlox



HydroBlox HydroPlanks are a permanent solution superior to traditional drainage. The product's high-void structure allows for a drainage capacity and structural stability greater than stone or pipe. Fast and easy to install, HydroPlanks redirect stormwater in any direction, without clogging. When installed, there is no need to connect the HydroPlanks, as the water moves from one plank to the next through the material. Simply install them so they are touching each other.

HydroPlanks are 9" wide, 40" long and 2" thick. A 3" wide by 12" deep trench is dug with a ground saw or ditch witch. Lay the planks in the trench, cover up with the removed soil. In addition to the 40" length, an 8-foot-long plank is also manufactured. Typically, these are used in commercial applications. HydroPlanks are one-man operable and save the customer time and material costs.

Stormwater Systems

HydroBlox Stormwater Systems are a superior alternative to typical drywells or trenches. No stone is required. Excavation requirements are significantly scaled down and the installation cost is reduced by over 60%! Due to its porous, high-void composition it is an efficient non-compressible product that will release stormwater into the water table at the same rate as undeveloped soil. Sizing the HydroBlox Stormwater System is simply a matter of adding additional boxes allowing for an unlimited size of stormwater applications. A 100-square foot trench is reduced to a 40-square foot HydroBlox box that is installed without aggregate or geotextile. The system meets NPDES & MS4 requirements.



Transition Box

These boxes are used to connect HydroBlox to existing solid pipe systems.



BEFORE



AFTER

HydroBlox
Technologies, Inc.

office: 724 719 2660

email: info@hydroblox.com

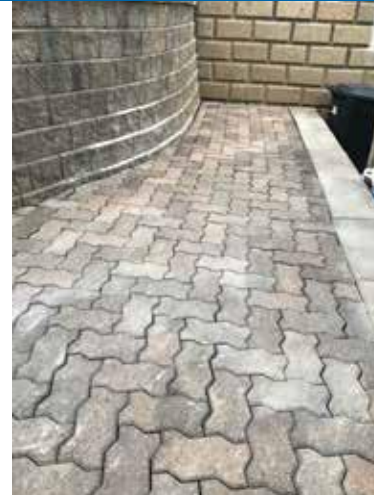
web: hydroblox.com

 [@hydroblox](https://www.facebook.com/hydroblox)



HydroBlox provides a high-load strength, puncture-resistant layer for retaining walls that can improve drainage, stabilization, and stormwater management. Compatible with either hard or soft landscaping, HydroPlanks quickly pull water out of the retaining walls and keep the structure from becoming too saturated and collapsing. Lay out the planks end to end, and side by side, and place the backfill directly onto the HydroPlanks.

Here are two excellent ways HydroBlox can be used for hardscapes. It can be placed behind the wall to divert water. It can also be used as the bedding and drainage surface for the paving stones.



Hydr  **Blox**

HydroBlox
Technologies, Inc.

office: 724 719 2660

email: info@hydroblox.com

web: hydroblox.com

 [@hydroblox](https://www.facebook.com/hydroblox)