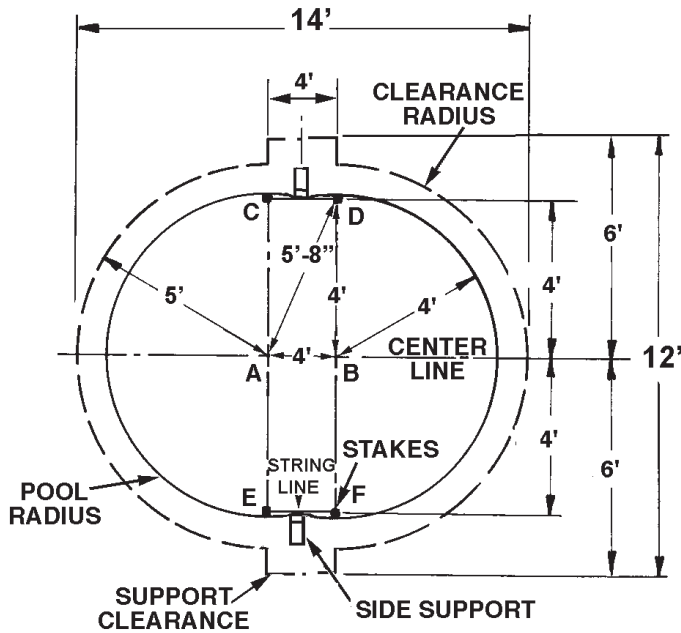


8'x12' OVAL POOL 8" SERIES ASSEMBLY GUIDE SUPPLEMENT

THIS SHEET IS USED IN CONJUNCTION WITH THE ASSEMBLY GUIDE BOOKLET. PLEASE REFER TO THE FOLLOWING INFORMATION BELOW WHEN LAYING OUT THE POOL, LAYING OUT THE BOTTOM RAILS AND ATTACHING THE TOP RAILS. REFER TO THE ASSEMBLY GUIDE BOOKLET FOR ALL OTHER INFORMATION REGARDING THE COMPLETE POOL ASSEMBLY AND IMPORTANT SAFETY INFORMATION.

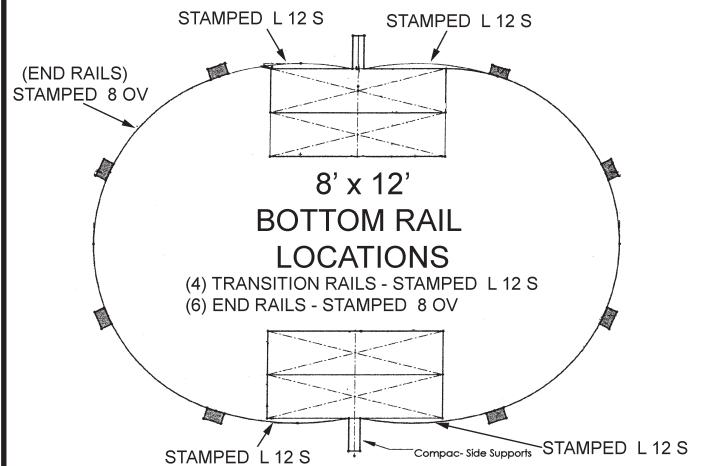
POOL LAYOUT

8' x 12'



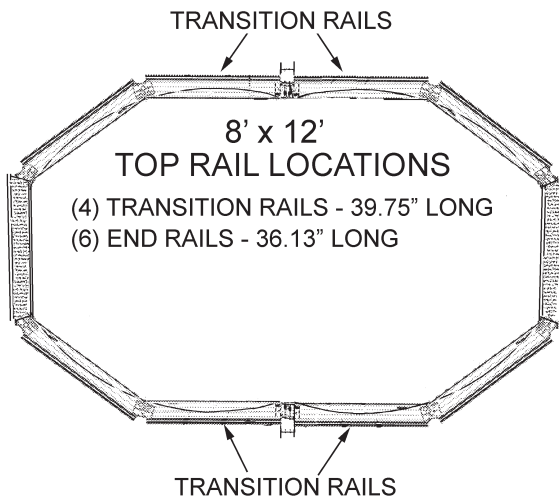
BOTTOM RAIL LOCATIONS

8' x 12'



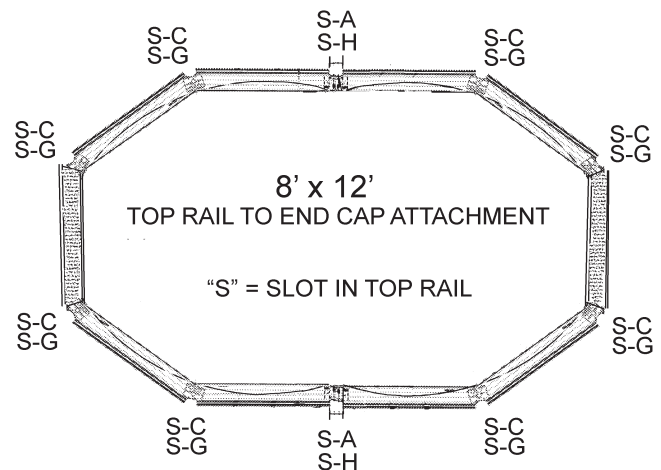
Place bottom rails stamped "L 12 S" on the outside of the side verticals. Place bottom rails stamped "8 OV" on the ends of the pool.

TOP RAIL LOCATIONS



Refer to the diagram above for proper top rail placement.

TOP RAIL ATTACHMENT



Attach the top rails to the vertical end cap using the hole patterns shown above using #10 x 1/2" screws. Example: On the ends of the pool, attach top rail hole "SLOT" to vertical cap hole "C" and top rail hole "SLOT" to vertical cap hole "G".