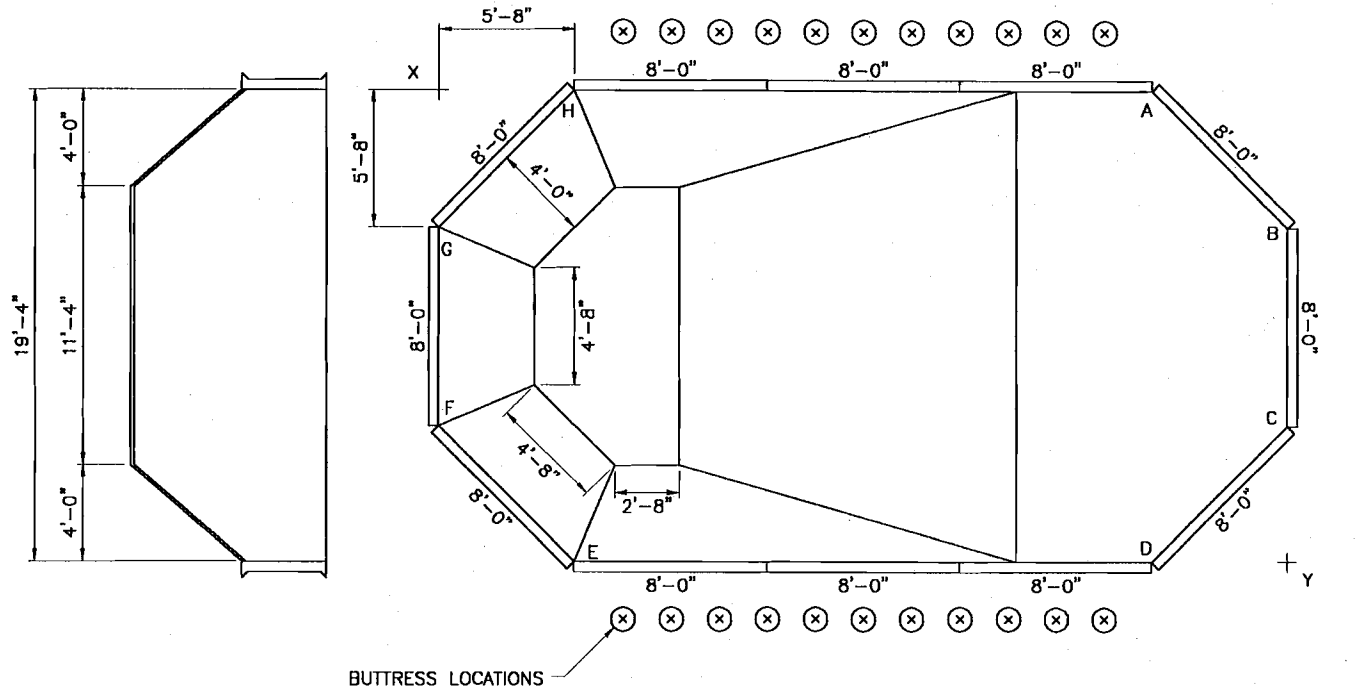


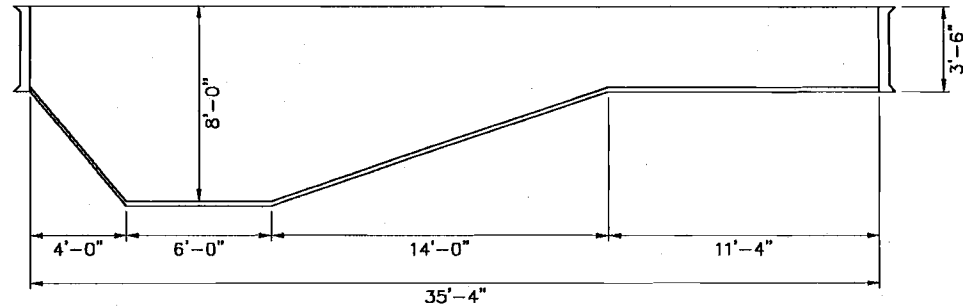
BILL OF MATERIALS

QTY.	DESCRIPTION	CODE
1	8'-0" HAYWARD SKIMMER	CPN-S096SH
9	8'-0" PLAIN PANEL	CPN-S096
2	8'-0" HAYWARD RETURN	CPN-S096RH
22	BUTTRESS	CPC-BUT
22	BUTTRESS HARDWARE	CPC-HDW-1234L
8	45° ANGLE BRACE, 12GA	CPC-AB45
1	45° BENT HARDWARE (72)	CPC-HDW-PK45
2	STRAIGHT HARDWARE (30)	IPC-HDWSTRT30
3	STRAIGHT HARDWARE (40)	IPC-HDWSTRT40

19 X 35 EMERALD



A to C	14'-9"
A to D	19'-4"
A to E	30'-10"
A to F	32'-8"
A to G	30'-2"
X to Y	40'-3"



WARNING:

JUMPING OR DIVING IN ON-GROUND POOLS CAN CAUSE PERMANENT INJURY OR DEATH.

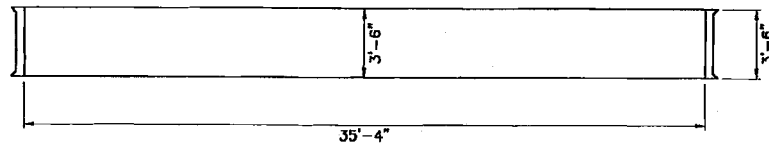
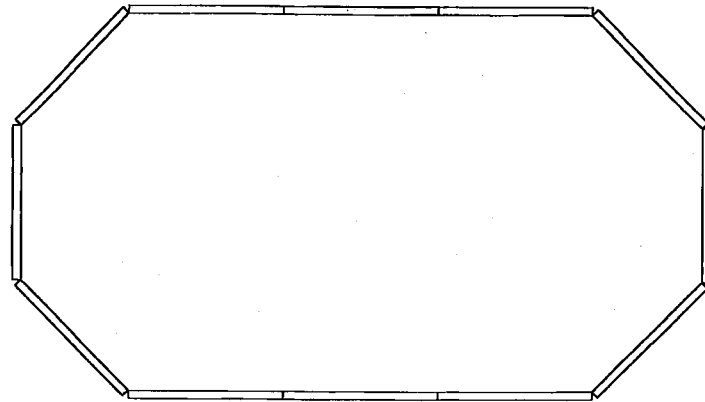
NOTE:

EXPANDABLE BOTTOMS ARE BOWLED OR DISHED; THE MEASUREMENTS SUPPLIED ARE GUIDES RATHER THAN EXACT MEASUREMENTS.

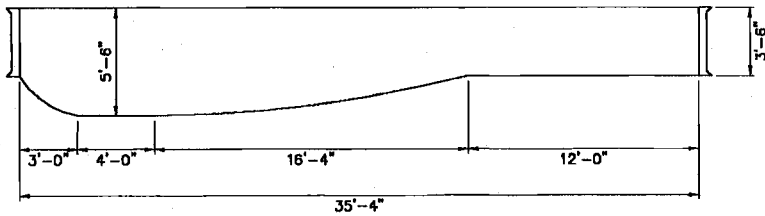
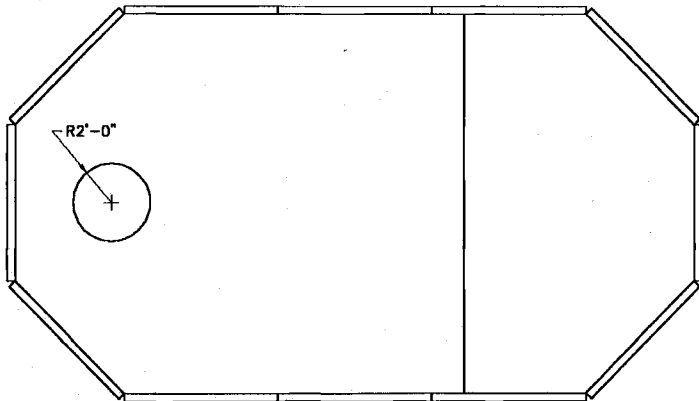
REVISIONS			CHAMPLAIN STEEL
CHG.	DATE	BY	
			FULL 8'-0" HOPPER
VOLUME: 17308 IMP GAL			DATE: JAN 01, 2002
AREA: 618.0 SQ. FT.			O\N: EM1935XS_02
PERIMETER: 96'-0"			SCALE: 1/8" = 1'-0"

OPTIONAL BOTTOM CONFIGURATIONS

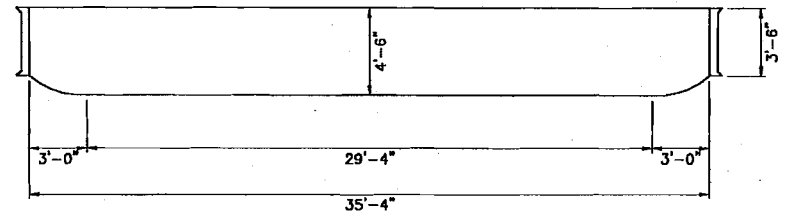
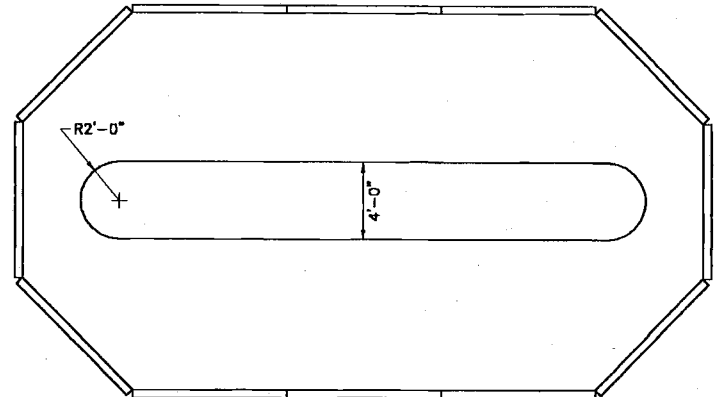
19 X 35 EMERALD



FLAT BOTTOM
VOLUME: 10907 IMP GAL



PARTIAL 5' EXPANDABLE BOTTOM
VOLUME: 13066 IMP GAL



FULL 5' EXPANDABLE BOTTOM
VOLUME: 13048 IMP GAL

O/N: EM1935XD_02